



TOWN OF ANDOVER

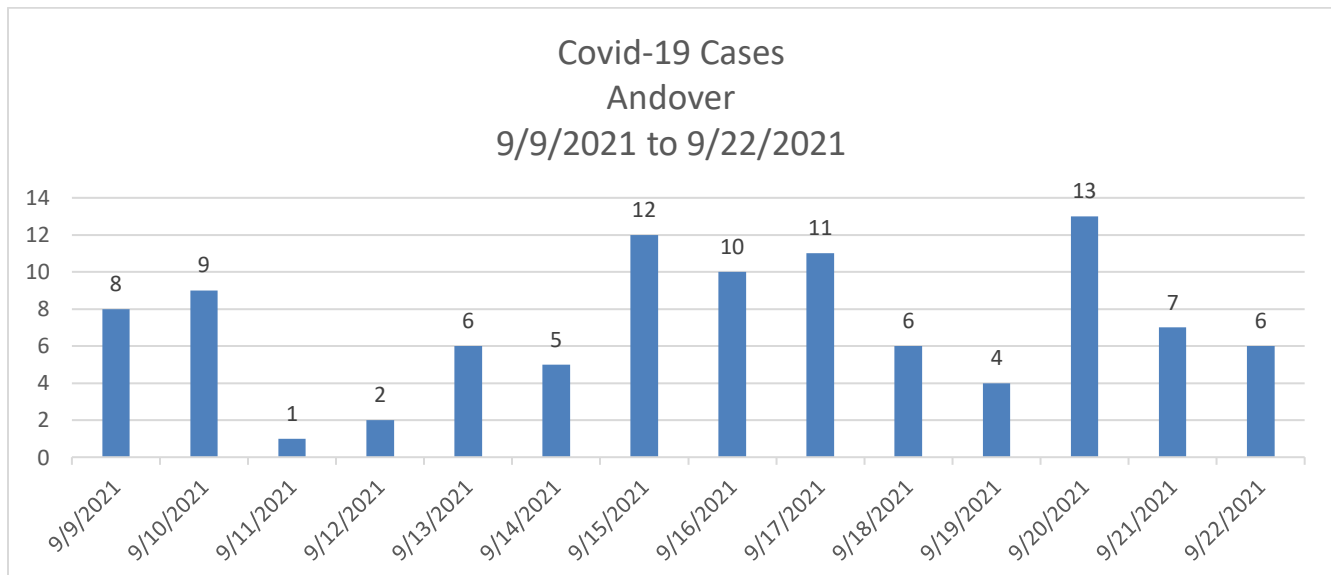
Town Offices
36 Bartlet Street
Andover, MA 01810
(978) 623-8200
www.andoverma.gov

ANDOVER COVID-19 CASE DATA **REPORT DATE: SEPTEMBER 24, 2021**

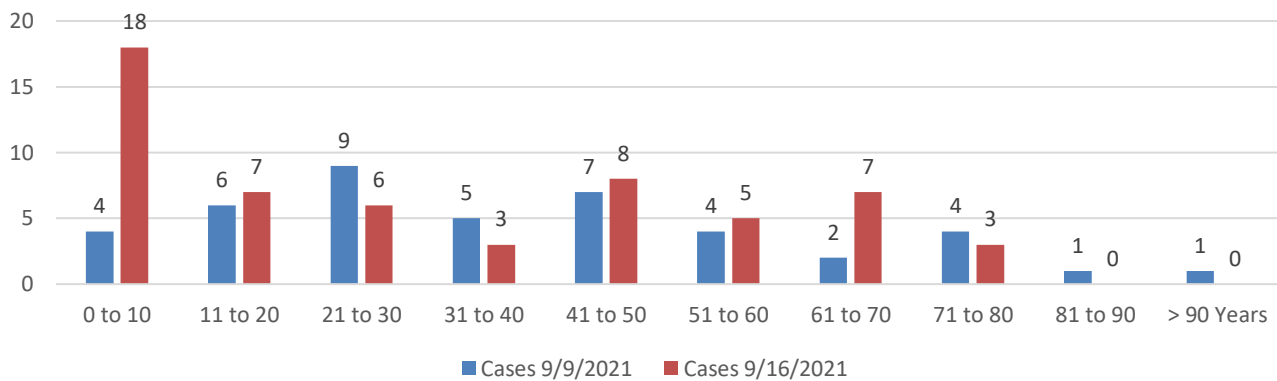
Due to the increase in positive Covid-19 Cases in both the country and the Commonwealth, the town has been receiving questions about cases in Andover. This data is being supplied to help residents and businesses make informed decisions about how they protect those around them.

We take this opportunity to caution the public that the Covid-19 Pandemic is not yet over, and that Public Health Interventions are still required while we wait for more people to become eligible for vaccinations. Roughly 29% of our population is unvaccinated, with the majority of those people under the age of 12 years, and therefore unable to be vaccinated at this time.

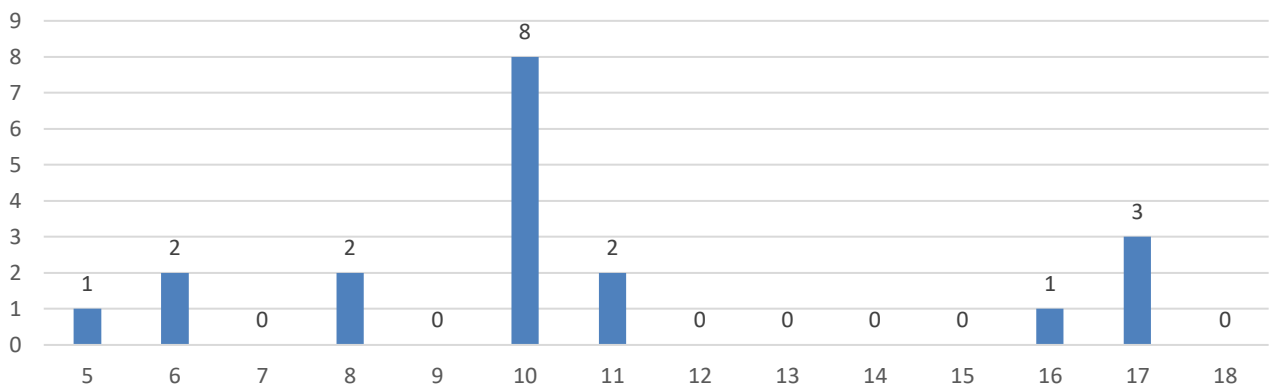
The early interventions were meant to decrease spread while a vaccine was developed, and to keep the hospital systems from being overwhelmed by Covid-19 patients. We have managed to do that because our residents look out for each other, and are altruistic in wearing masks and becoming vaccinated. **HOWEVER, IT IS NOT YET TIME TO LET OUR GUARD DOWN.** We are hopeful that the Delta Variant will run its course soon, and that younger children will be cleared for vaccination soon. Until then, expect that we will see transmission in the community, and especially within households.



Covid-19 Cases by Age Group
Andover
9/9/2021 to 9/22/2021



Covid-19 Cases by Age (Years)
Andover
9/9/2021 to 9/22/2021



This data is for September 9 to September 15, 2021:

Age Range (Years)	# of Positive Cases	# Vaccinated	# Not Vaccinated
0 to 10	4	0	4
11 to 20	6	4	2
21 to 30	7	3	4
31 to 40	4	3	1
41 to 50	7	6	1
51 to 60	4	2	2
61 to 70	4	3	1
71 to 80	2	2	0
81 to 90	1	0	1
>90 Years	1	1	0
Total	40	24	16

This data is for September 16 to September 22, 2021:

Age Range (Years)	# of Positive Cases	# Vaccinated	# Not Vaccinated
0 to 10	19	0	19
11 to 20	5	1	4
21 to 30	5	2	3
31 to 40	4	2	2
41 to 50	9	4	5
51 to 60	5	4	1
61 to 70	7	4	3
71 to 80	3	3	0
81 to 90	0	0	0
>90 Years	0	0	0
Total	57	20	37

Age Group	Cases 8/26/2021	Cases 9/2/2021	Cases 9/9/2021	Cases 9/16/2021
0 to 10	8	11	4	19
11 to 20	5	5	6	5
21 to 30	5	12	7	5
31 to 40	4	4	4	4
41 to 50	7	11	7	9
51 to 60	5	8	4	5
61 to 70	1	5	4	7
71 to 80	3	3	2	3
81 to 90	1	1	1	0
> 90 Years	0	0	1	0
Total	39	60	40	57

Items to Note:

- This Week’s 7 day count reveals the importance of immunization. 19 of the 57 cases (33%) are in persons under the age of 12 years, and therefore are not eligible for vaccination.
- We are noting increases in cases in school settings in ages that are not yet eligible for vaccination. We are working closely with the School department.
- Several of the cases in persons under 12 years are associated with household spread.
- One case this week is associated with Merrimack College; there was 1 case last week.
- Cases are occurring in all age groups.
- We are seeing evidence of household spread; 43% of the cases in the last 2 weeks come from 16 households. In the past 7 day period, 23 cases are associated with 9 households.
- Essex County has been designated by the CDC as an area of high transmission.

Vaccination Data as of 9/23/2021:

Age Group	Population	Proportion of town population	Individuals with at least one dose	Individuals with at least one dose per capita	Fully vaccinated individuals	Fully vaccinated individuals per capita
12-15 Years	2,155	6%	2,041	95%	1,796	83%
16-19 Years	2,010	6%	2,229	>95%	2,086	>95%
20-29 Years	3,729	10%	2,863	77%	2,687	72%
30-49 Years	8,928	25%	7,189	81%	6,728	75%
50-64 Years	7,988	22%	7,382	92%	6,999	88%
65-74 Years	3,432	10%	3,158	92%	3,000	87%
75+ Years	2,607	7%	2,376	91%	2,227	85%
Total	36,064	100%	27,238	76%	25,523	71%

- Qualifications: WE KNOW THAT SOME OF THESE NUMBERS CONFLICT WITH EACH OTHER; THIS IS MEANT TO SERVE AS A LENSE TO WHAT IS OCCURRING IN THE COMMUNITY. This data is fluid and may not match numbers presented in the state’s weekly community data. The state positive case data may be found here: <https://www.mass.gov/info-details/covid-19-response-reporting>.
- State-wide vaccination data can be found here: <https://www.mass.gov/info-details/massachusetts-covid-19-vaccination-data-and-updates>
- The State Report on cases in vaccinated persons can be found here: <https://www.mass.gov/doc/weekly-report-covid-19-cases-in-vaccinated-individuals-september-21-2021/download>

Precautions to Take:

- If you have not been vaccinated, or have not completed your vaccination series, **do so now**. To find a vaccination clinic, click here: <https://www.mass.gov/covid-19-vaccine>.
- If you are unvaccinated, you should wear a face covering inside public spaces and elsewhere, where crowds might be located.
- Fully vaccinated persons should consider wearing a face covering when entering crowded indoor spaces.
- If you have been identified as a close contact of a positive person, consider being tested no sooner than 5 days after you last exposure to that person. To find a test site, visit <https://www.mass.gov/info-details/find-a-covid-19-test>.
- The Commonwealth has created an anonymous alert system to notify you if you may have been close to a positive person; you must sign up to be part of this system. Visit here for details: <https://member.everbridge.net/index/406686158291020/#/signup>.

Face Covering Guidance:

- If you are unvaccinated, you should wear a mask.
- On Public Transportation and Ride Shares, all persons **MUST** wear face coverings.
- You **MUST** wear a face covering inside a medical facility and congregate care facilities.
- You **MUST** wear a face covering inside a public school building.
- You **MUST** wear a face covering inside The Robb Center, Memorial Hall Library, and the Cormier Youth Center.
- You **MUST** wear a face covering inside any municipal building, and as all municipal board and committee meetings.
- If you are immunocompromised, even if vaccinated, you should wear a mask in crowded areas.
- If you reside with a person who is immunocompromised, you should wear a mask in crowded areas.
- If you are at increased risk for severe disease because of age or weakened immune system, you should wear a mask indoors when not at home.