



# TOWN OF ANDOVER

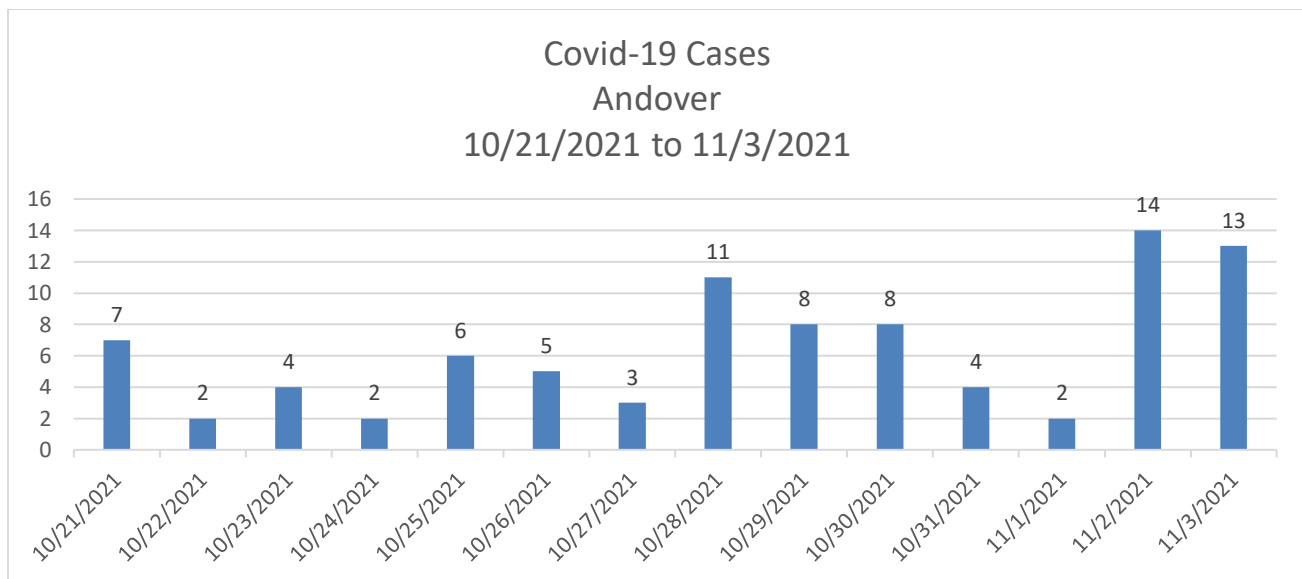
Town Offices  
36 Bartlet Street  
Andover, MA 01810  
(978) 623-8200  
www.andoverma.gov

## ANDOVER COVID-19 CASE DATA REPORT DATE: November 5, 2021

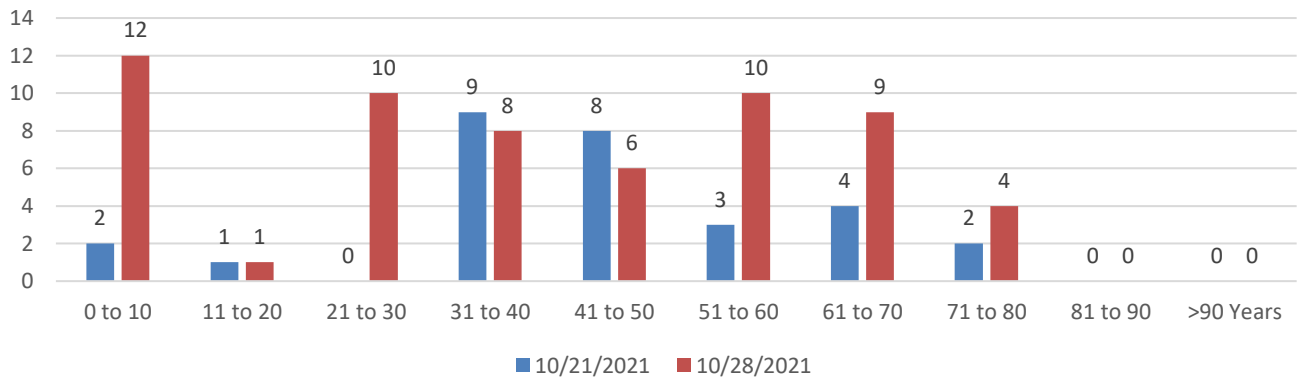
This data is being supplied to help residents and businesses make informed decisions about Covid-19 , and how they protect those around them.

We take this opportunity to caution the public that the Covid-19 Pandemic is not yet over, and that Public Health Interventions are still required while we wait for more people to become eligible for vaccinations. Roughly 28% of our population is unvaccinated, with the majority of those people under the age of 12 years, and therefore unable to be vaccinated at this time.

The early interventions were meant to decrease spread while a vaccine was developed, and to keep the hospital systems from being overwhelmed by Covid-19 patients. We have managed to do that because our residents look out for each other, and are altruistic in wearing masks and becoming vaccinated. **HOWEVER, IT IS NOT YET TIME TO LET OUR GUARD DOWN.** We are seeing the Delta Variant cases dropping, and anticipate that younger children will be cleared for vaccination soon. Until then, expect that we will see transmission in the community, and especially within households.



**Covid-19 Cases by Age Group & Week**  
**Andover**  
**10/21/2021 to 11/3/2021**



This data is for October 21 to October 27, 2021:

<b><u>Age Range (Years)</u></b>	<b><u># of Positive Cases</u></b>	<b><u># Vaccinated</u></b>	<b><u># Not Vaccinated</u></b>
0 to 10	2	0	2
11 to 20	1	1	0
21 to 30	0	0	0
31 to 40	7	5	2
41 to 50	8	7	1
51 to 60	3	2	1
61 to 70	4	3	1
71 to 80	2	0	2
81 to 90	0	0	0
>90 Years	0	0	0
<b>Total</b>	<b>27</b>	<b>18</b>	<b>9</b>

This data is for October 28 to November 3, 2021:

<b><u>Age Range (Years)</u></b>	<b><u># of Positive Cases</u></b>	<b><u># Vaccinated</u></b>	<b><u># Not Vaccinated</u></b>
0 to 10	12	0	12
11 to 20	1	0	1
21 to 30	10	9	1
31 to 40	8	6	2
41 to 50	6	4	2
51 to 60	11	7	4
61 to 70	9	7	2
71 to 80	4	2	2
81 to 90	0	0	0
>90 Years	0	0	0
<b>Total</b>	<b>61</b>	<b>35</b>	<b>26</b>

Age Group	Cases 10/7/2021	Cases 10/14/2021	Cases 10/21/2021	Cases 10/28/2021
0 to 10	4	2	2	12
11 to 20	3	2	1	1
21 to 30	2	4	0	10
31 to 40	1	3	7	8
41 to 50	2	1	8	6
51 to 60	9	5	3	11
61 to 70	3	3	4	9
71 to 80	1	0	2	4
81 to 90	1	1	0	0
> 90 Years	0	0	0	0
Total	26	21	27	61

**Items to Note:**

- 45 of the 89 cases in this two-week period occurred in 14 households.
- 4 of the 61 cases in the most recent week are from a single suite at Merrimack College.
- 7 of the 12 cases in the 0 to 10 year range during the most recent week are in 4 family units.
- Andover and its surrounding communities are seeing a new spike in cases; this spike is later than expected for a Columbus Day event, and too early to be tied to Halloween events.
- We believe that several of the cases in children under 11 years are associated with one or more events outside of the school setting.
- Persons aged 5 to 11 Years are now eligible for the Covid-19 Vaccine. We anticipate a strong response to this event, and hope to see a decrease in cases associated with this age group by the start of January.
- In looking at the raw numbers, one should not assume that this variant is disproportionately affecting vaccinated persons; it is expected that since Andover's vaccination rate is 72%, that we could see more vaccinated persons testing positive.

**Andover Vaccination Data: 11/4/2021**

Age Group	Population	Individuals with at least one dose	Individuals with at least one dose per capita	Fully vaccinated individuals	Fully vaccinated individuals per capita
12-15 Years	2,155	2,080	>95%	1,839	85%
16-19 Years	2,010	2,245	>95%	2,119	>95%
20-29 Years	3,729	2,955	79%	2,751	74%
30-49 Years	8,928	7,474	84%	6,864	77%
50-64 Years	7,988	7,666	>95%	7,100	89%
65-74 Years	3,432	3,435	>95%	3,076	90%
75+ Years	2,607	2,487	>95%	2,222	85%
Total	36,064	28,342	79%	25,971	72%

- Qualifications: WE KNOW THAT SOME OF THESE NUMBERS CONFLICT WITH EACH OTHER; THIS IS MEANT TO SERVE AS A LENSE TO WHAT IS OCCURRING IN THE COMMUNITY. This data is fluid and may not match numbers presented in the state's weekly community data. The state positive case data may be found here: <https://www.mass.gov/info-details/covid-19-response-reporting>.
- In the 16 to 19 year range, there are more persons vaccinated than listed in the population. Population numbers are estimates created by the Commonwealth; the number vaccinated is taken from immunization reports.
- State-wide vaccination data can be found here: <https://www.mass.gov/info-details/massachusetts-covid-19-vaccination-data-and-updates>
- The State Report on cases in vaccinated persons can be found here: <https://www.mass.gov/info-details/massachusetts-covid-19-vaccination-data-and-updates#weekly-covid-19-municipality-vaccination-data->

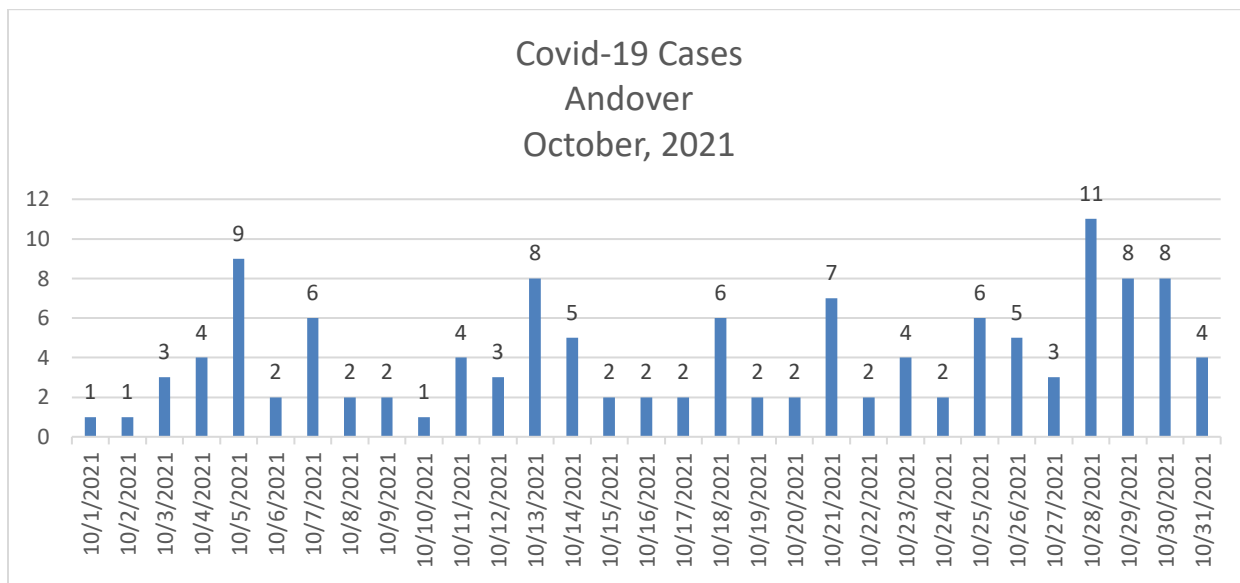
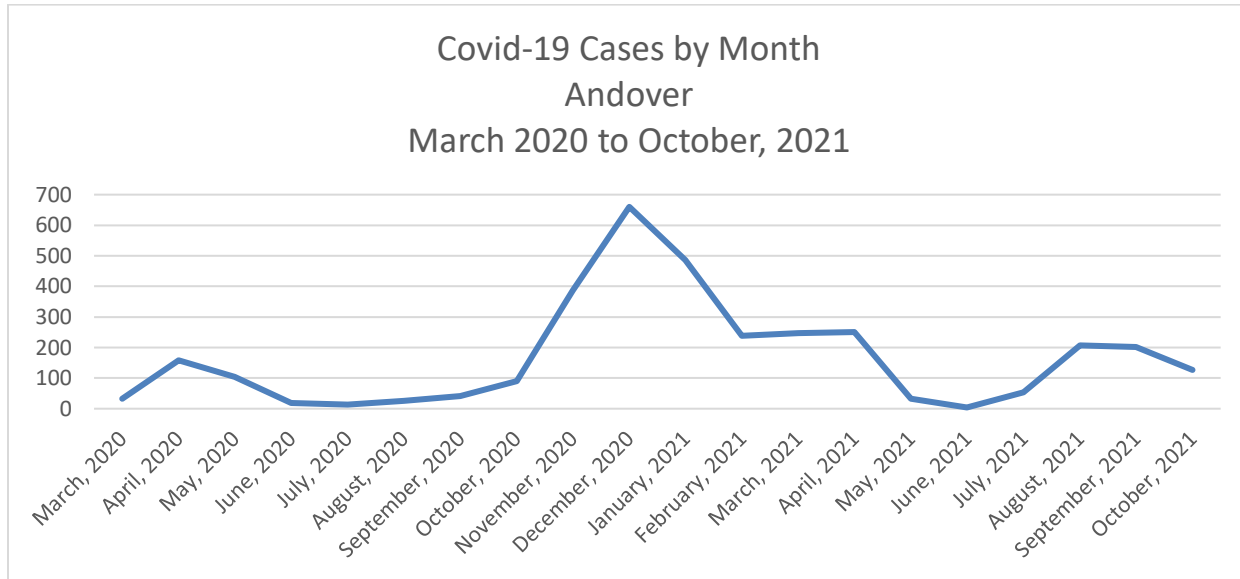
### Precautions to Take:

- If you have not been vaccinated, or have not completed your vaccination series, **do so now**. To find a vaccination clinic, click here: <https://www.mass.gov/covid-19-vaccine>.
- If you are unvaccinated, you should wear a face covering inside public spaces and elsewhere, where crowds might be located.
- Fully vaccinated persons should consider wearing a face covering when entering crowded indoor spaces.
- Third doses of vaccine have been approved, and for certain populations like immune-compromised and persons at high risk of exposure. Those third doses can be sought at pharmacies and medical practices.
- If you have been identified as a close contact of a positive person, consider being tested no sooner than 5 days after you last exposure to that person. To find a test site, visit <https://www.mass.gov/info-details/find-a-covid-19-test>.
- The Commonwealth has created an anonymous alert system to notify you if you may have been close to a positive person; you must sign up to be part of this system. Visit here for details: <https://member.everbridge.net/index/406686158291020/#/signup>.

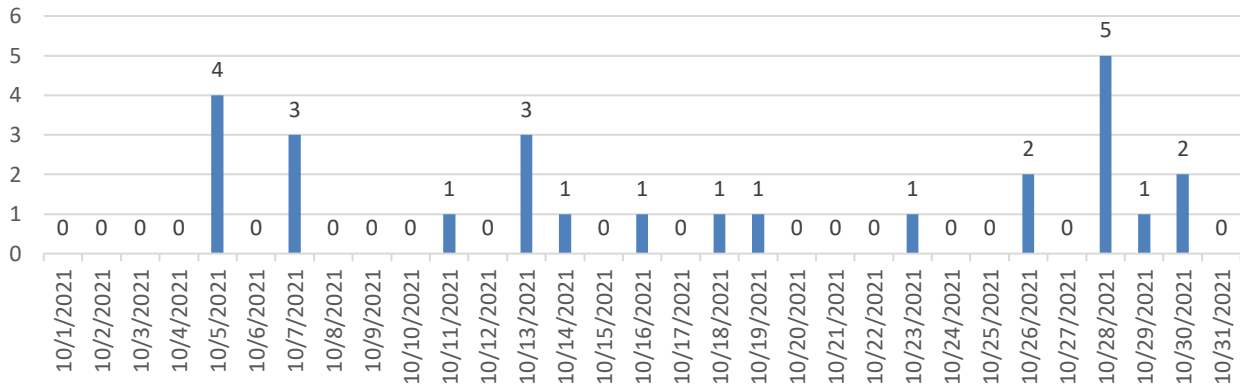
### Face Covering Guidance:

- If you are unvaccinated, you should wear a mask.
- On Public Transportation and Ride Shares, all persons **MUST** wear face coverings.
- You **MUST** wear a face covering inside a medical facility and congregate care facilities.
- You **MUST** wear a face covering inside a public school building.
- You **MUST** wear a face covering inside The Robb Center, Memorial Hall Library, and the Cormier Youth Center.
- You **MUST** wear a face covering inside any municipal building, and as all municipal board and committee meetings.
- If you are immunocompromised, even if vaccinated, you should wear a mask in crowded areas.
- If you reside with a person who is immunocompromised, you should wear a mask in crowded areas.
- If you are at increased risk for severe disease because of age or weakened immune system, you should wear a mask indoors when not at home.

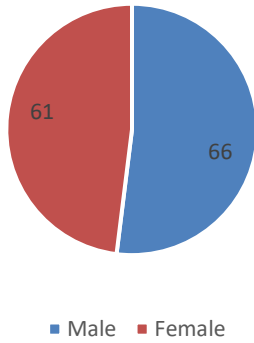
**OCTOBER REVIEW**



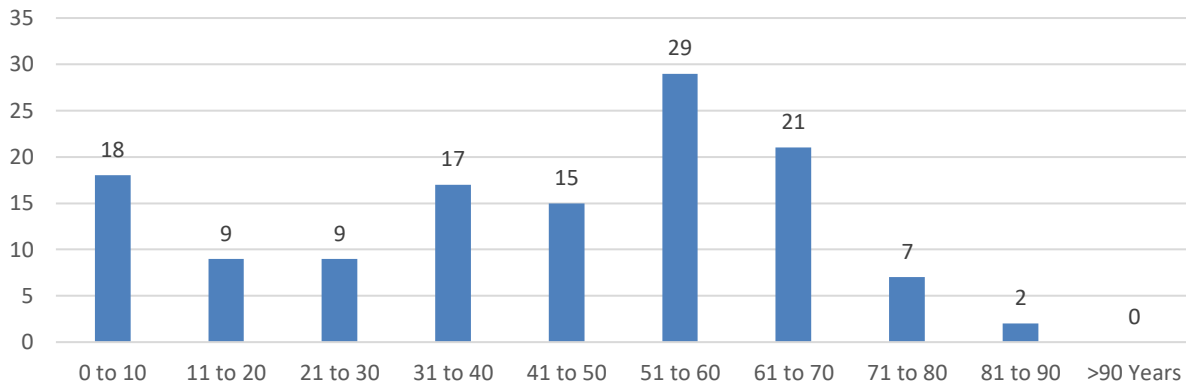
Covid-19 Cases Ages 0 to 16 years  
Andover  
October, 2021



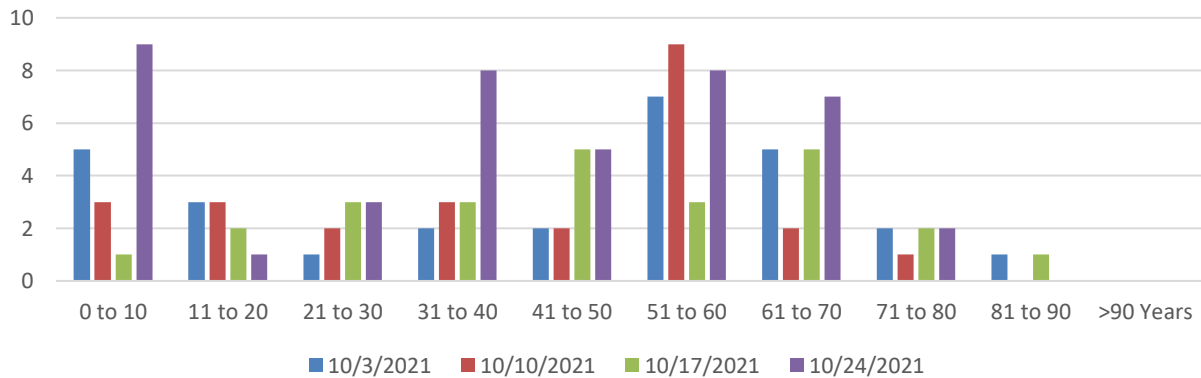
Covid-19 Cases by Gender  
Andover  
October, 2021



**Covid-19 Cases by Age Group (YEARS)**  
**Andover**  
**October, 2021**



**Covid-19 Cases by Age Group & Week**  
**Andover**  
**October, 2021**



Age Range	10/3/2021	10/10/2021	10/17/2021	10/24/2021
0 to 10	5	3	1	9
11 to 20	3	3	2	1
21 to 30	1	2	3	3
31 to 40	2	3	3	8
41 to 50	2	2	5	5
51 to 60	7	9	3	8
61 to 70	5	2	5	7
71 to 80	2	1	2	2
81 to 90	1	0	1	0
>90 Years	0	0	0	0

**Items to Note**

- 61 of the 127 October cases came from 23 homes (48%).
- 2 of the cases were identified in a senior care facility due to testing at time of facility entry.
- There was one single case in the Merrimack College Dorms in Andover.
- Looking at the graph of cases in persons 0 to 16 years, 4 of the 7 cases reported on October 5 & 7 are in sibling units.
- Looking at the graph of cases in persons 0 to 16 years, 7 of the 8 cases reported on October 28 to 30 are in sibling units.