



# TOWN OF ANDOVER

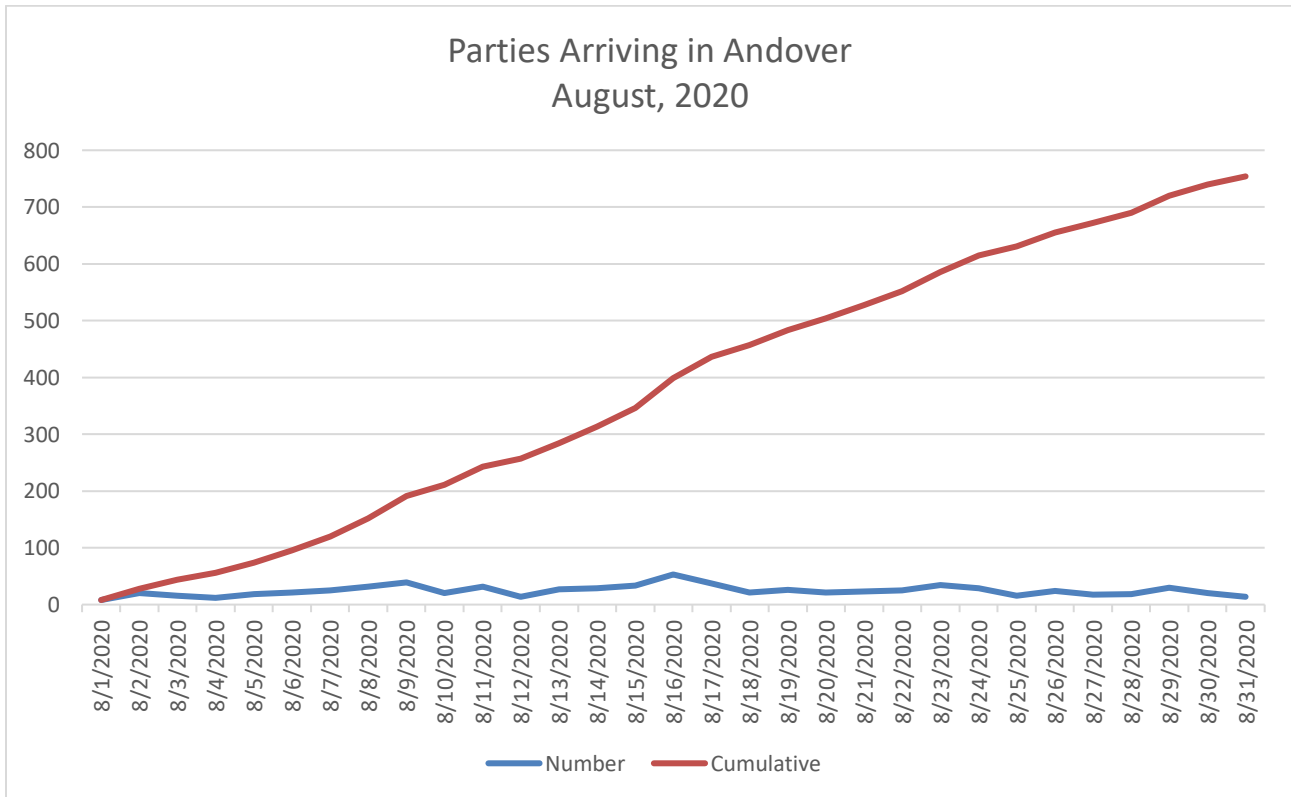
Town Offices  
36 Bartlet Street  
Andover, MA 01810  
(978) 623-8200  
www.andoverma.gov

## COVID-19 DATA REVIEW September 1, 2020

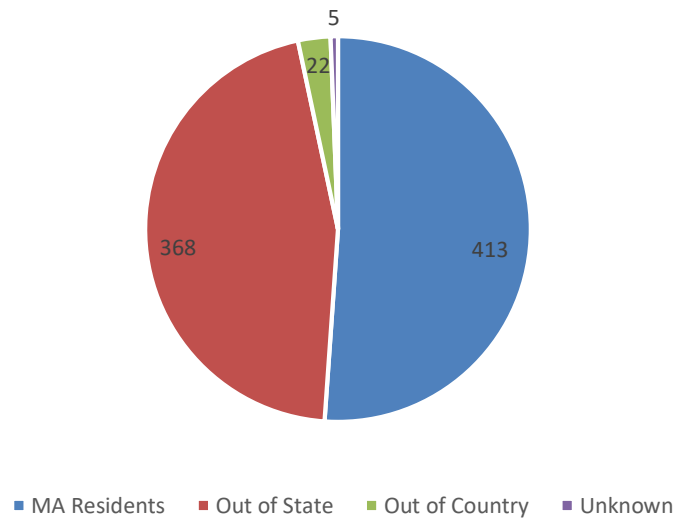
### Travel Data

Effective August 1, 2020, Governor Baker's Travel Order (Covid-19 Order No. 45) requires that persons returning to the Commonwealth must complete a travel form. The data is managed by the state, but is sorted by community where the person will be, and that data is made available to the appropriate community.

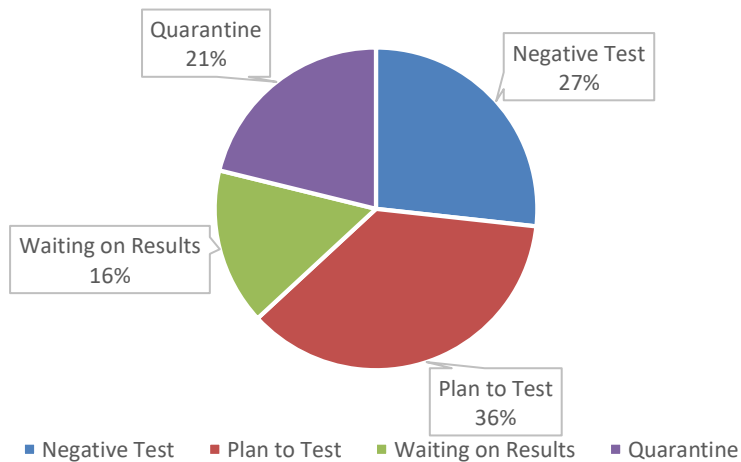
On September 1, 2020, there were 808 records filed prior to that date. Several of the records document arrivals prior to August 1<sup>st</sup>, and several are preregistrations indicating that persons would be traveling in early September. Some of the records include dependents, but this report does not include those numbers.



### MA Travel August, 2020



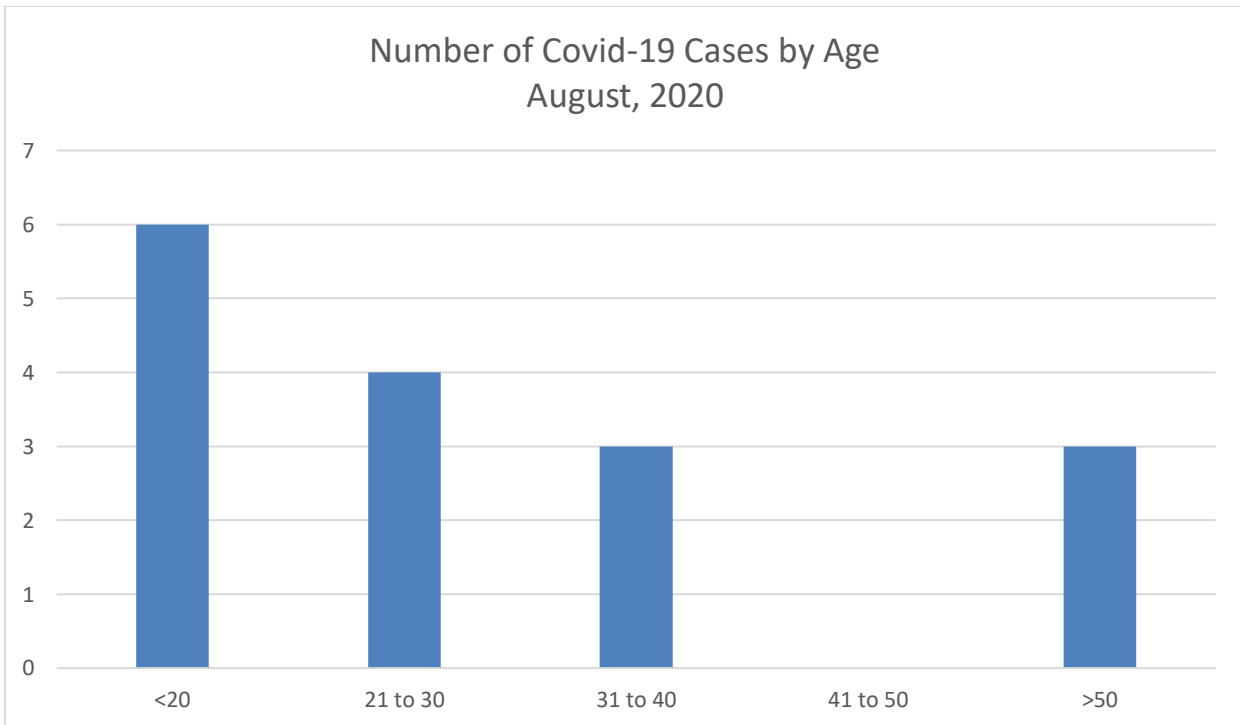
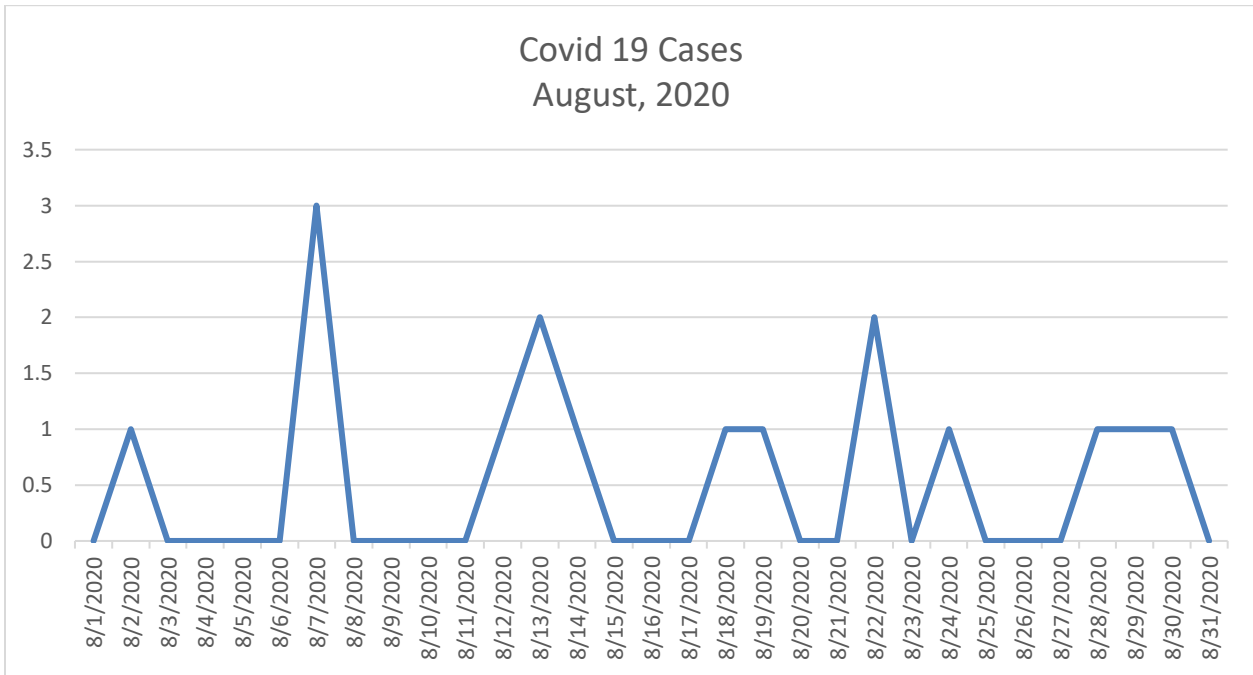
### Quarantine Status August, 2020



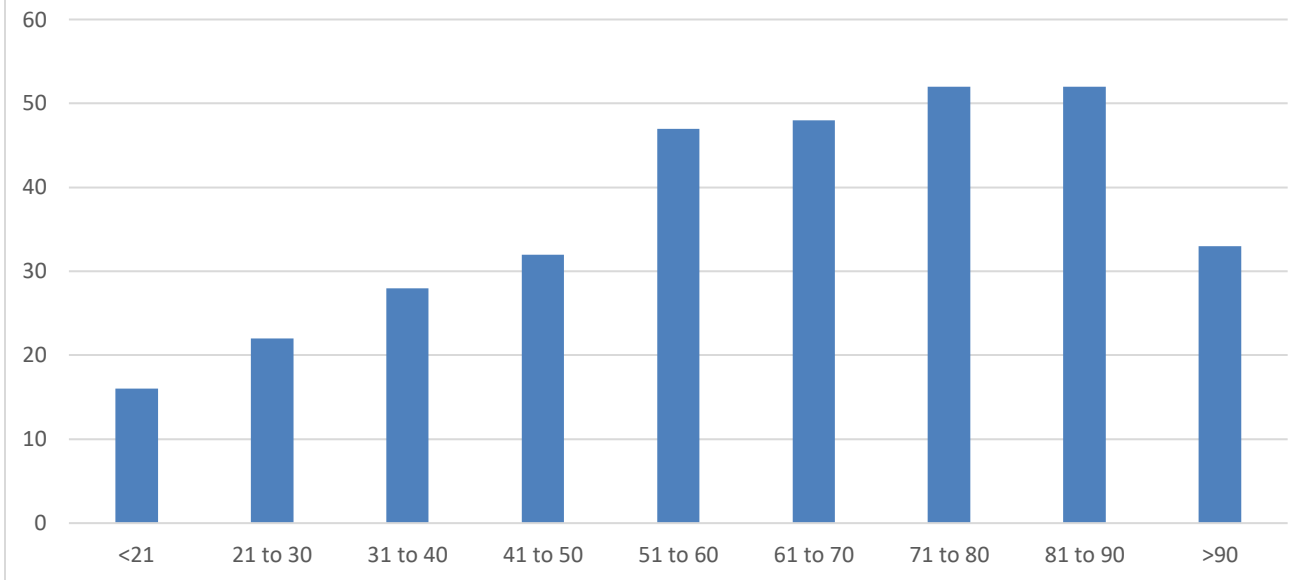
#### Observations:

- Just over 50% of the records indicate that the reports come from persons returning home.
- Respondents were given four choices for Quarantine Status: Prepared to Quarantine, Plan to Test, Waiting on Test Results, and Negative Test Received. 43% of respondents had tested prior to arrival.
- This data is self-reported and does not provide us much useful information. It does not identify where someone might be staying, and is dependent upon persons being honest. The list likely does not reflect the actual number of person who have traveled at that time.
- The data provides a “home state”, but not a location of original travel.

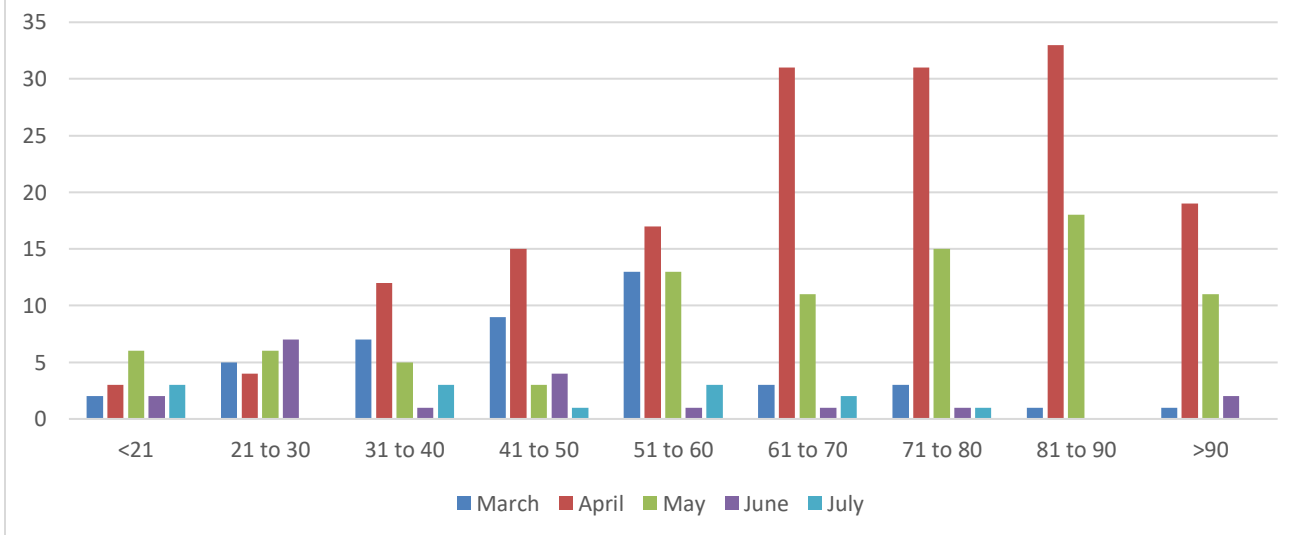
### Covid-19 Positive Case Data

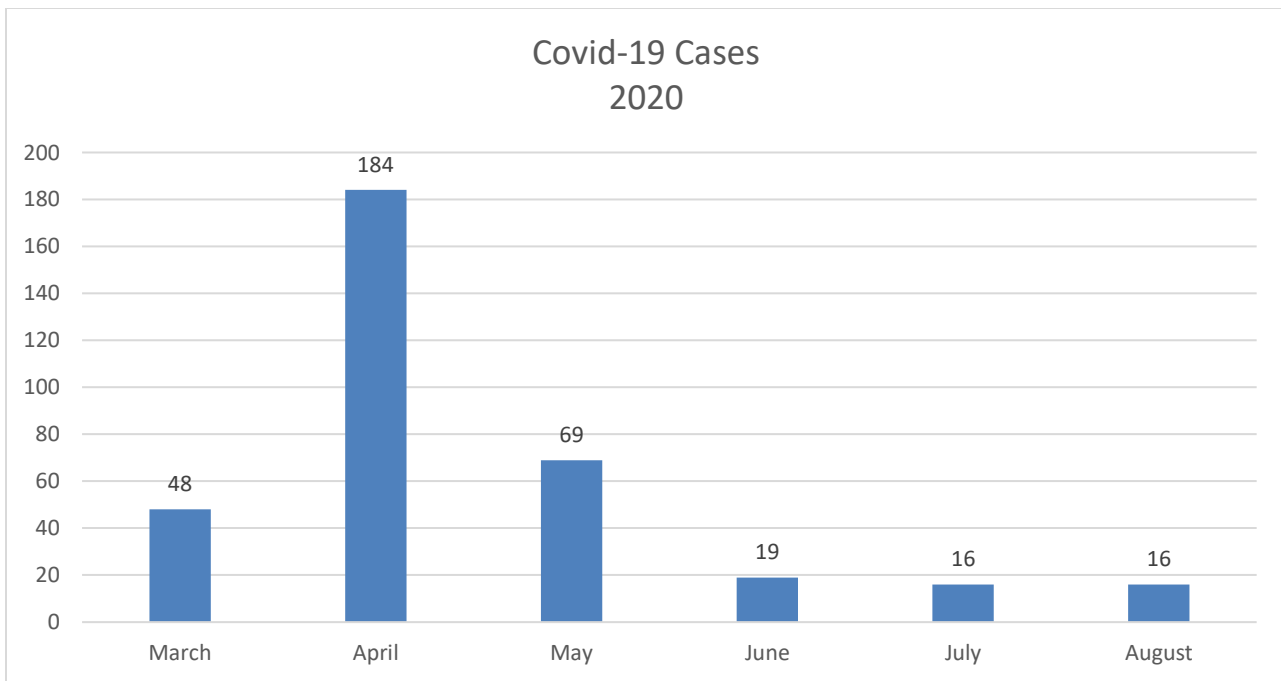


Covid-19 Cases by Age  
March 1 to July 31, 2020



Covid-19 Cases  
by Age & Month





**Observations:**

- The vast majority of cases in August are in young people. Of the 16 cases, all but 3 are in persons under 41 years of age.
- Case counts appear to be stable for the past three months, but it should be noted that contact tracing has become more difficult as society has opened up. With increased activity comes more opportunities for exposures, and more discussion about who should be quarantining.
- Several of the most recent “deaths” are in persons who were listed as “recovered” in earlier months. The reader should be aware that while active disease may have been eliminated in the patient, the damage done to the body is such that they never fully recover their health.

**Data from Weekly Covid-19 Dashboard 9/2/2020**

Community	Total Case Count	Case Count (Last 14 Days)	Avg. Daily Incident Rate per 100,000 (last 14 days)	Relative Change in Case Counts	Total Tests	Total Test (last 14 days)	Total Positive Tests (last 14 days)	% Positivity (Last 14 Days)	Change in Percent Positivity
Andover	354	9	1.8	Higher	11368	1860	10	0.54%	No Change
Haverhill	1361	43	4.7	Higher	21491	2800	46	1.64%	Higher
Lawrence	4151	184	14.9	Higher	38301	4489	207	4.61%	Higher
Lynnfield	115	7	4.3	Higher	3754	702	7	1.00%	Higher
Methuen	1169	39	5.2	Lower	17363	2394	48	2.01%	Lower
N. Andover	389	11	2.6	Higher	15695	5902	11	0.19%	No Change
N. Reading	213	7	3.0	Lower	4579	914	11	1.20%	Lower
Reading	323	11	2.9	Higher	7846	1371	14	1.02%	No Change
Tewksbury	635	9	2.1	Lower	11707	1610	13	0.81%	Lower
Wilmington	361	10	2.9	Higher	6252	960	11	1.15%	Higher

### Andover Weekly Data

Date	Total Case Count	Case Count (Last 14 Days)	Avg. Daily Incident Rate per 100,000 (last 14 days)	Relative Change in Case Counts	Total Tests	Total Test (last 14 days)	Total Positive Tests (last 14 days)	% Positivity (Last 14 Days)	Change in Percent Positivity
8/12/2020	337	14	2.8	Higher	8331	1489	14	0.94%	No Change
8/19/2020	345	14	2.8	Lower	9306	1697	14	0.82%	Lower
8/26/2020	351	11	2.2	Lower	10201	1743	11	0.63%	Lower
9/2/2020	354	9	1.8	Higher	11368	1860	10	0.54%	No Change
State 9/2/2020	119426	4138	4.2	Higher	2478482	470762	5037	1.07%	Lower

### Observations

- Andover continues to have the best case rate in the region. In fact, the case rate has improved over the previous three weeks.
- The percent positivity of cases continued to drop; the current rate state-wide is 1.07%.
- The “change” descriptors do not seem to be accurate, based on the historical data.
- Overall, it appears that the town is trending in a good direction.