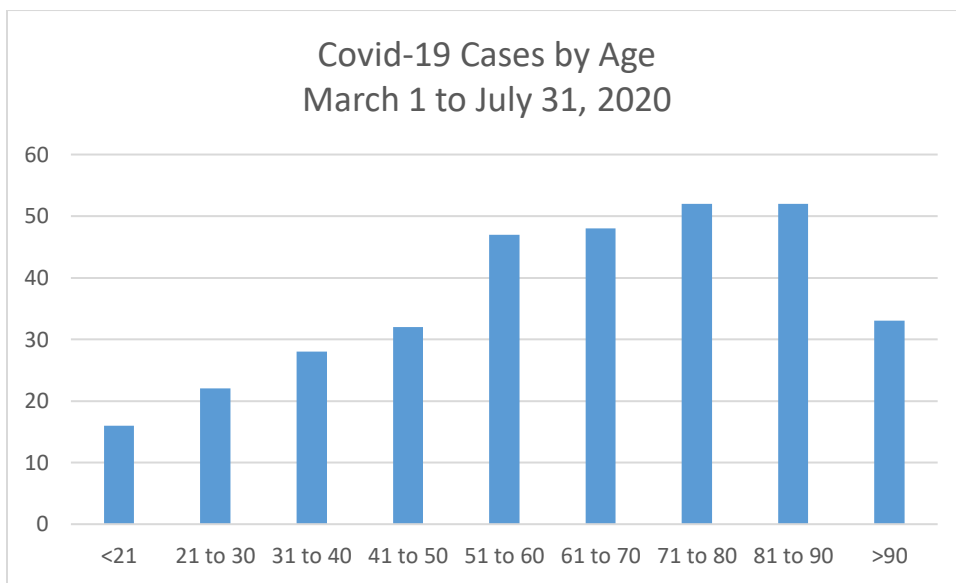
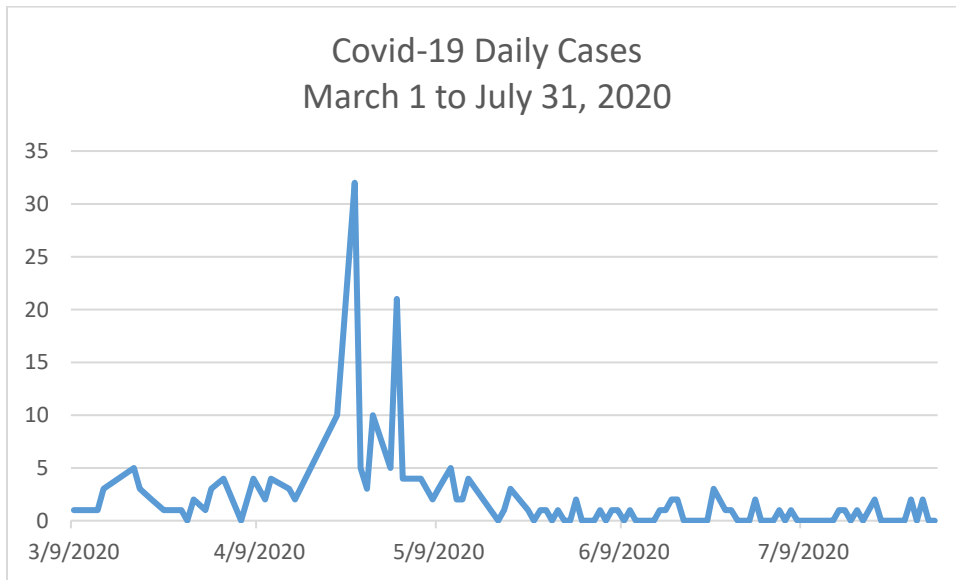
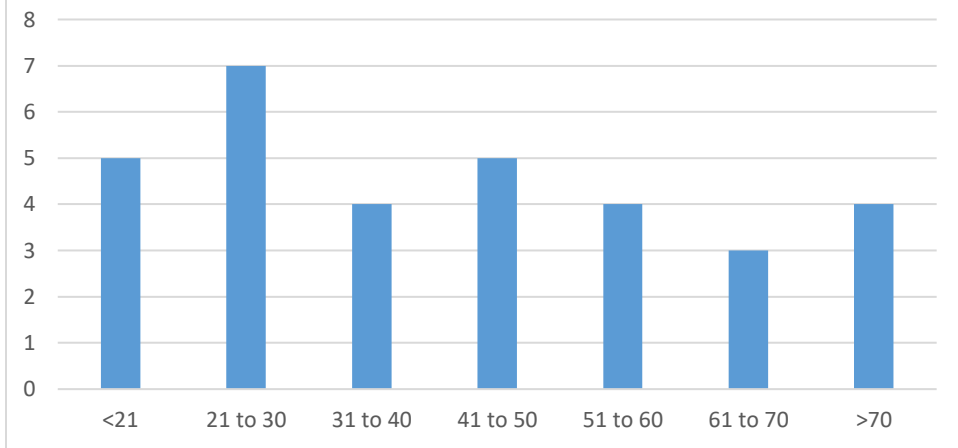


ANDOVER COVID-19 CASE DATA

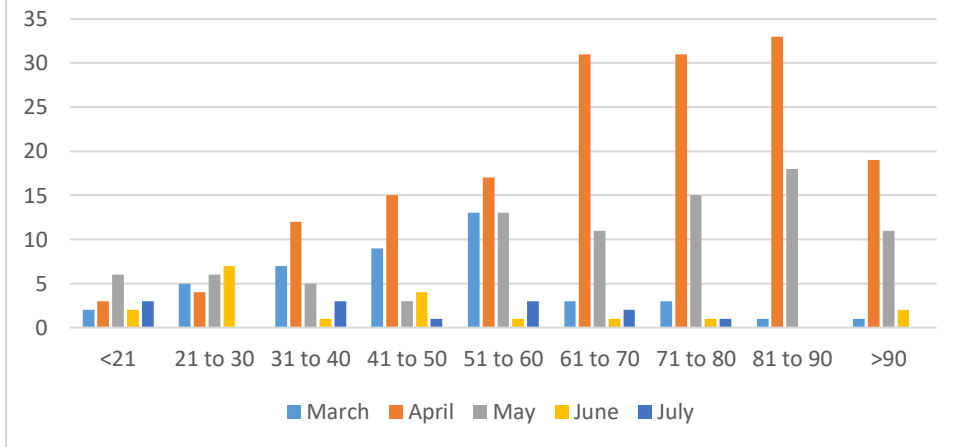
AUGUST 1, 2020



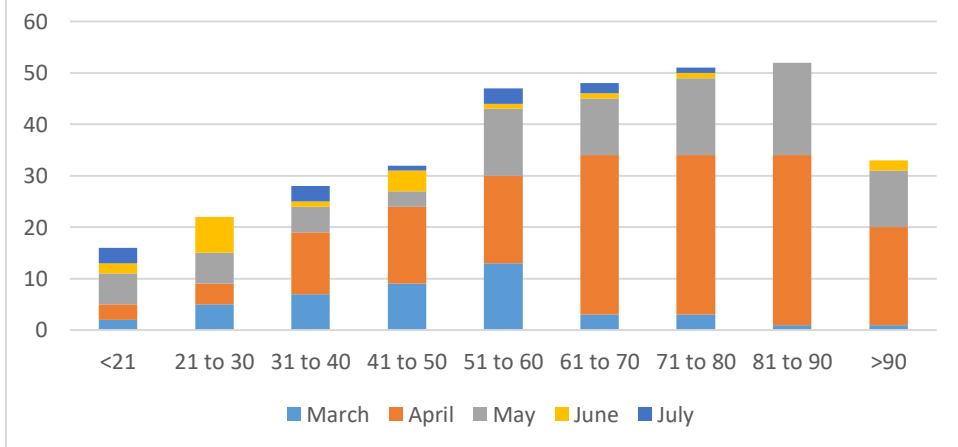
Covid-19 Age Distribution
June 1 to July 31, 2020



Covid-19 Cases
by Age & Month



Covid-19 Cases
by Age & Month



Weekly Community Data
8/13/2020

Community	Total Case Count	Case Count (Last 14 Days)	Avg. Daily Incident Rate per 100,000 (last 14 days)	Relative Change in Case Counts	Total Tests	Total Test (last 14 days)	Total Positive Tests (last 14 days)	% Positivity (Last 14 Days)	Change in Percent Positivity
Andover	337	14	2.8	higher	8331	1481	14	0.94%	No Change
Haverhill	1291	22	2.4	higher	16826	2270	25	1.10%	No Change
Lawrence	3878	105	8.5	Lower	30890	4437	125	2.82%	Lower
Lynnfield	106	6	3.7	higher	2689	463	8	1.73%	Higher
Methuen	1096	15	2.0	Lower	13619	1939	21	1.08%	Lower
N. Andover	374	10	2.4	Higher	8243	1332	12	0.90%	Higher
N. Reading	201	5	2.2	Higher	3248	636	6	0.94%	Higher
Reading	309	<5	<5	Lower	5793	929	4	0.43%	Lower
Tewksbury	614	13	3.0	Higher	9327	1622	14	0.86%	Higher
Wilmington	347	5	1.5	Higher	4801	609	6	0.99%	Higher