



TOWN OF ANDOVER

Town Offices
 36 Bartlet Street
 Andover, MA 01810
 (978) 623-8200
 www.andoverma.gov

COVID-19 DATA REVIEW December 18, 2020

Data from Weekly Covid-19 Dashboard 12/17/2020

Community	Total Case Count	Case Count (Last 14 Days)	Avg. Daily Incident Rate per 100,000 (last 14 days)	Relative Change in Case Counts	Total Tests	Total Test (last 14 days)	Total Positive Tests (last 14 days)	% Positivity (Last 14 Days)	Change in Percent Positivity
Andover	1154	288	57.0	Higher	48022	5533	331	5.98%	Higher
Haverhill	3783	990	107.2	Higher	76576	10700	1166	10.90%	Higher
Lawrence	11685	2515	204.8	Higher	120048	18619	3223	17.31%	Higher
Lynnfield	532	208	128.2	Higher	14182	2446	224	9.16%	Higher
Methuen	3748	1007	133.6	Higher	61480	9884	1264	12.79%	Higher
N. Andover	1389	366	86.3	Higher	80436	5647	407	7.21%	Higher
N. Reading	552	127	54.5	Higher	18048	2557	148	5.79%	Higher
Reading	770	185	47.7	Higher	27449	3899	203	5.21%	Higher
Tewksbury	1506	363	84.1	Higher	39853	5606	411	7.33%	No Change
Wilmington	899	208	60.7	Higher	21545	2983	228	7.64%	No Change

Andover Weekly Data

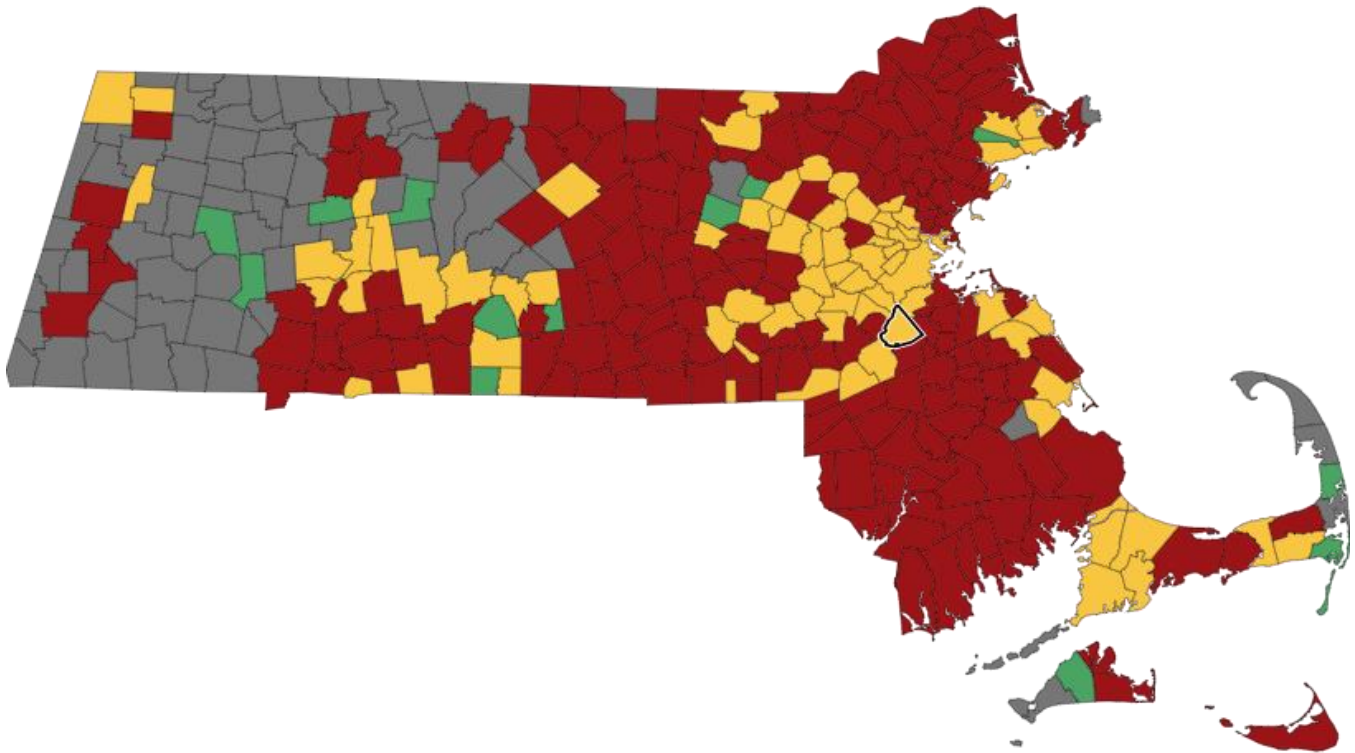
Date	Total Case Count	Case Count (Last 14 Days)	Avg. Daily Incident Rate per 100,000 (last 14 days)	Relative Change in Case Counts	Total Tests	Total Test (last 14 days)	Total Positive Tests (last 14 days)	% Positivity (Last 14 Days)	Change in Percent Positivity
11/12/2020	565	100	19.8	Higher	32868	5926	111	1.87%	Higher
11/19/2020	682	181	35.8	Higher	36385	6665	208	3.12%	Higher
11/27/2020	765	207	41.0	Higher	10123	6879	246	3.58%	Higher
12/3/2020	849	164	32.5	Lower	42069	5482	201	3.67%	No Change
12/10/2020	1007	228	45.16	Higher	45077	4898	257	5.25%	Higher
12/17/2020	1154	288	57.0	Higher	48022	5533	331	5.98%	Higher
State 12/17/2020	292316	63445	65.1	Higher	9809105	1202244	72236	6.01%	Higher

This table contains state-wide data & is intended to provide the reader with background on what type of cluster events are being noted.

Exposure Setting	New Clusters		
	(Identified 11/15 – 12/12)		
Exposure Setting	Clusters	Confirmed Cases	Close Contacts
24/7 Congregate Settings	36	225	52
Child Care	130	364	504
Colleges & Universities	7	63	12
Corrections	1	2	.
Hospitals	15	175	30
Household	15,740	40,339	---
Industrial Settings	16	65	25
K-12 Schools	31	151	130
Long Term Care Facilities	142	1,378	---
Offices	2	5	.
Organized Athletics/Camps	5	26	91
Other	1	5	.
Other Food Establishments	5	26	6
Other Healthcare	16	74	64
Other Workplaces	19	86	59
Places of Worship	1	6	.
Recreation/Cultural	4	23	.
Restaurants & Food Courts	30	182	53
Retail & Services	13	37	10
Senior Living	45	257	139
Shelters	.	.	.
Social Gatherings	46	262	71
Travel & Lodging	.	.	.
TOTAL	16,305	43,751	1,246

This map is from <https://www.bostonglobe.com/2020/11/19/nation/these-62-mass-communities-are-high-risk-covid-19/>.

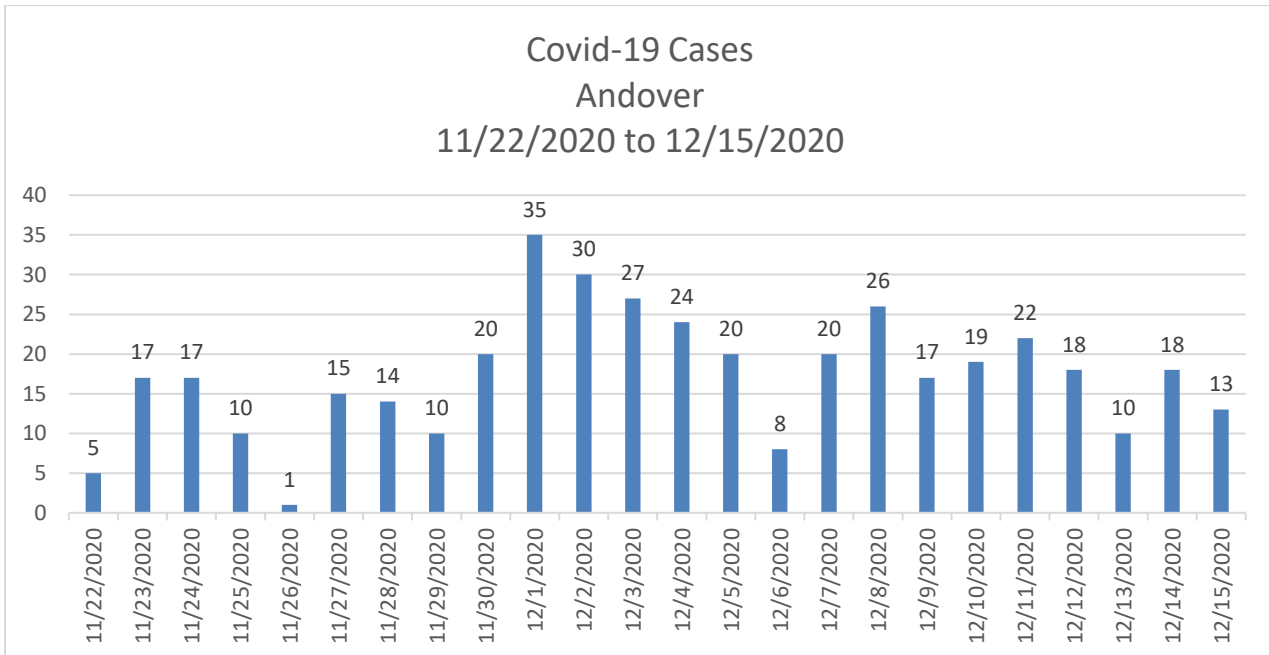
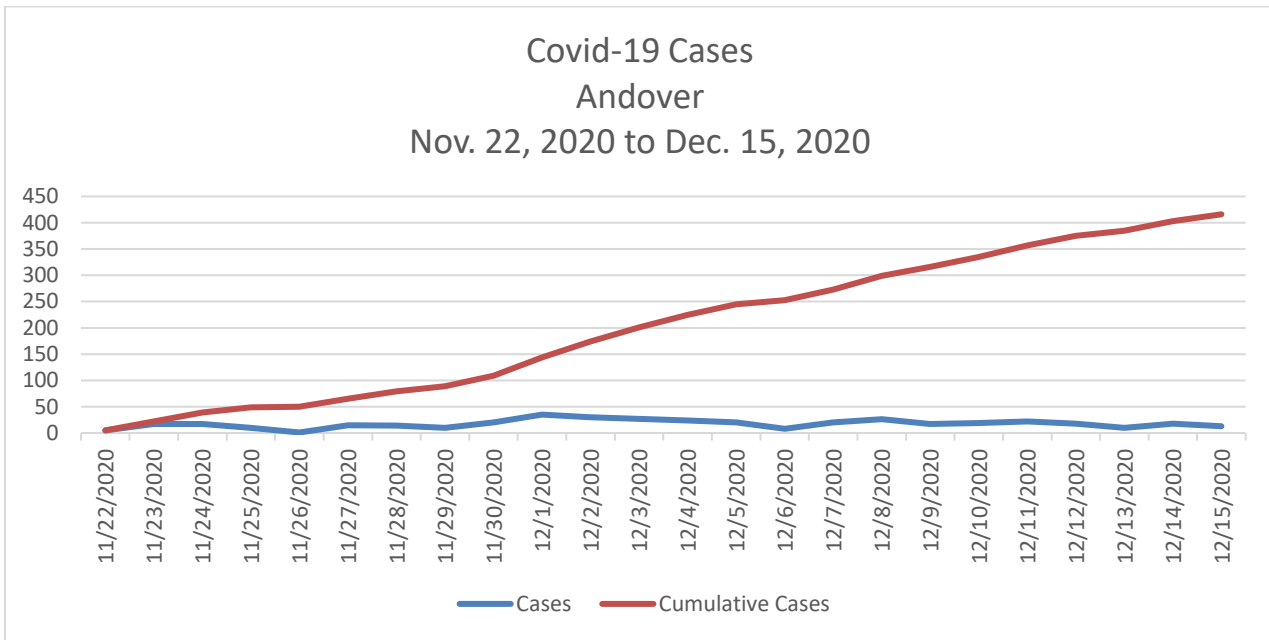
■ Lowest risk ■ Lower risk ■ Moderate risk ■ High risk



Observations:

- The entire region that we monitor is now considered High Risk; the larger area of the Northeast of Massachusetts follows this same trend.
- Andover's total positives in the state's two week look-back continues to rise.
- With the exception of last week's report, total residents tested have increased each week.
- State-wide data indicate that child care as well as long term care facilities are seeing an increase in cluster events.

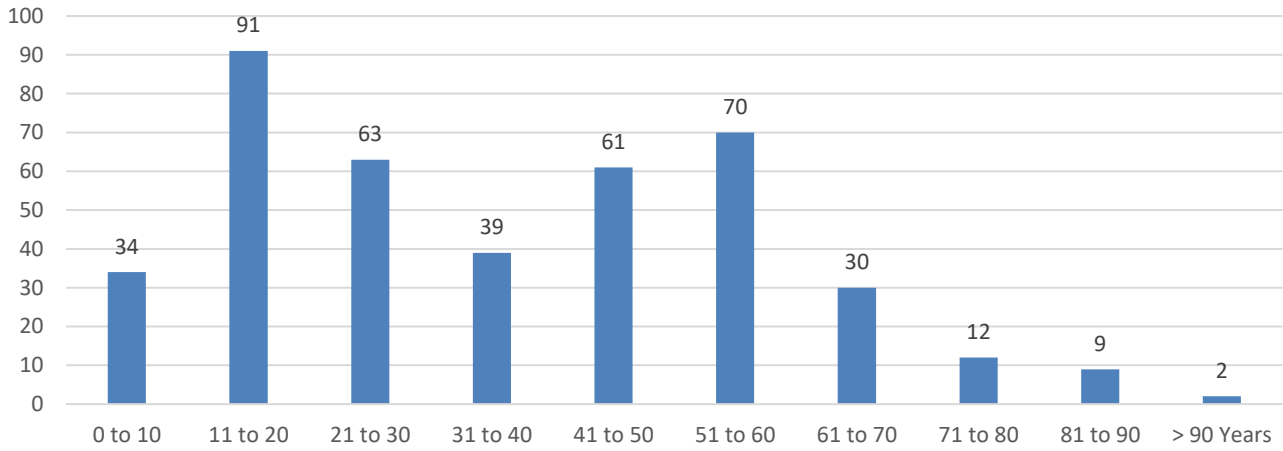
The following data was taken from MAVEN on 12/17/2020, for the dates 11/22/2020 through 12/15/2020.



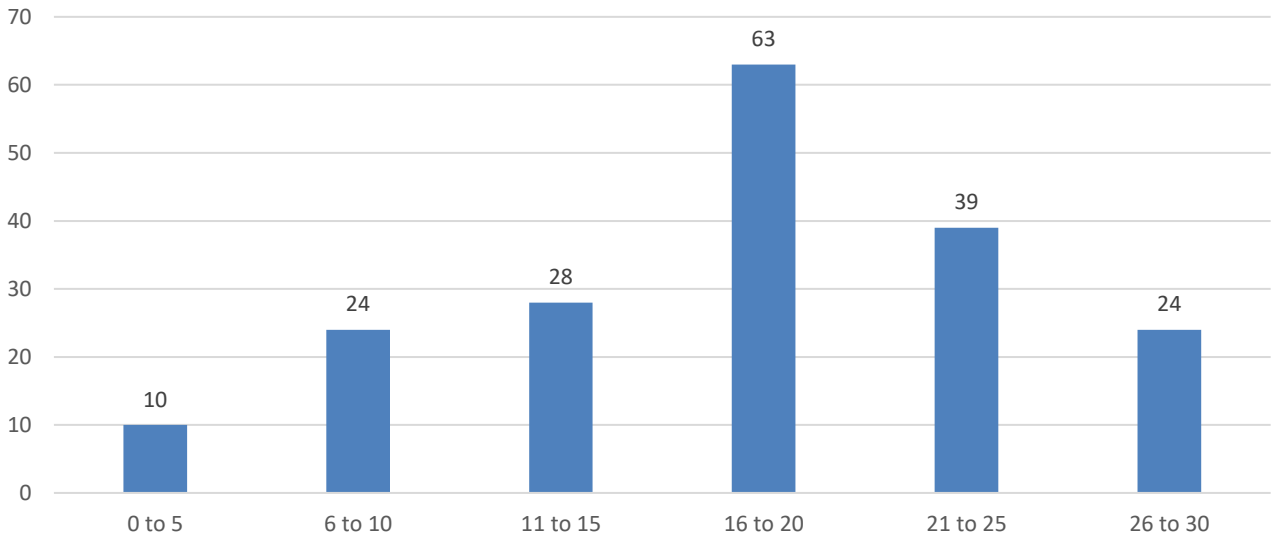
Observations:

- Of the 412 cases in this three week period, 215 (52%) cases live in 71 homes.
- We have consistently seen increases in case counts 5 to 10 days after a holiday. Thanksgiving was on November 26th, and we note an uptick in cases 4 days later. We anticipate another bump on or about December 29th due to gatherings at Christmas time.
- Of the 412 cases in the three week period, 2 are associated with Merrimack College, 2 are associated with Atria Marland Place, and 9 are associated with Academy Manor.

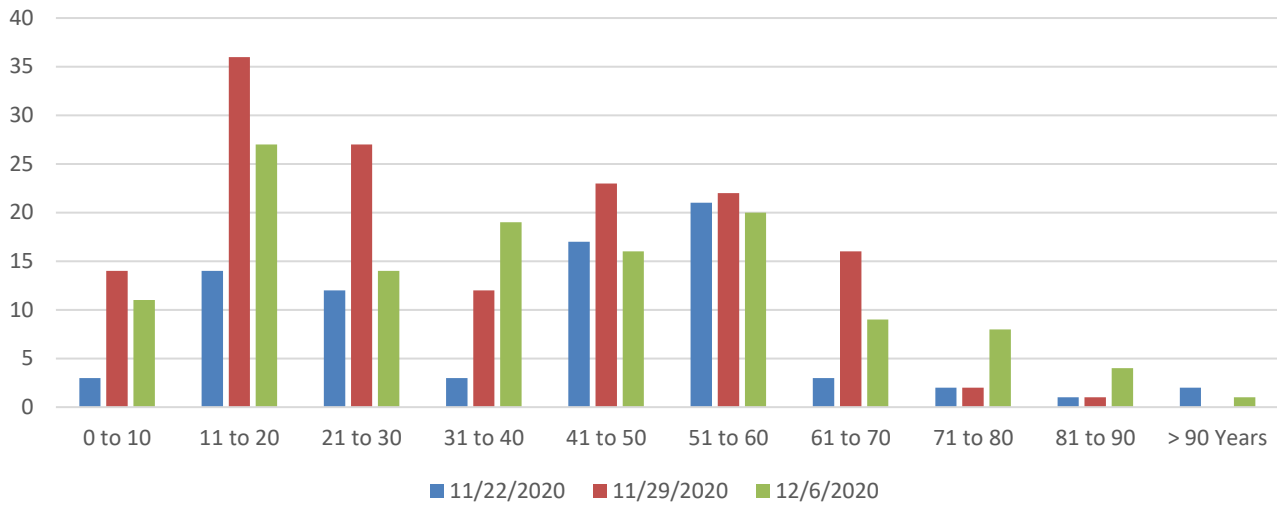
Covid-19 Cases by Age
Andover
11/22/2020 to 12/15/2020



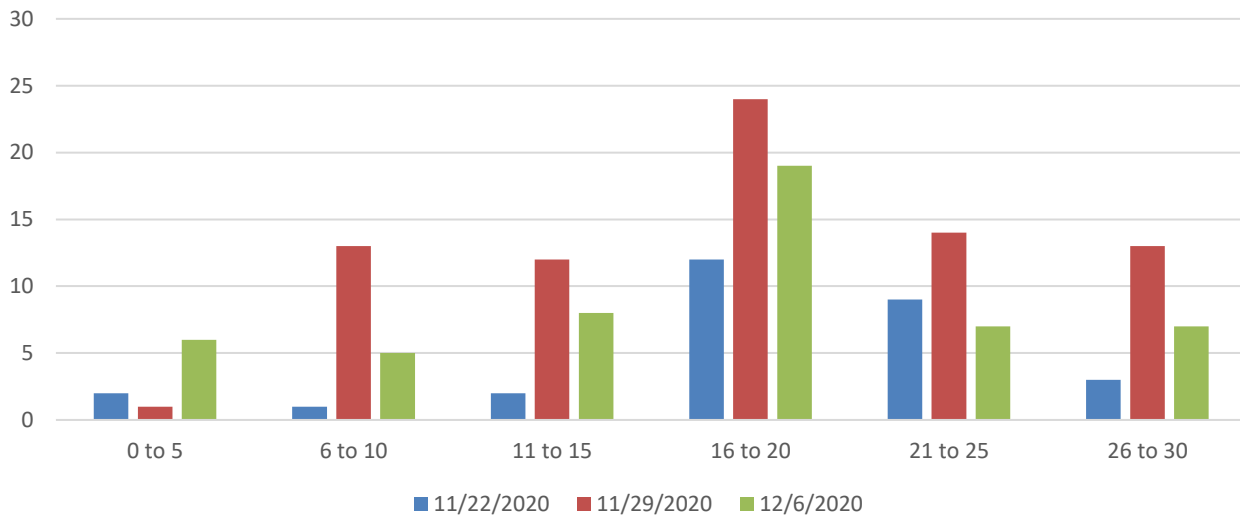
Covid-19 Cases by Age
Andover
11/22/2020 to 12/15/2020



Covid-19 Cases by Age and Week
Andover
11/22/2020 to 12/15/2020



Covid-19 Cases by Age
Andover
11/22/2020 to 12/15/2020



Age Range	11/22/2020	11/29/2020	12/6/2020
0 to 10	3	14	11
11 to 20	14	36	27
21 to 30	12	27	14
31 to 40	3	12	19
41 to 50	17	23	16
51 to 60	21	22	20
61 to 70	3	16	9
71 to 80	2	2	8
81 to 90	1	1	4
> 90 Years	2	0	1
Age Range	11/22/2020	11/29/2020	12/6/2020
0 to 5	2	1	6
6 to 10	1	13	5
11 to 15	2	12	8
16 to 20	12	24	19
21 to 25	9	14	7
26 to 30	3	13	7

Observations:

- The age group 11 to 20 years shows the highest case rate, which covers middle school and high school ages.
- The first week of December shows an increase in cases among older persons, which tracks with reports of cases from Academy Manor.
- Cases in 51 to 60 year old persons are fairly consistent across the three week study period.