



# TOWN OF ANDOVER

Town Offices  
 36 Bartlet Street  
 Andover, MA 01810  
 (978) 623-8200  
 www.andoverma.gov

## COVID-19 DATA REVIEW January 9, 2021

### Data from Weekly Covid-19 Dashboard 1/7/2021

Community	Total Case Count	Case Count (Last 14 Days)	Avg. Daily Incident Rate per 100,000 (last 14 days)	Relative Change in Case Counts	Total Tests	Total Test (last 14 days)	Total Positive Tests (last 14 days)	% Positivity (Last 14 Days)	Change in Percent Positivity
Andover	1584	286	56.6	Higher	55714	4780	331	6.92%	Higher
Haverhill	5023	750	81.2	Lower	90129	8279	888	10.73%	Lower
Lawrence	14253	1608	130.9	Higher	138537	10680	2111	19.77%	Higher
Lynnfield	749	137	84.4	Lower	17593	2149	152	7.07%	Lower
Methuen	4909	703	93.3	Lower	73605	7282	887	12.18%	Higher
N. Andover	1876	293	69.1	Lower	87790	4557	346	7.59%	No Change
N. Reading	798	146	62.6	Lower	21486	2034	155	7.62%	Lower
Reading	1155	262	67.6	Higher	33517	3730	283	7.59%	Higher
Tewksbury	2121	395	91.5	Higher	47726	4837	422	8.72%	Higher
Wilmington	1348	282	82.3	Lower	26116	2766	308	11.14%	Higher

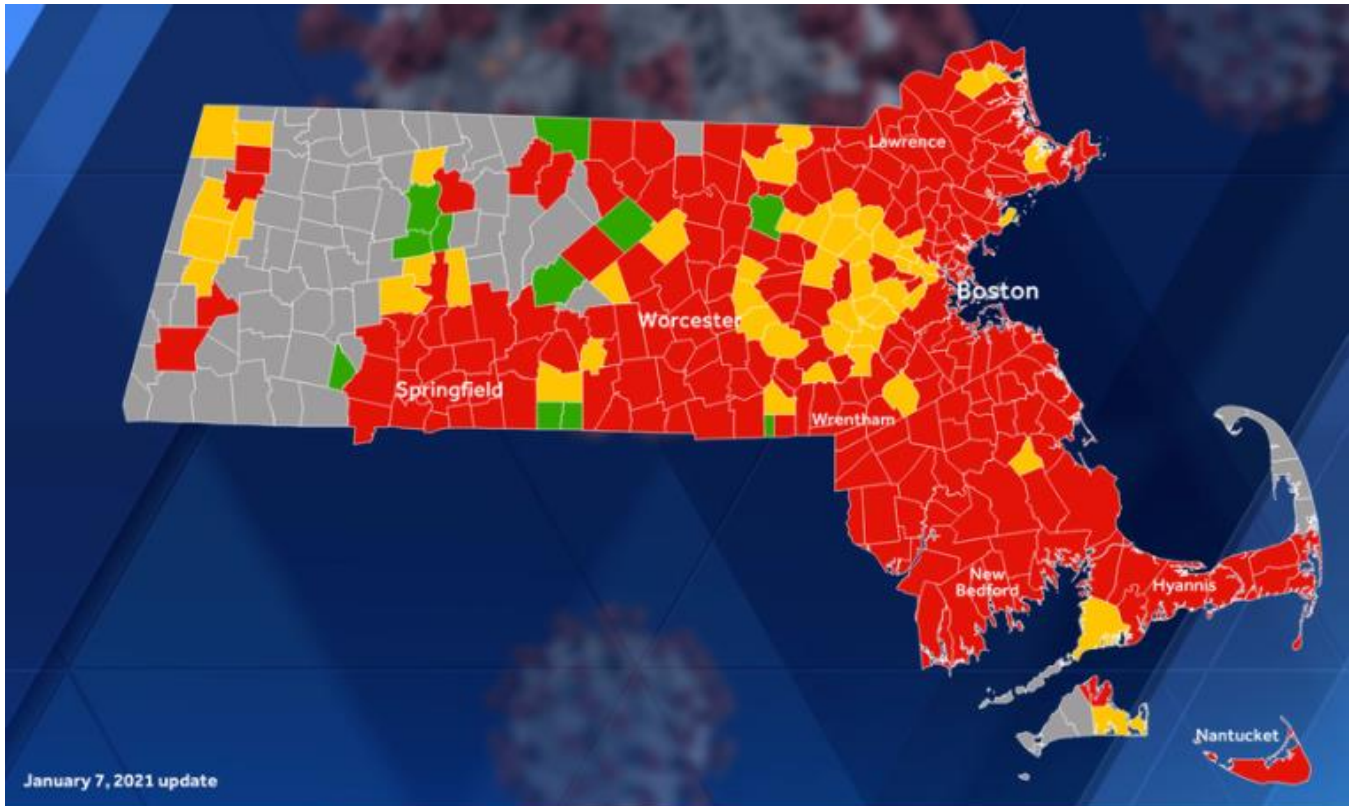
### Andover Weekly Data

Date	Total Case Count	Case Count (Last 14 Days)	Avg. Daily Incident Rate per 100,000 (last 14 days)	Relative Change in Case Counts	Total Tests	Total Test (last 14 days)	Total Positive Tests (last 14 days)	% Positivity (Last 14 Days)	Change in Percent Positivity
12/3/2020	849	164	32.5	Lower	42069	5482	201	3.67%	No Change
12/10/2020	1007	228	45.16	Higher	45077	4898	257	5.25%	Higher
12/17/2020	1154	288	57.0	Higher	48022	5533	331	5.98%	Higher
12/24/2020	1285	258	51.1	Lower	50911	5437	315	5.79%	Lower
12/31/2020	NO	DATA	THIS	WEEK	---	---	---	---	---
1/7/2021	1584	286	56.6	Higher	55714	4780	331	6.92%	Higher
State 1/7/2021	NO	DATA	PROVIDED	---	---	---	---	---	---

This table contains state-wide data & is intended to provide the reader with background on what type of cluster events are being noted.

Exposure Setting	New Clusters		
	(Identified 12/6 – 1/2)		
	Clusters	Confirmed Cases	Close Contacts
24/7 Congregate Settings	44	162	51
Child Care	155	478	671
Colleges & Universities	9	56	20
Corrections	3	89	3
Hospitals	18	173	15
Household	19,931	51,044	---
Industrial Settings	20	119	61
K-12 Schools	30	121	243
Long Term Care Facilities	122	1,186	---
Offices	7	19	2
Organized Athletics/Camps	14	63	171
Other	.	.	.
Other Food Establishments	6	30	29
Other Healthcare	21	127	57
Other Workplaces	20	87	30
Places of Worship	5	55	4
Recreation/Cultural	5	23	17
Restaurants & Food Courts	25	223	40
Retail & Services	15	41	24
Senior Living	52	396	33
Shelters	3	37	.
Social Gatherings	49	307	42
Travel & Lodging	1	2	.
<b>TOTAL</b>	<b>20,555</b>	<b>54,838</b>	<b>1,513</b>

The following Map was taken from: <https://www.wcvb.com/article/massachusetts-coronavirus-covid-19-community-spread-risk-map-color-coded/33646711#>

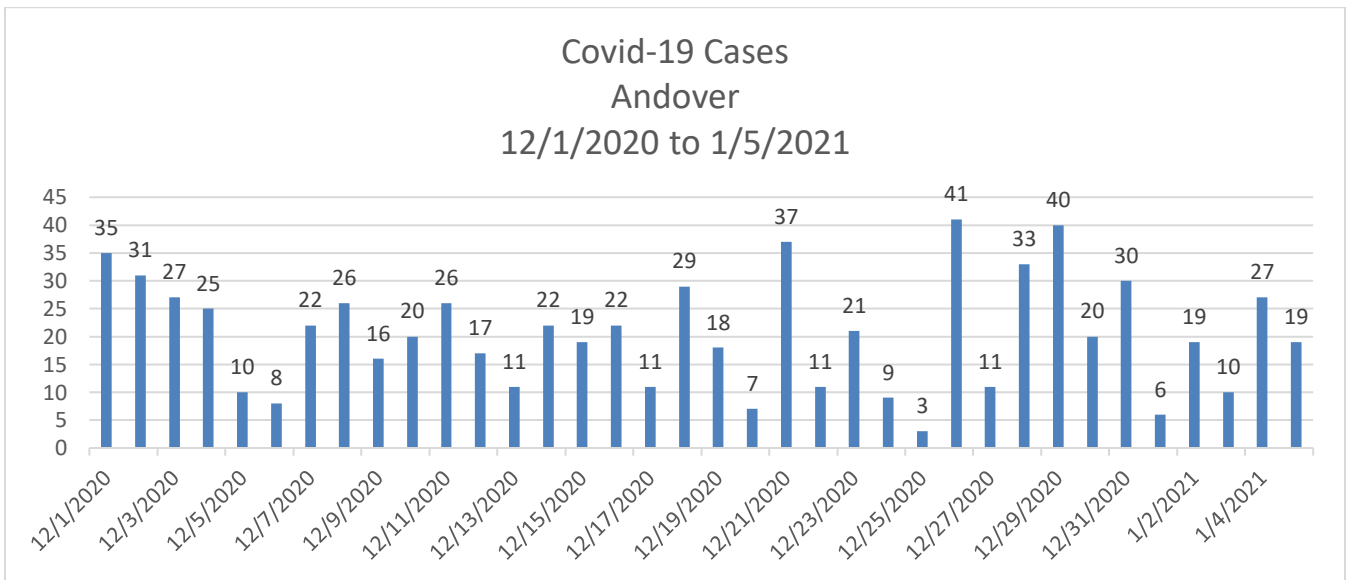
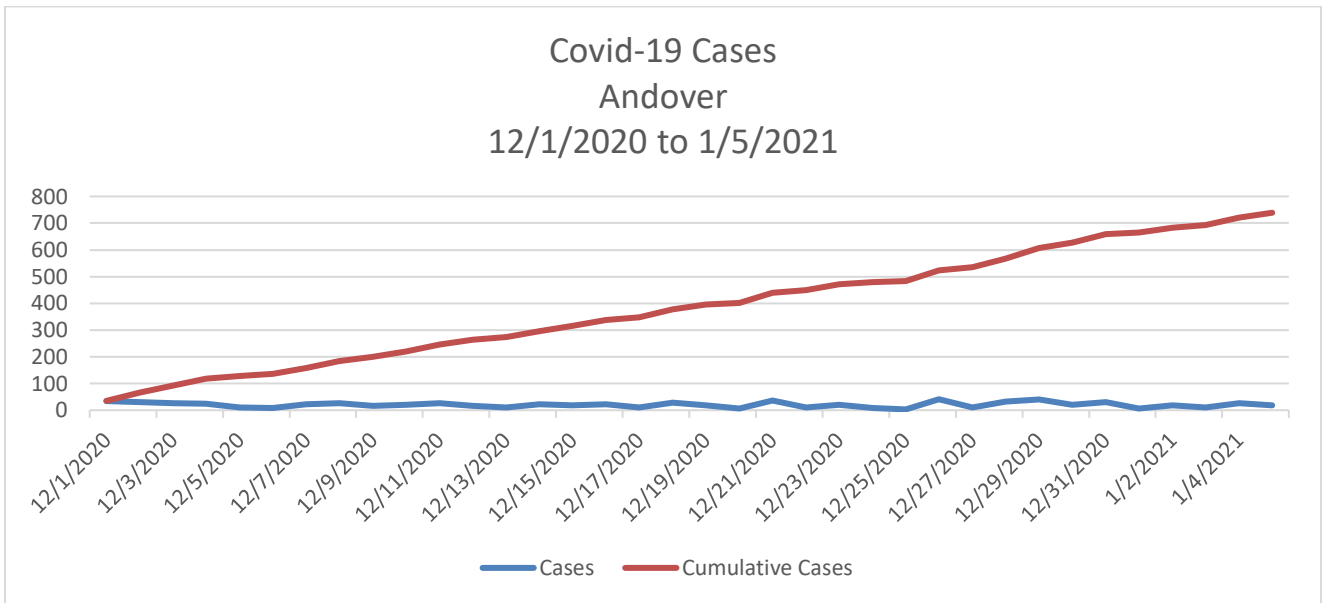


Mass COVID-19 map Jan. 7 update SOURCE: WCVB

**Observations:**

- In the latest 14 day lookback, there were fewer tests and more positive cases than in previous weeks, causing the positivity rate to increase.
- Of our peer communities, we have the lowest positivity rate.
- Beyond household spread, childcare and long term care facilities show the highest number of clusters state-wide. The long term care facilities data trends with the two long term care facilities in Andover (see details below).
- School related clusters continue to be few as compared to other cluster settings.
- Our entire region of Massachusetts is in the red high-risk zone.

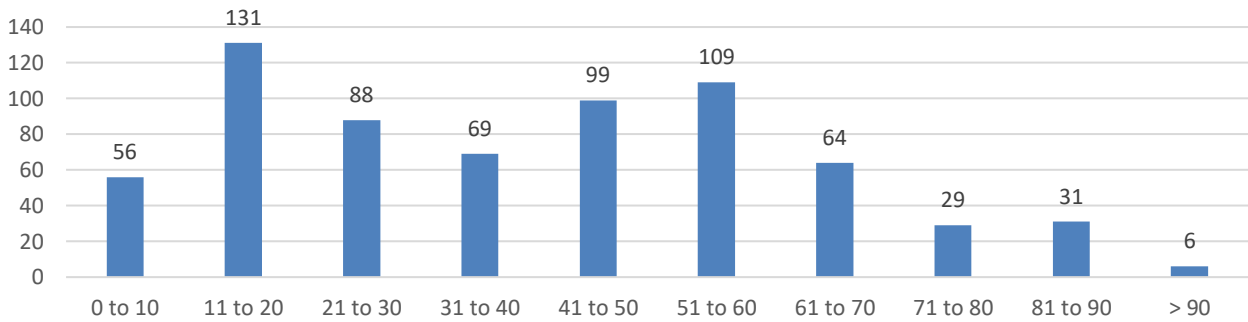
The following data was taken from MAVEN on 1/7/2021, for the dates **12/01/2020 through 1/05/2021.**



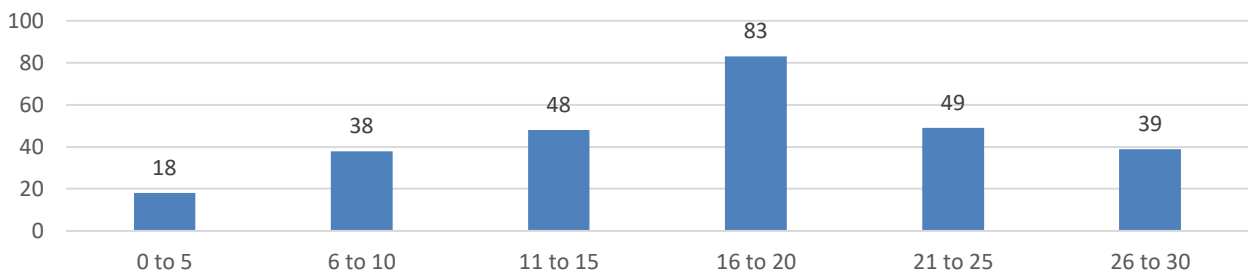
**Observations:**

- The high case counts at the start of December are a result of exposures following Thanksgiving.
- In the seven days prior to Christmas, there were **18.86** cases per day on average. In the 7 days following Christmas, there were **26.14** cases per day on average.
- While the cases for 12/26/2020 spike at 41, it should be noted that there were few cases the previous 2 days, indicating very little testing due to the holiday.
- Cases shown here are categorized by the date of testing; this is not an indication of a date of symptom onset or of exposure.

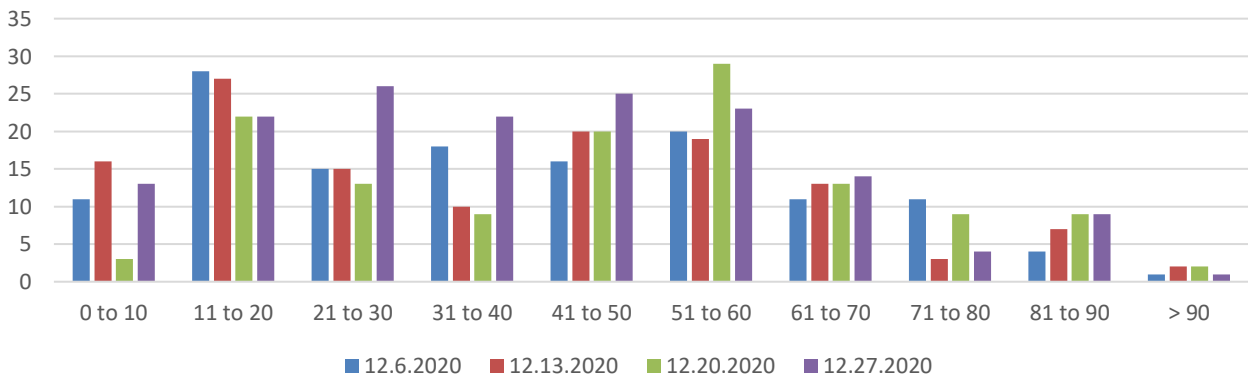
Covid-19 Cases by Age Range  
Andover  
December, 2020



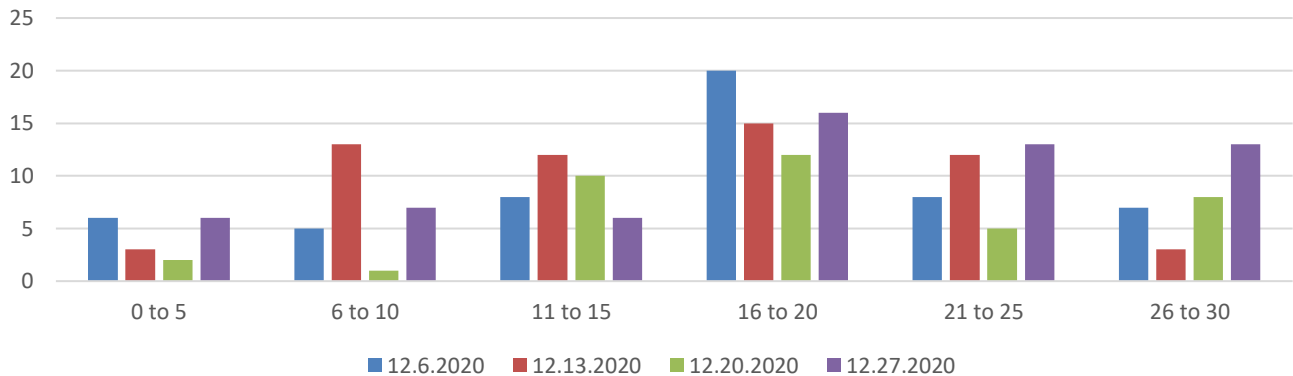
Covid-19 Cases by Age Range  
Andover  
December, 2020



Covid-19 Cases by Age  
Andover  
12/6/2020 to 1/2/2021



Covid-19 Cases by Age  
Andover  
12/6/2020 to 1/2/2021



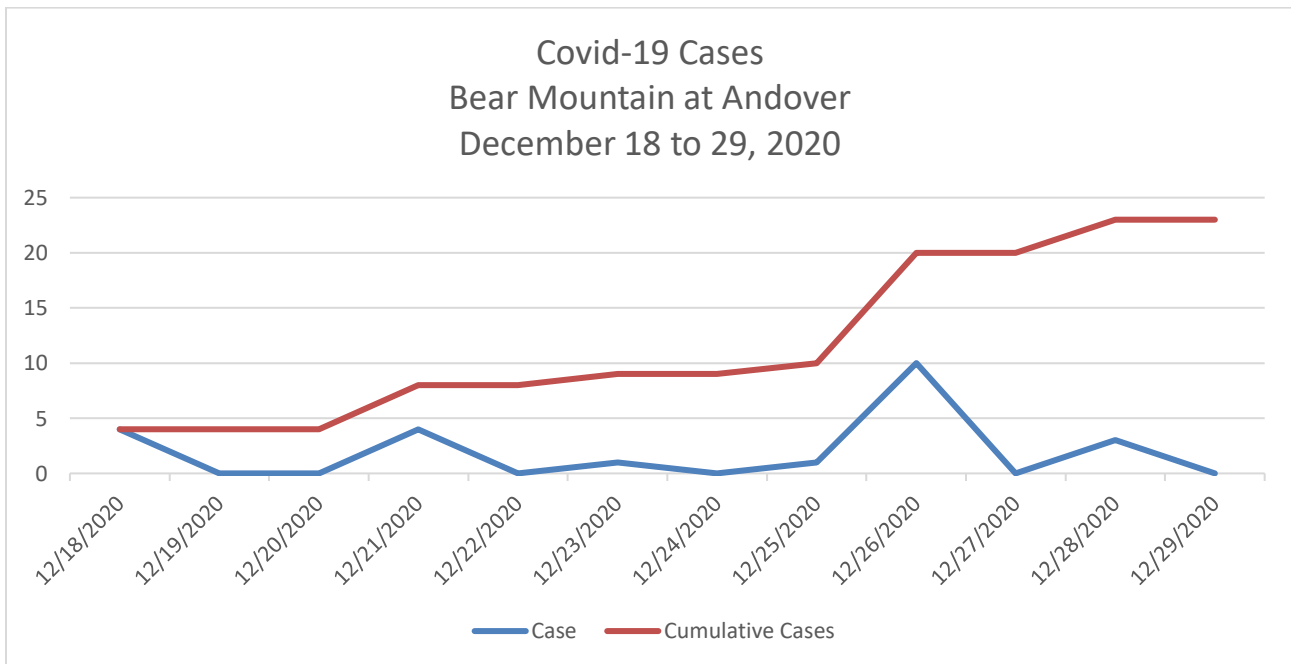
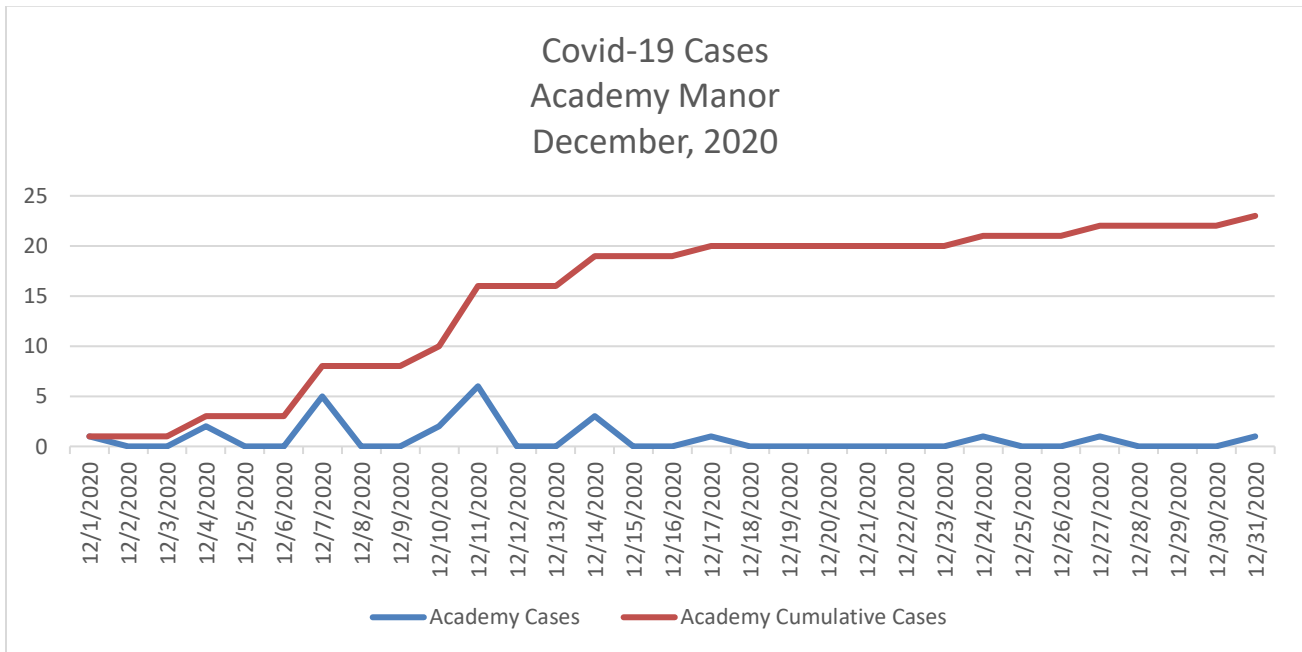
Age Range	12.6.2020	12.13.2020	12.20.2020	12.27.2020
0 to 10	11	16	3	13
11 to 20	28	27	22	22
21 to 30	15	15	13	26
31 to 40	18	10	9	22
41 to 50	16	20	20	25
51 to 60	20	19	29	23
61 to 70	11	13	13	14
71 to 80	11	3	9	4
81 to 90	4	7	9	9
> 90	1	2	2	1

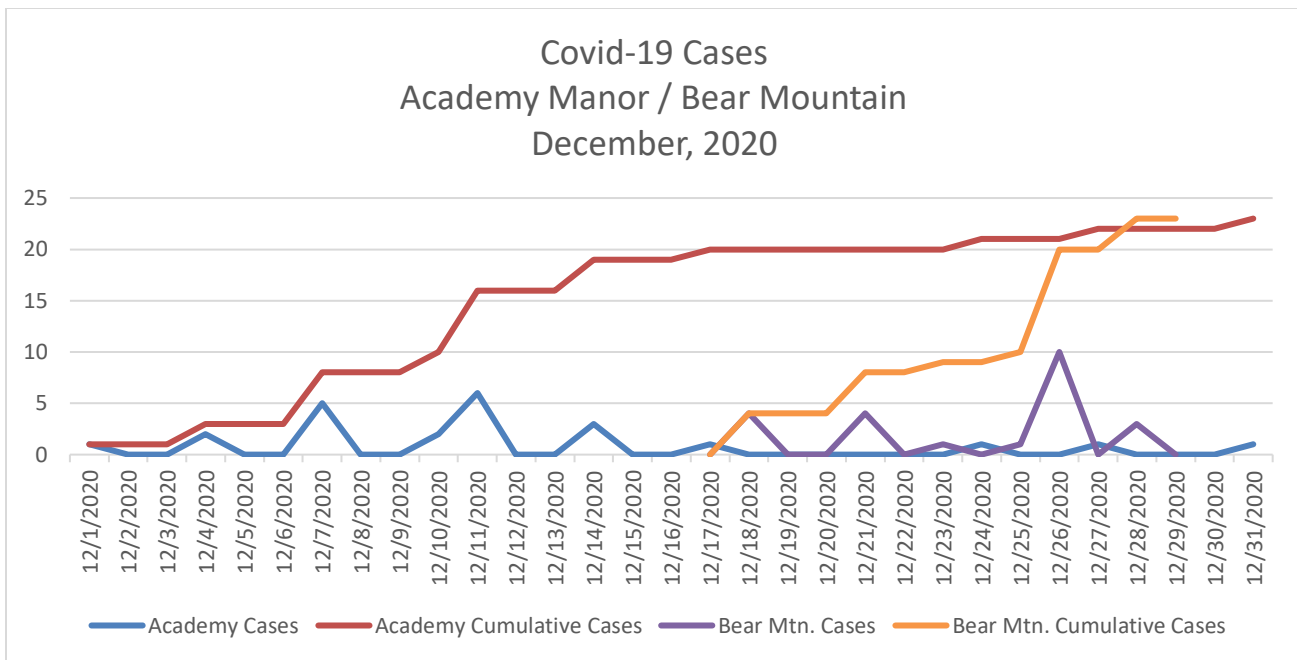
Age Range	12.6.2020	12.13.2020	12.20.2020	12.27.2020
0 to 5	6	3	2	6
6 to 10	5	13	1	7
11 to 15	8	12	10	6
16 to 20	20	15	12	16
21 to 25	8	12	5	13
26 to 30	7	3	8	13

**Observations:**

- Looking at the combined age groups of 6 to 15 years during the week of December 13<sup>th</sup>, we see a spike of 25 cases as opposed to the weeks prior and after; this coincides with the decision of Andover Public Schools to move to a fully remote schooling model the week of Christmas. The decrease in cases the following weeks indicates that the decision to move to hybrid may have been prudent and productive in decreasing cases in those ages.
- In December, persons age 16 to 20 had the highest number of cases.

- In looking at the age group of 71 to 80, we see spikes during the weeks of December 6 and 20; these coincide with outbreaks at Academy Manor and Bear Mountain, respectively.
- Persons over the age of 60 years appear to be continue to do a good job of avoiding the virus.





**Observations:**

- Both long term care facilities suffered outbreaks in the spring, as well as in December.
- Both have a similar number of cases, but Bear Mountain reached that number in a much shorter time than Academy Manor did.
- As of this reporting, 4 residents of Academy Manor and 2 residents of Bear Mountain had passed as a result of the virus.
- It should be noted that in an effort to keep personnel costs down, many senior care facilities maintain a good portion of the staff as part time help; this means that employees must seek employment in multiple facilities in order to make a living. It has been noted that this increases the chance that illness can be transmitted among facilities without anyone knowing it. In addition, an employee that is forced to quarantine due to an exposure could have adverse effects on multiple facilities, causing a stress on remaining employees.