



# TOWN OF ANDOVER

Town Offices  
 36 Bartlet Street  
 Andover, MA 01810  
 (978) 623-8200  
 www.andoverma.gov

## COVID-19 DATA REVIEW January 22, 2021

### Data from Weekly Covid-19 Dashboard 1/21/2021

Community	Total Case Count	Case Count (Last 14 Days)	Avg. Daily Incident Rate per 100,000 (last 14 days)	Relative Change in Case Counts	Total Tests	Total Test (last 14 days)	Total Positive Tests (last 14 days)	% Positivity (Last 14 Days)	Change in Percent Positivity
Andover	1852	284	56.2	Lower	61765	6088	324	5.32%	Lower
Haverhill	5947	984	106.6	Higher	100950	10817	1125	10.40%	Lower
Lawrence	16055	1976	160.9	Lower	154986	16850	2577	15.29%	Lower
Lynnfield	840	92	56.7	Lower	19803	2214	114	5.15%	Lower
Methuen	5680	841	111.6	Lower	82926	9446	993	10.51%	Lower
N. Andover	2125	271	63.9	Lower	93493	6032	333	5.52%	Lower
N. Reading	919	122	52.3	Lower	23926	2457	131	5.33%	Lower
Reading	1410	251	64.8	Lower	37932	4344	276	6.35%	Lower
Tewksbury	2437	331	76.7	Lower	53267	5805	356	6.13%	Lower
Wilmington	1616	264	77.1	Lower	29606	3524	286	8.12%	Lower

### Andover Weekly Data

Date	Total Case Count	Case Count (Last 14 Days)	Avg. Daily Incident Rate per 100,000 (last 14 days)	Relative Change in Case Counts	Total Tests	Total Test (last 14 days)	Total Positive Tests (last 14 days)	% Positivity (Last 14 Days)	Change in Percent Positivity
12/17/2020	1154	288	57.0	Higher	48022	5533	331	5.98%	Higher
12/24/2020	1285	258	51.1	Lower	50911	5437	315	5.79%	Lower
12/31/2020	NO	DATA	THIS	WEEK	---	---	---	---	---
1/7/2021	1584	286	56.6	Higher	55714	4780	331	6.92%	Higher
1/14/2021	1748	331	65.6	Higher	58725	5319	379	7.13%	Higher
1/21/2021	1852	284	56.2	Lower	61765	6088	324	5.32%	Lower
State 1/21/2021	458089	73601	75.5	Lower	12536712	1221035	83583	6.85%	Lower

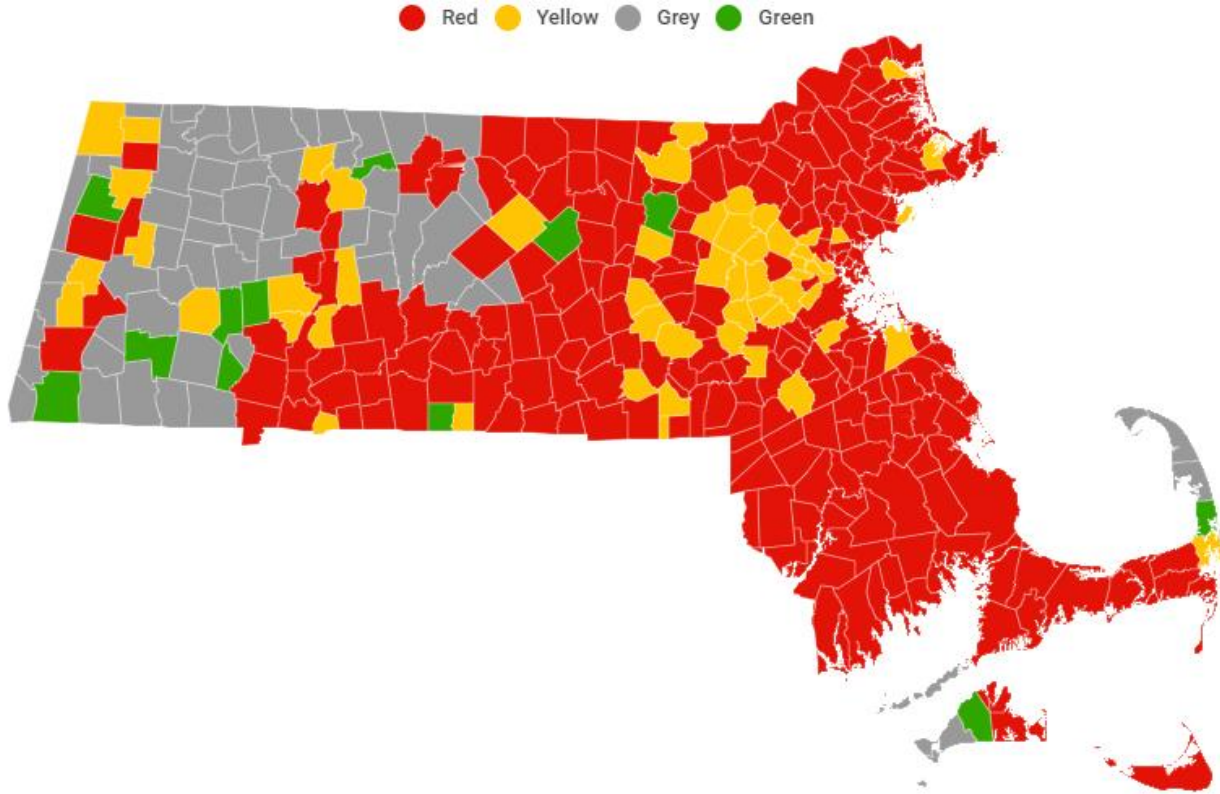
This table contains state-wide data & is intended to provide the reader with background on what type of cluster events are being noted.

Exposure Setting	New Clusters		
	(Identified 12/20 – 1/16)		
	Clusters	Confirmed Cases	Close Contacts
24/7 Congregate Settings	55	300	47
Child Care	131	395	571
Colleges & Universities	5	20	5
Corrections	5	49	4
Hospitals	22	138	59
Household	22,371	57,513	---
Industrial Settings	13	68	12
K-12 Schools	10	25	7
Long Term Care Facilities	91	984	---
Offices	7	24	10
Organized Athletics/Camps	26	88	210
Other	3	28	8
Other Food Establishments	1	5	.
Other Healthcare	16	54	10
Other Workplaces	9	29	3
Places of Worship	6	34	2
Recreation/Cultural	.	.	.
Restaurants & Food Courts	11	42	8
Retail & Services	19	83	44
Senior Living	36	287	92
Shelters	3	32	52
Social Gatherings	37	267	90
Travel & Lodging	.	.	.
<b>TOTAL</b>	<b>22,877</b>	<b>60,465</b>	<b>1,234</b>

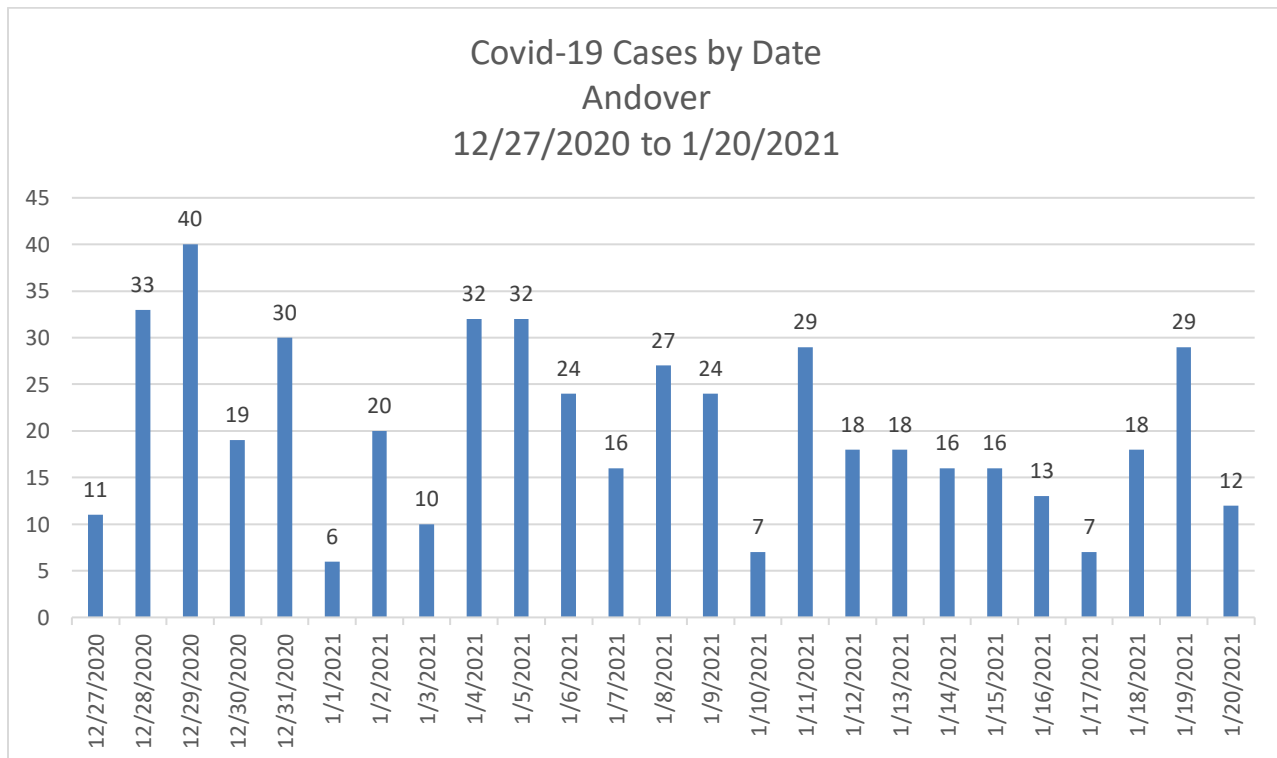
**Observations:**

- The positivity rate for the entire region has dropped for this two week look-back.
- Total tests for the look back period over the past three weeks has increased each week.
- Beyond household spread, clusters in the state-wide data show high numbers in child care settings, and long term care facilities.

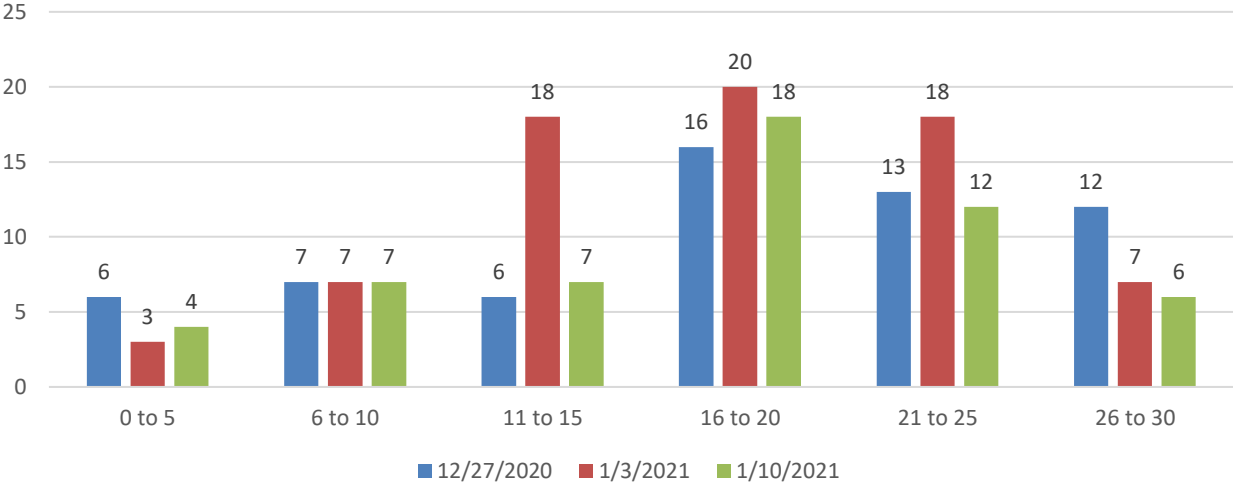
This map is from <https://www.wcvb.com/app/massachusetts-coronavirus-covid-19-charts-map-daily-updates/34191492> on 1/22/2021:



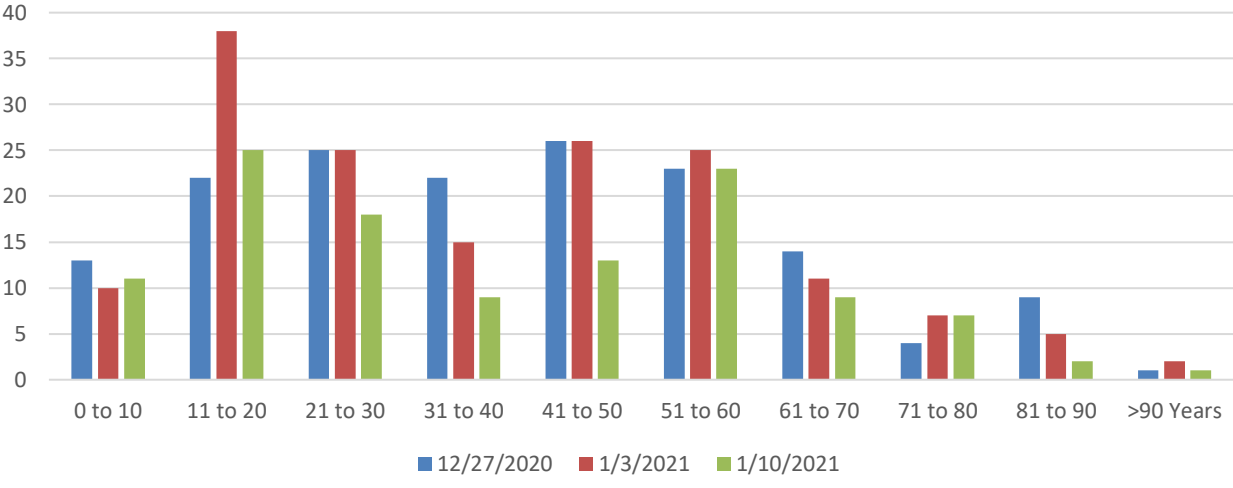
The following data was taken from MAVEN on 1/22/2021, for the dates 12/27/2020 through 1/20/2021.



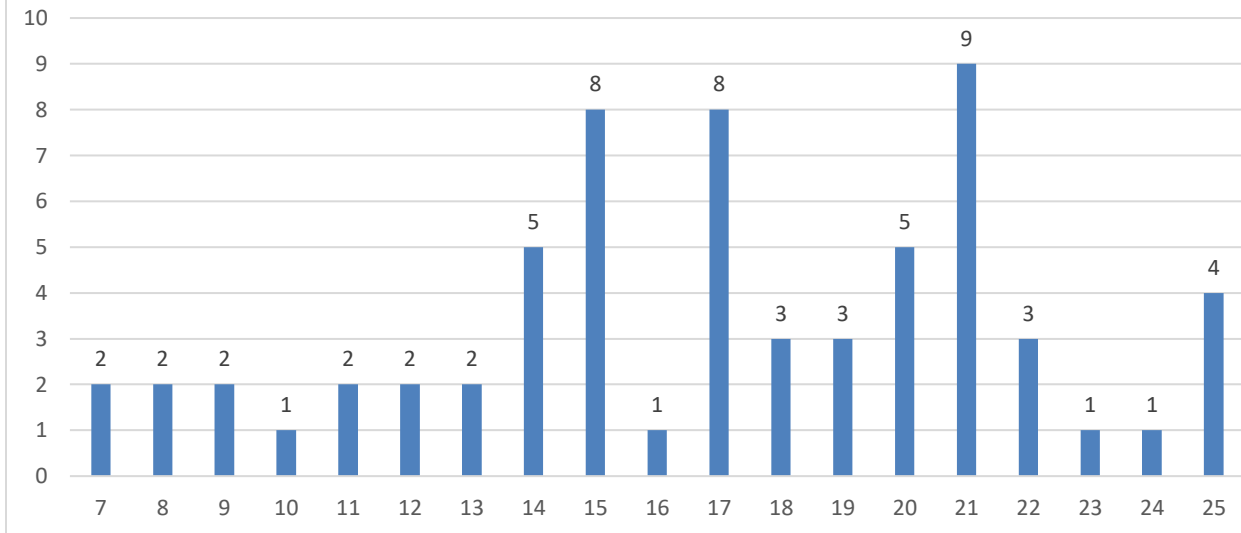
Covid-19 Cases by Age Group  
Andover  
12/27/2020 to 1/16/2021



Covid-19 Cases by Age Group  
Andover  
12/27/2020 to 1/16/2021



Covid-19 Cases Ages 7 to 25 Years  
Andover  
1/3/2021 to 1/9/2021



Age Range	12/27/2020	1/3/2021	1/10/2021
0 to 5	6	3	4
6 to 10	7	7	7
11 to 15	6	18	7
16 to 20	16	20	18
21 to 25	13	18	12
26 to 30	12	7	6

Age Range	12/27/2020	1/3/2021	1/10/2021
0 to 10	13	10	11
11 to 20	22	38	25
21 to 30	25	25	18
31 to 40	22	15	9
41 to 50	26	26	13
51 to 60	23	25	23
61 to 70	14	11	9
71 to 80	4	7	7
81 to 90	9	5	2
>90 Years	1	2	1

**Observations:**

- Testing around the Holidays has been difficult to follow due to those holidays; it would appear that there might have been an expected bump in cases following Christmas.

- The 29 cases on 1/11/2021 and 1/19/2021 reflect the first day back from a weekend, indicating that positive cases may have chosen to delay testing until after the weekend.
- The week of January 3<sup>rd</sup> shows an increase in cases from ages 11 through 25 years. The final bar graph breaks those cases down by year, showing a correlation with high school aged students, as well as those aged 21 years.
- 256 of the 509 cases in this review period are from 98 households (that is 50% of the cases).
- In reviewing the address records, it would appear that there may have been several neighborhood holiday gatherings; there are households on short streets that have positive cases very close in dates.
- For the week of December 27<sup>th</sup>, the average daily case count was 22.7 cases per day; the average daily case count for the week of January 3<sup>rd</sup> was 23.6 cases per day; the average daily case count for the week of January 10<sup>th</sup> is 16.9 cases per day.