



TOWN OF ANDOVER

Town Offices
 36 Bartlet Street
 Andover, MA 01810
 (978) 623-8200
 www.andoverma.gov

COVID-19 DATA REVIEW February 6, 2021

Data from Weekly Covid-19 Dashboard 2/4/2021

Community	Total Case Count	Case Count (Last 14 Days)	Avg. Daily Incident Rate per 100,000 (last 14 days)	Relative Change in Case Counts	Total Tests	Total Test (last 14 days)	Total Positive Tests (last 14 days)	% Positivity (Last 14 Days)	Change in Percent Positivity
Andover	2040	187	37.0	Lower	67929	6003	216	3.60%	Lower
Haverhill	6462	542	58.7	Lower	110667	9805	686	7.00%	Lower
Lawrence	17011	989	80.5	Lower	167703	12667	1460	11.53%	Lower
Lynnfield	923	86	53.0	Lower	21826	2028	104	5.13%	Higher
Methuen	6083	410	54.4	Lower	89791	6801	556	8.18%	Lower
N. Andover	2329	195	46.0	Lower	102404	7975	231	2.90%	Lower
N. Reading	1031	104	44.6	Higher	26384	2415	110	4.55%	Higher
Reading	1563	157	40.5	Lower	41979	4054	178	4.39%	Lower
Tewksbury	496	58	45.9	Lower	11039	1002	67	6.69%	Lower
Wilmington	1720	115	33.6	Lower	32401	2796	138	4.94%	Lower

Andover Weekly Data

Date	Total Case Count	Case Count (Last 14 Days)	Avg. Daily Incident Rate per 100,000 (last 14 days)	Relative Change in Case Counts	Total Tests	Total Test (last 14 days)	Total Positive Tests (last 14 days)	% Positivity (Last 14 Days)	Change in Percent Positivity
12/31/2020	NO	DATA	THIS	WEEK	---	---	---	---	---
1/7/2021	1584	286	56.6	Higher	55714	4780	331	6.92%	Higher
1/14/2021	1748	331	65.6	Higher	58725	5319	379	7.13%	Higher
1/21/2021	1852	284	56.2	Lower	61765	6088	324	5.32%	Lower
1/28/2021	1951	209	41.4	Lower	64765	6042	241	3.99%	Lower
2/4/2021	2040	187	37.0	Lower	67929	6003	216	3.60%	Lower
State 2/4/2021	504564	47659	48.9	Lower	13874158	1299378	56149	4.32%	Lower

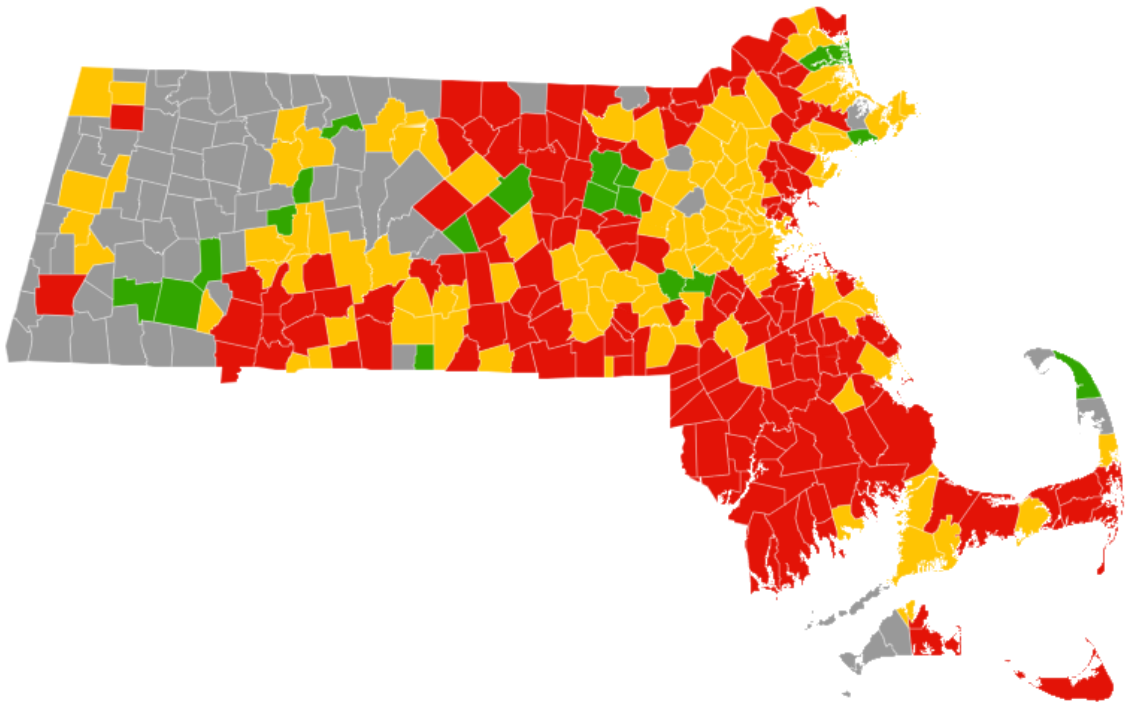
This table contains state-wide data & is intended to provide the reader with background on what type of cluster events are being noted.

Exposure Setting	(Identified 1/3 – 1/30)		
	Clusters	Confirmed Cases	Close Contacts
24/7 Congregate Settings	38	206	33
Child Care	142	464	708
Colleges & Universities	15	67	40
Corrections	1	2	5
Hospitals	13	89	46
Household	19,619	50,250	----
Industrial Settings	14	102	63
K-12 Schools	26	117	192
Long Term Care Facilities	63	590	---
Offices	5	23	10
Organized Athletics/Camps	38	133	263
Other	.	.	.
Other Food Establishments	5	18	15
Other Healthcare	12	32	56
Other Workplaces	10	38	19
Places of Worship	2	17	1
Recreation/Cultural	1	20	1
Restaurants & Food Courts	18	75	26
Retail & Services	15	72	34
Senior Living	27	180	25
Shelters	3	25	8
Social Gatherings	17	108	38
Travel & Lodging	.	.	.
TOTAL	20,084	52,628	1,583

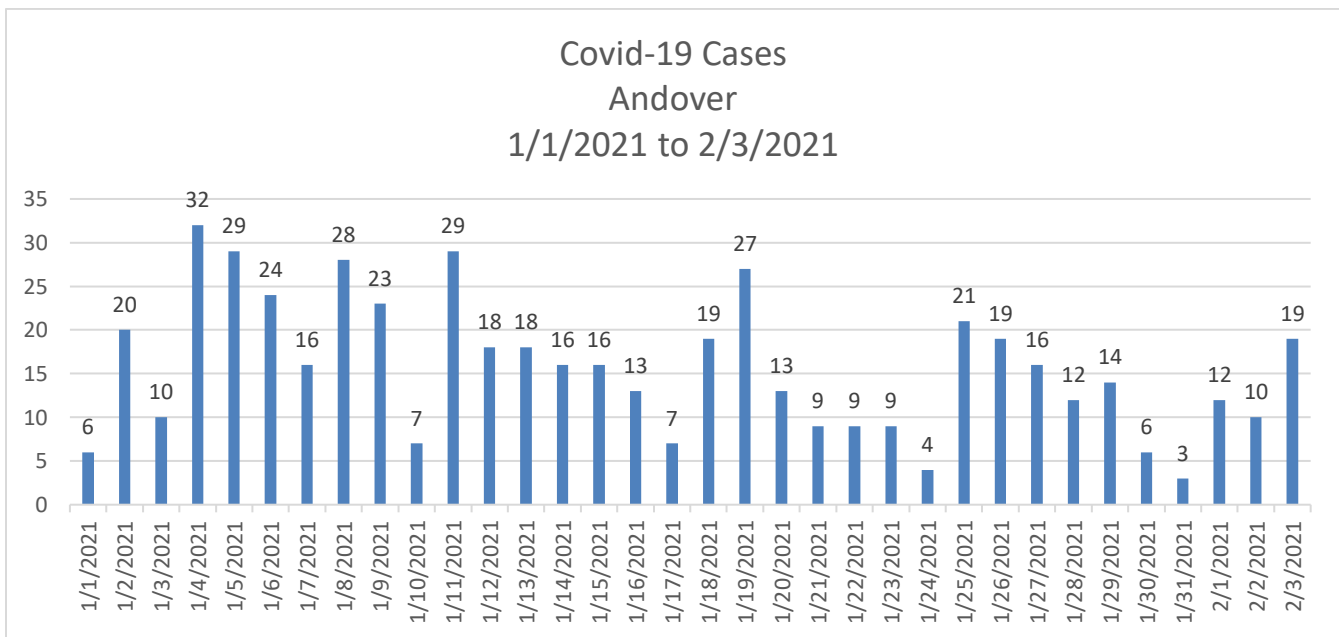
Observations:

- Andover’s Standardized Incidence Rate and 14 Day Positivity Rate have fallen for 4 consecutive weeks.
- Half of the comparable communities have moved from the red category to yellow.
- Andover’s 14 day total test count has remained steady for three weeks.
- Statewide, beyond household clusters, day care settings are the next highest site of clusters.
- Organized athletics continue to be a source of clusters state wide; we continue to see clusters around ice hockey, and worry that basketball will also be a source.

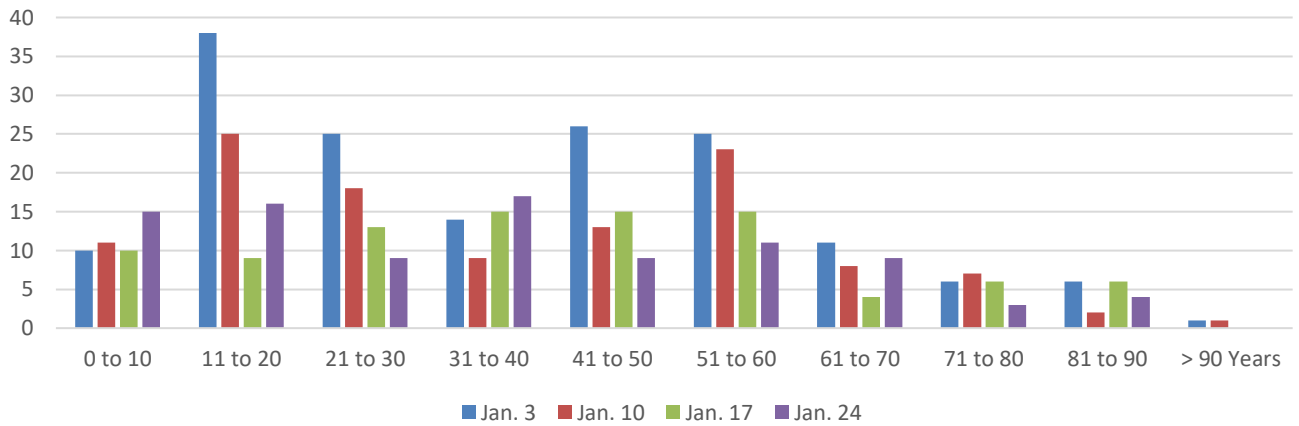
This map is from <https://www.wcvb.com/app/massachusetts-coronavirus-covid-19-vaccine-charts-map-data-daily-updates/35319607> on 2/6/2021.



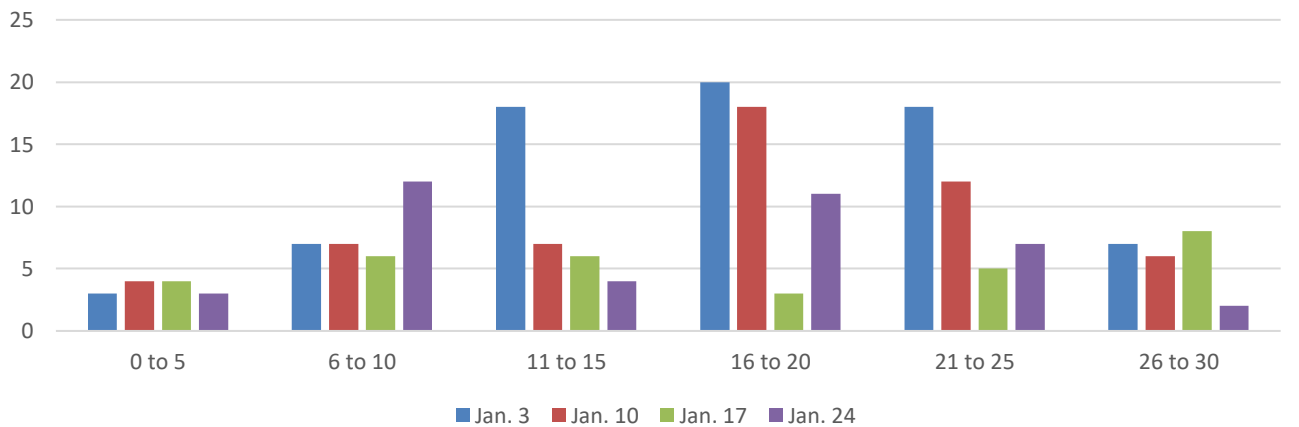
The following data was taken from MAVEN on 2/5/2021, for the dates 1/1/2021 through 2/4/2021.



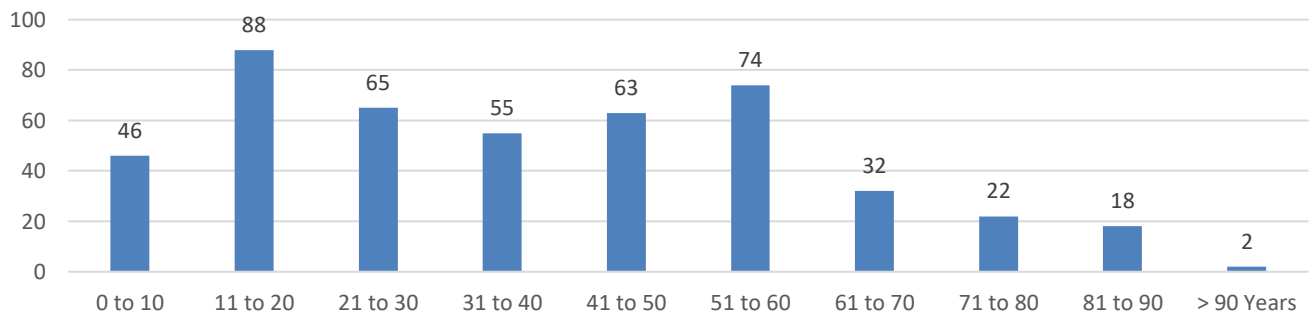
Covid-19 Cases by Age Group Jan. 3 Jan. 10 Jan. 17 Jan. 24 Andover
1/3/2021 to 1/30/2021



Covid-19 Cases by Age Group
Andover
1/3/2021 to 1/30/2021

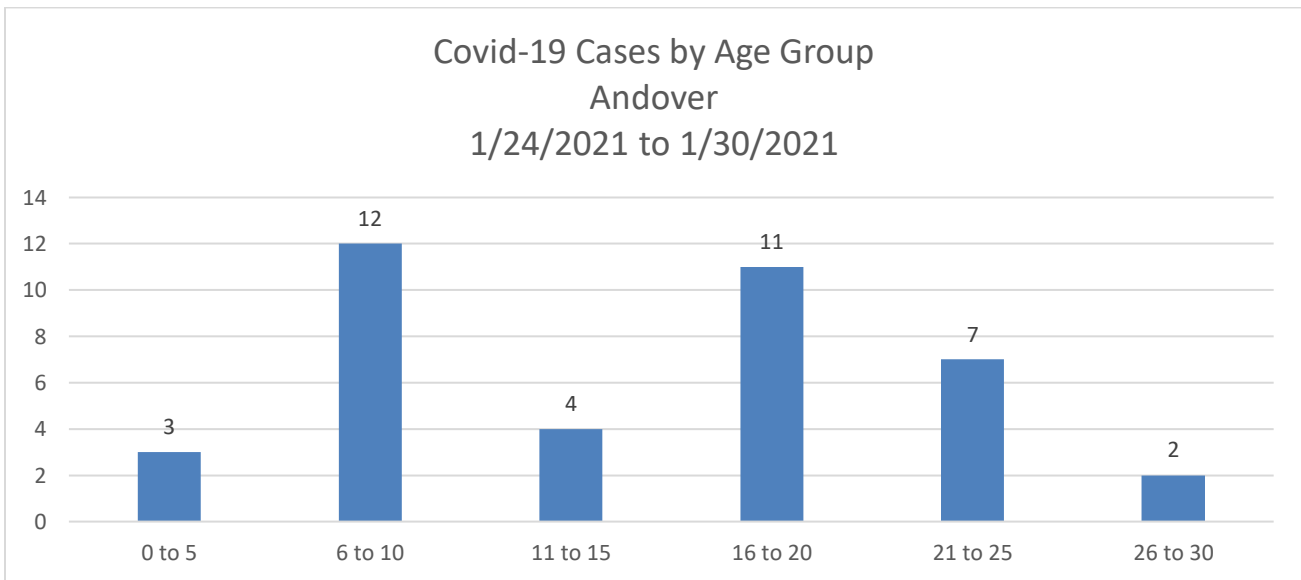


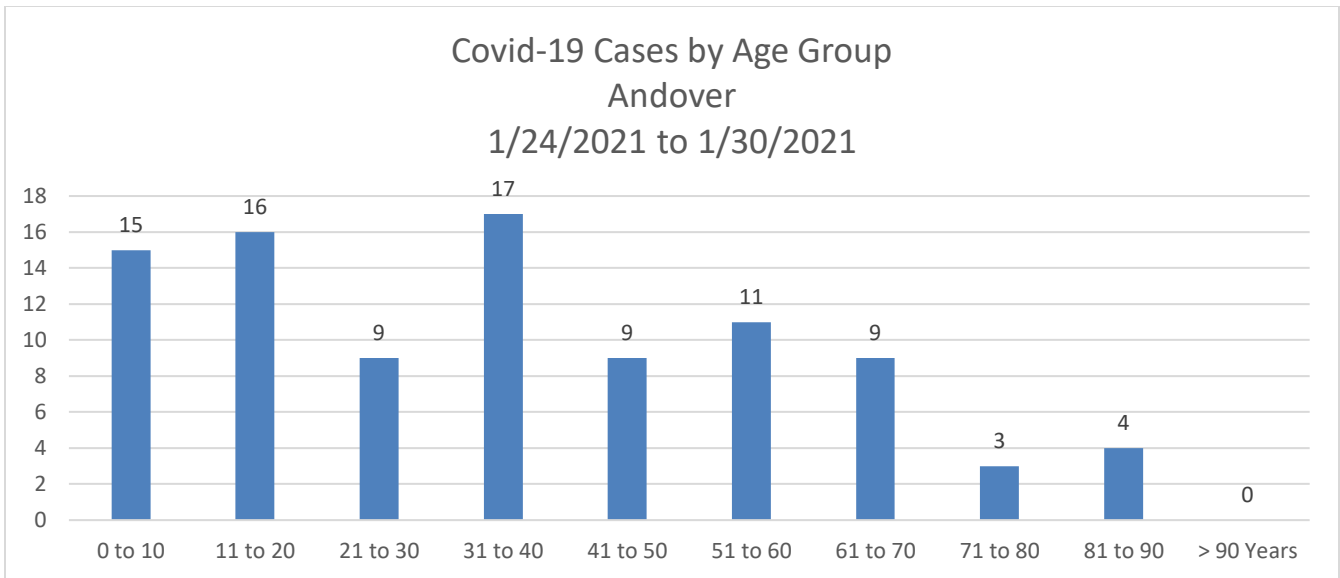
Covid-19 Cases
Andover
1/3/2021 to 1/30/2021



Age Range	Jan. 3	Jan. 10	Jan. 17	Jan. 24
0 to 5	3	4	4	3
6 to 10	7	7	6	12
11 to 15	18	7	6	4
16 to 20	20	18	3	11
21 to 25	18	12	5	7
26 to 30	7	6	8	2

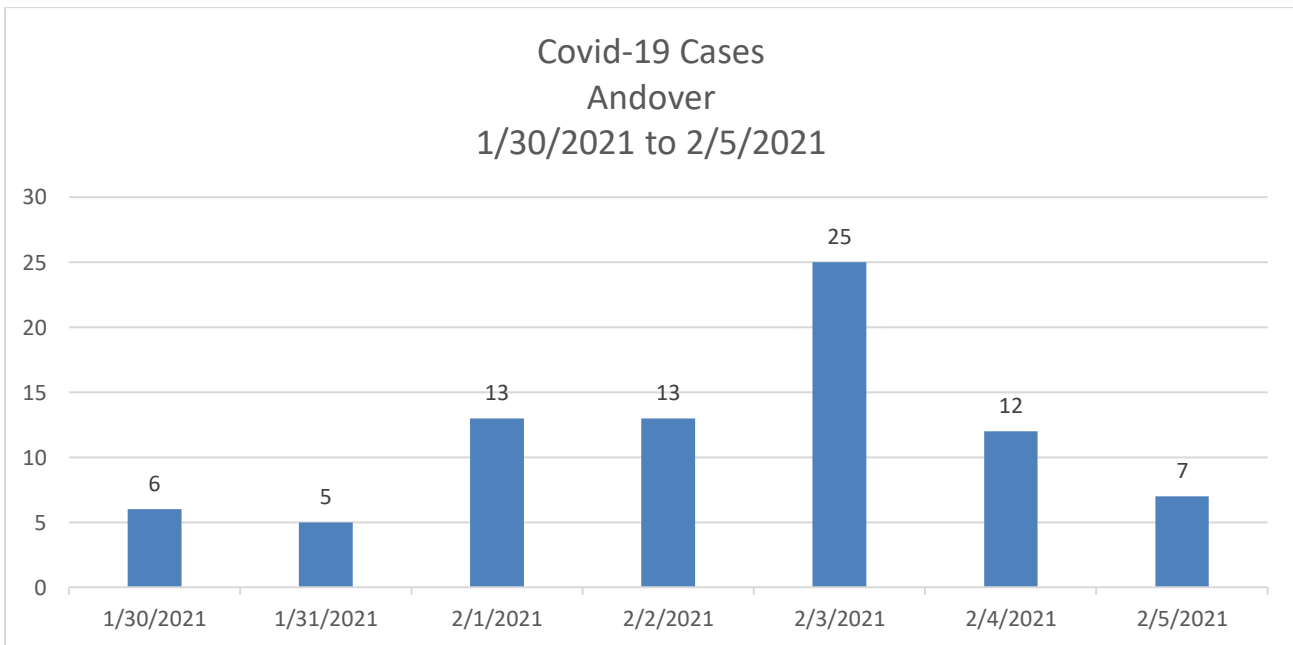
Age Range	Jan. 3	Jan. 10	Jan. 17	Jan. 24
0 to 10	10	11	10	15
11 to 20	38	25	9	16
21 to 30	25	18	13	9
31 to 40	14	9	15	17
41 to 50	26	13	15	9
51 to 60	25	23	15	11
61 to 70	11	8	4	9
71 to 80	6	7	6	3
81 to 90	6	2	6	4
> 90 Years	1	1	0	0
Total	162	117	93	93

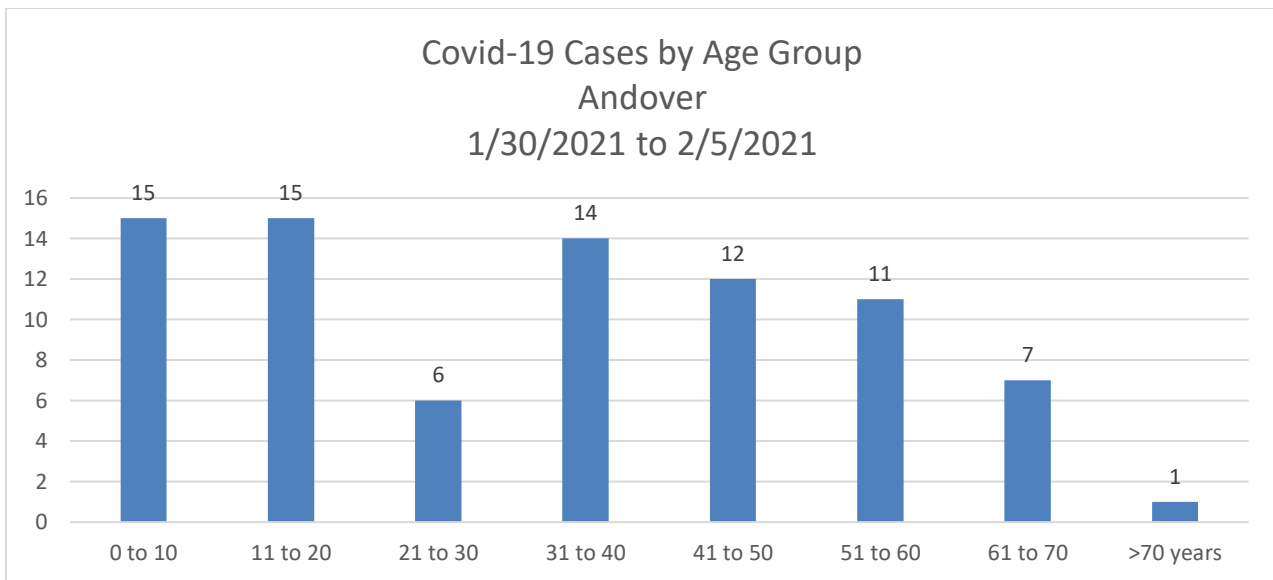




Observations:

- There have been 4 cases associated with Merrimack College, all in the last week as students returned to campus, and from 4 different residential areas.
- There have been 6 cases at Atria Marland Place in January.
- Spikes in cases on January 11, 19, and 25 reflect testing that occurred on the first work day of those three weeks; the cases then decreased through the week.
- The week of January 3rd shows high case numbers as compared to the following weeks.
- For the entire month, persons from 11 to 20 years had the most number of cases (caution, this observation is not standardized).
- For the last week of January, the age groups of 0 to 20, and 31 to 40 had the highest number of cases.





The last two graphs show numbers for the last 7 days, and reflect the same trend of the last week of January; the age group 21 to 30 is lower than would be expected. I am unclear as to why there is a spike in positives on 2/3/2021, and we need to understand that the numbers from 2/4/2021 and 2/5/2021 are likely incomplete since lab results may not have been returned yet. 9 of the 25 cases on 2/3/2021 are school aged persons.