



TOWN OF ANDOVER

Town Offices
 36 Bartlet Street
 Andover, MA 01810
 (978) 623-8200
 www.andoverma.gov

COVID-19 DATA REVIEW February 13, 2021

Data from Weekly Covid-19 Dashboard 2/13/2021

Community	Total Case Count	Case Count (Last 14 Days)	Avg. Daily Incident Rate per 100,000 (last 14 days)	Relative Change in Case Counts	Total Tests	Total Test (last 14 days)	Total Positive Tests (last 14 days)	% Positivity (Last 14 Days)	Change in Percent Positivity
Andover	2129	181	35.8	Higher	70731	5709	205	3.59%	Higher
Haverhill	6650	397	43.0	Lower	114766	8615	504	5.85%	Lower
Lawrence	17300	716	58.3	Lower	172664	10753	1027	9.55%	Lower
Lynnfield	948	61	37.6	Lower	22743	1822	79	4.34%	Lower
Methuen	6206	299	39.7	Lower	92659	5926	395	6.67%	Lower
N. Andover	2395	156	36.8	Lower	109171	11057	180	1.63%	Lower
N. Reading	1091	118	50.6	Higher	27591	2357	123	5.22%	Higher
Reading	1622	129	33.3	Lower	43745	3802	145	3.81%	Lower
Tewksbury	2700	138	32.0	Lower	61285	5032	159	3.16%	Lower
Wilmington	1761	79	23.1	Lower	33775	2596	95	3.66%	Lower

Andover Weekly Data

Date	Total Case Count	Case Count (Last 14 Days)	Avg. Daily Incident Rate per 100,000 (last 14 days)	Relative Change in Case Counts	Total Tests	Total Test (last 14 days)	Total Positive Tests (last 14 days)	% Positivity (Last 14 Days)	Change in Percent Positivity
1/7/2021	1584	286	56.6	Higher	55714	4780	331	6.92%	Higher
1/14/2021	1748	331	65.6	Higher	58725	5319	379	7.13%	Higher
1/21/2021	1852	284	56.2	Lower	61765	6088	324	5.32%	Lower
1/28/2021	1951	209	41.4	Lower	64765	6042	241	3.99%	Lower
2/4/2021	2040	187	37.0	Lower	67929	6003	216	3.60%	Lower
2/11/2021	2129	181	35.8	Higher	70731	5709	205	3.59%	Higher
State 2/11/2021	521045	37518	38.5	Lower	14520845	1293888	43966	3.40%	Lower

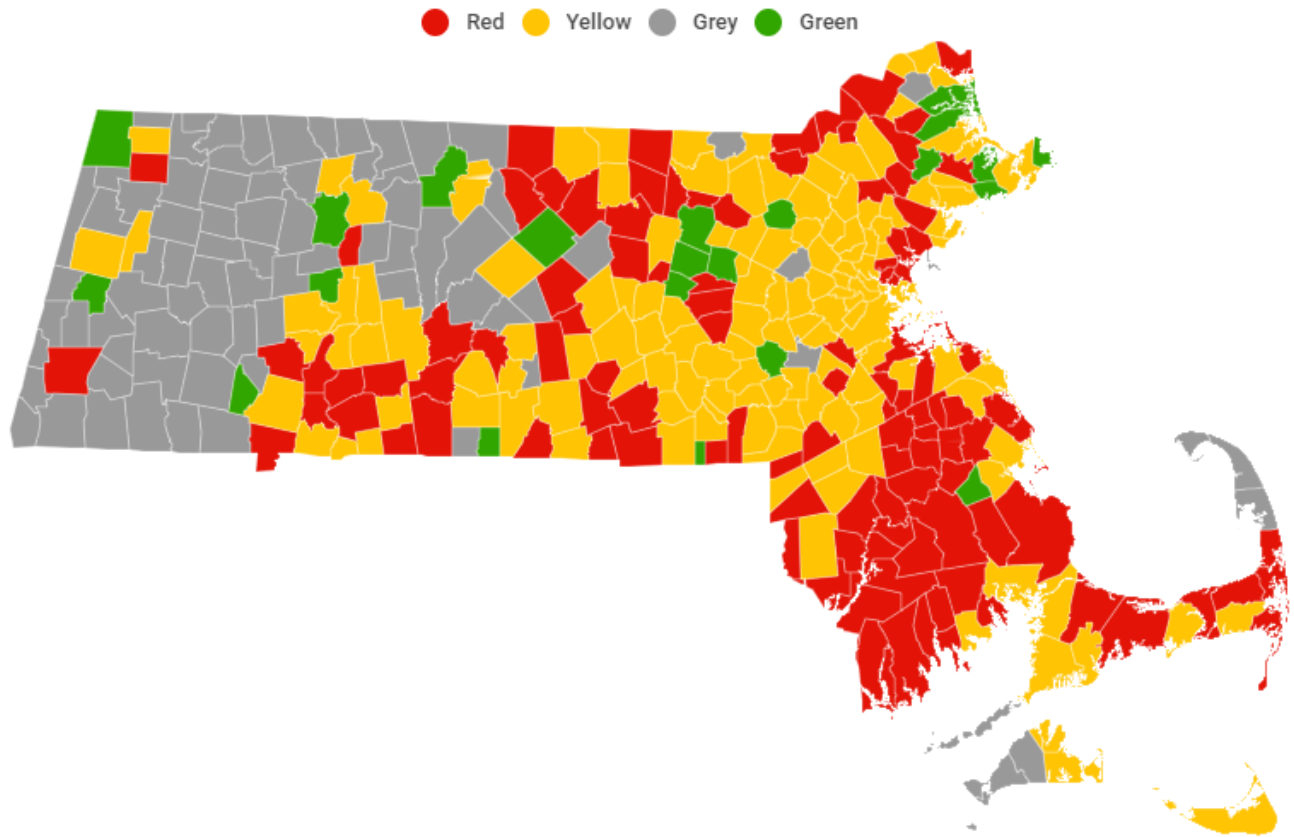
This table contains state-wide data & is intended to provide the reader with background on what type of cluster events are being noted.

Exposure Setting	New Clusters		
	(Identified 1/10 – 2/6)		
	Clusters	Confirmed Cases	Close Contacts
24/7 Congregate Settings	28	95	22
Child Care	112	368	543
Colleges & Universities	28	144	57
Corrections	1	11	.
Hospitals	5	26	.
Household	14,595	37,192	---
Industrial Settings	9	32	6
K-12 Schools	23	97	187
Long Term Care Facilities	47	258	---
Offices	4	11	4
Organized Athletics/Camps	40	162	227
Other	.	.	.
Other Food Establishments	5	24	16
Other Healthcare	7	19	78
Other Workplaces	7	25	19
Places of Worship	1	3	.
Recreation/Cultural	5	58	1
Restaurants & Food Courts	17	69	31
Retail & Services	16	60	7
Senior Living	23	104	17
Shelters	2	22	8
Social Gatherings	5	31	12
Travel & Lodging	.	.	.
TOTAL	14,980	38,811	1,235

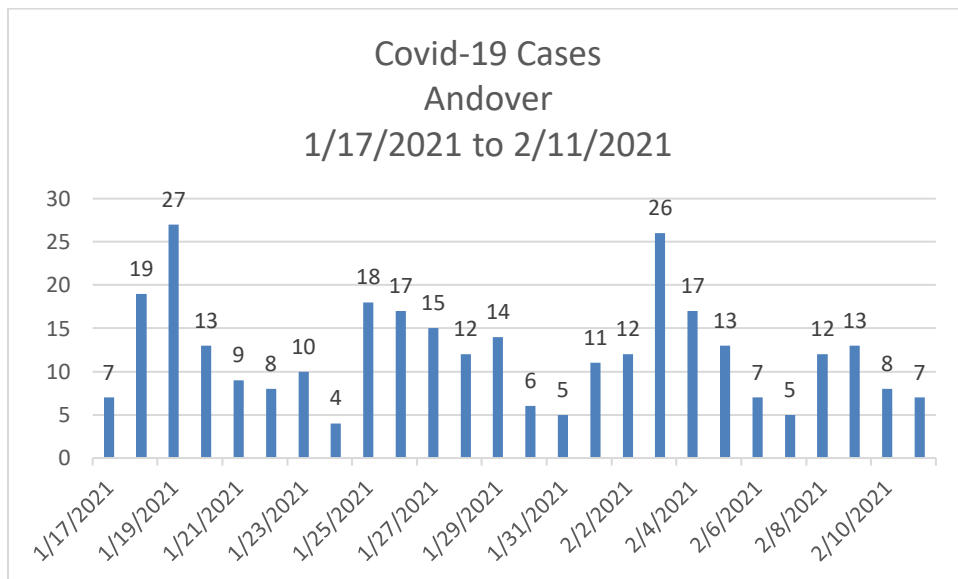
Observations:

- The three cities in our comparison group continue to be in a high risk group; North Reading as well.
- Andover’s standardized case rate has dropped for the previous 5 weeks.
- Andover’s positivity rate has stabilized for the last three weeks.
- State-wide cluster data continues to show household spread, as well as clusters associated with Child Care and athletics. It should be noted that Andover has a sport-related cluster in the past week, discussed below.

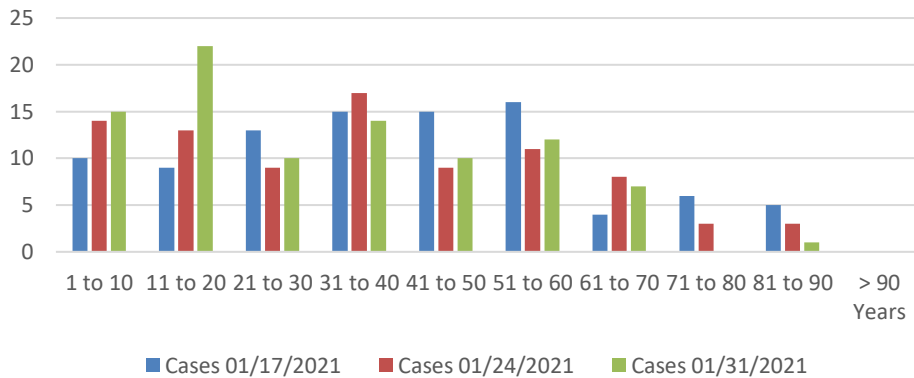
This map is from <https://www.wcvb.com/app/massachusetts-coronavirus-covid-19-vaccine-charts-map-data-daily-updates/35319607> on 2/13/2021.



The following data was taken from MAVEN on 2/13/2021, for the dates 1/17/2021 through 2/11/2021.

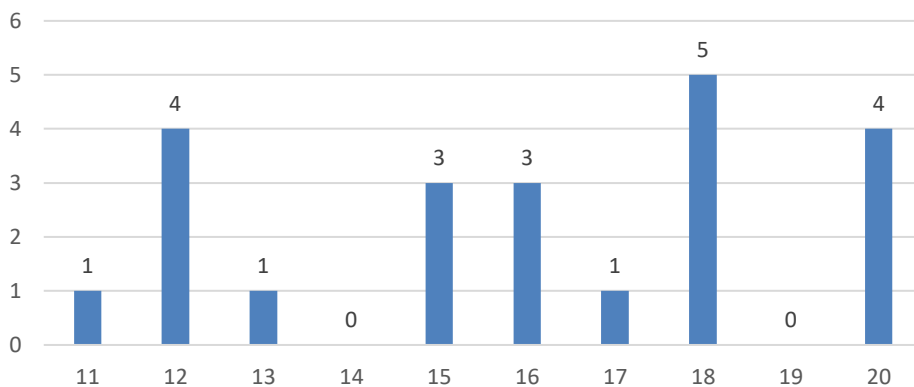


**Covid-19 Cases by Age Range
Andover
1/17/2021 to 2/6/2021**



Age Range	Cases 01/17/2021	Cases 01/24/2021	Cases 01/31/2021
1 to 10	10	14	15
11 to 20	9	13	22
21 to 30	13	9	10
31 to 40	15	17	14
41 to 50	15	9	10
51 to 60	16	11	12
61 to 70	4	8	7
71 to 80	6	3	0
81 to 90	5	3	1
> 90 Years	0	0	0

**Covid-19 Cases by Age (Years)
Andover
1/31/2021 to 2/6/2021**



Observations:

- Cases have been dropping over the past few weeks, and we have now completed our third week in the moderate risk, or yellow category.
- Case distribution across age groups appear to be equal, although the age group of 11 to 20 years show an increase for the week of January 31st. This has a link to a local sports team that is part of a cluster of multiple cases; the entire team is in quarantine.
- In this time period, there are 5 cases associated with Atria Marland Place; there is only one case there in the past week.
- 19 cases in the time period are tied to a cluster at one single apartment complex.
- 4 cases are associated with Merrimack College.