



# TOWN OF ANDOVER

Town Offices  
 36 Bartlet Street  
 Andover, MA 01810  
 (978) 623-8200  
 www.andoverma.gov

## COVID-19 DATA REVIEW February 19, 2021

### Data from Weekly Covid-19 Dashboard 2/18/2021

Community	Total Case Count	Case Count (Last 14 Days)	Avg. Daily Incident Rate per 100,000 (last 14 days)	Relative Change in Case Counts	Total Tests	Total Test (last 14 days)	Total Positive Tests (last 14 days)	% Positivity (Last 14 Days)	Change in Percent Positivity
Andover	2176	152	30.1	Lower	73317	5577	177	3.17%	Lower
Haverhill	6768	317	34.3	Lower	118252	7530	393	5.22%	Lower
Lawrence	17545	583	47.5	Lower	177364	9746	799	8.20%	Lower
Lynnfield	975	51	31.4	Lower	23606	1793	61	3.40%	Lower
Methuen	6326	253	33.6	Lower	95493	5602	318	5.68%	Lower
N. Andover	2442	121	28.5	Lower	115370	13125	139	1.06%	Lower
N. Reading	1130	113	48.5	Lower	28683	2343	118	5.04%	Lower
Reading	1666	106	27.4	Lower	45582	3620	118	3.26%	Lower
Tewksbury	2774	153	35.5	Higher	63394	5026	169	3.36%	Higher
Wilmington	1799	77	22.5	Lower	35065	2590	84	3.24%	Lower

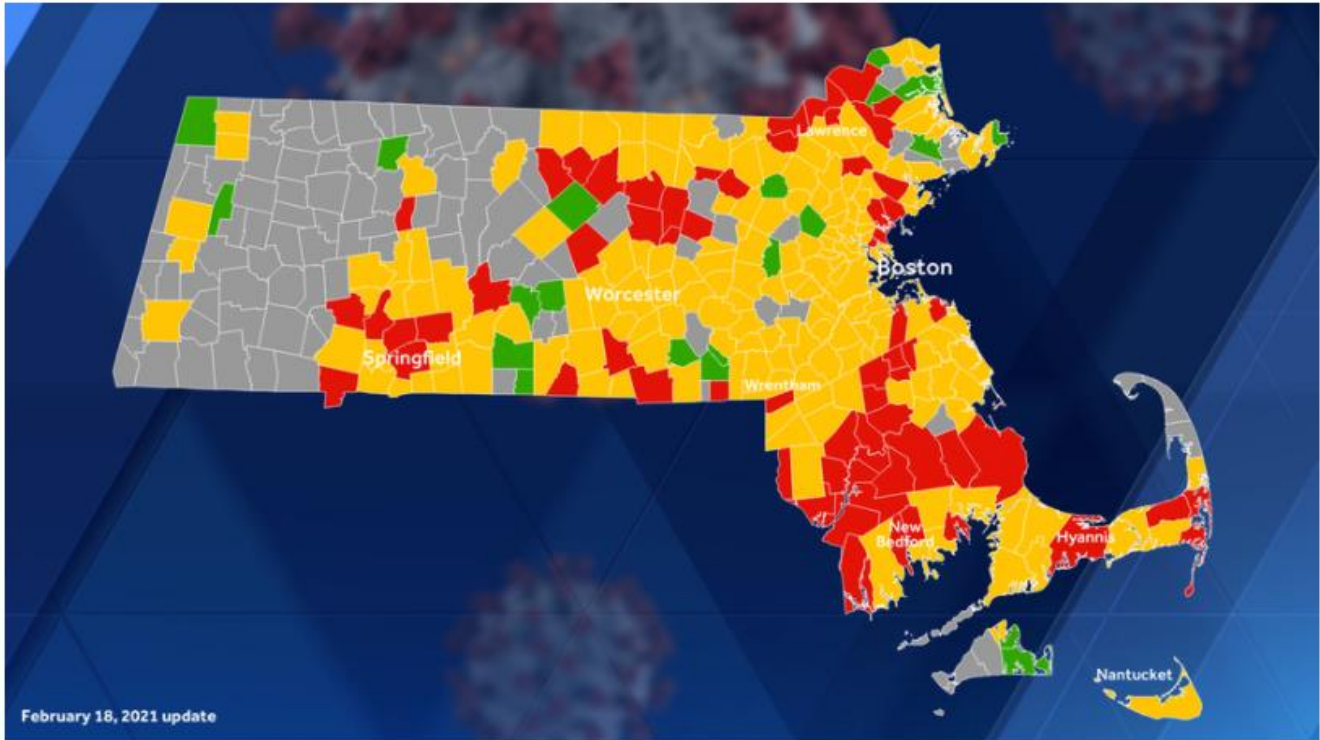
### Andover Weekly Data

Date	Total Case Count	Case Count (Last 14 Days)	Avg. Daily Incident Rate per 100,000 (last 14 days)	Relative Change in Case Counts	Total Tests	Total Test (last 14 days)	Total Positive Tests (last 14 days)	% Positivity (Last 14 Days)	Change in Percent Positivity
1/14/2021	1748	331	65.6	Higher	58725	5319	379	7.13%	Higher
1/21/2021	1852	284	56.2	Lower	61765	6088	324	5.32%	Lower
1/28/2021	1951	209	41.4	Lower	64765	6042	241	3.99%	Lower
2/4/2021	2040	187	37.0	Lower	67929	6003	216	3.60%	Lower
2/11/2021	2129	181	35.8	Higher	70731	5709	205	3.59%	Higher
2/18/2021	2176	152	30.1	Lower	73317	5577	177	3.17%	Lower
State 2/18/2021	533024	29269	30.0	Lower	15140864	1261833	34108	2.70%	Lower

This table contains state-wide data & is intended to provide the reader with background on what type of cluster events are being noted.

Exposure Setting	New Clusters (Identified 1/17 – 2/13)		
	Clusters	Confirmed Cases	Close Contacts
24/7 Congregate Settings	19	63	16
Child Care	93	277	473
Colleges & Universities	39	256	76
Corrections	1	11	.
Hospitals	3	11	.
Household	11,645	29,691	---
Industrial Settings	5	18	2
K-12 Schools	18	72	117
Long Term Care Facilities	38	169	---
Offices	7	23	5
Organized Athletics/Camps	38	169	272
Other	.	.	.
Other Food Establishments	3	18	23
Other Healthcare	7	15	43
Other Workplaces	8	29	19
Places of Worship	3	27	1
Recreation/Cultural	5	42	.
Restaurants & Food Courts	12	42	29
Retail & Services	10	31	9
Senior Living	16	93	7
Shelters	.	.	.
Social Gatherings	8	58	6
Travel & Lodging	.	.	.
<b>TOTAL</b>	<b>11,978</b>	<b>31,115</b>	<b>1,098</b>

This map is from <https://www.wcvb.com/article/massachusetts-coronavirus-covid-19-community-spread-risk-map-color-coded/33646711> on 2/19/2021.

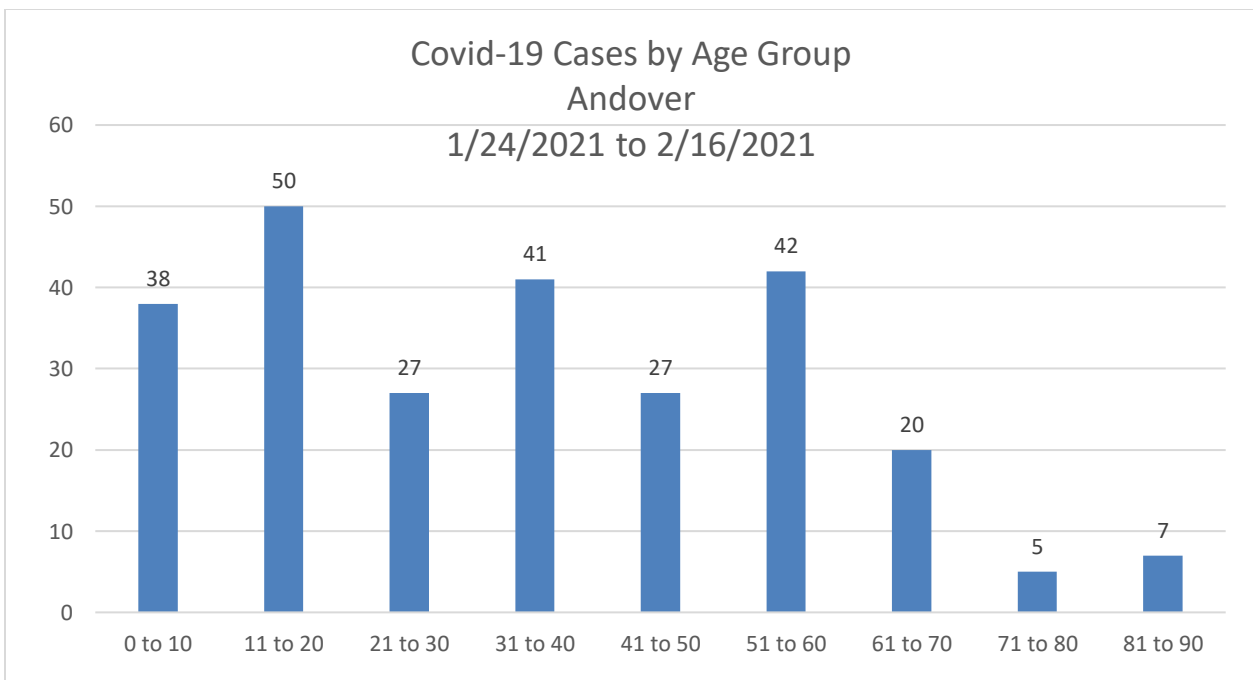
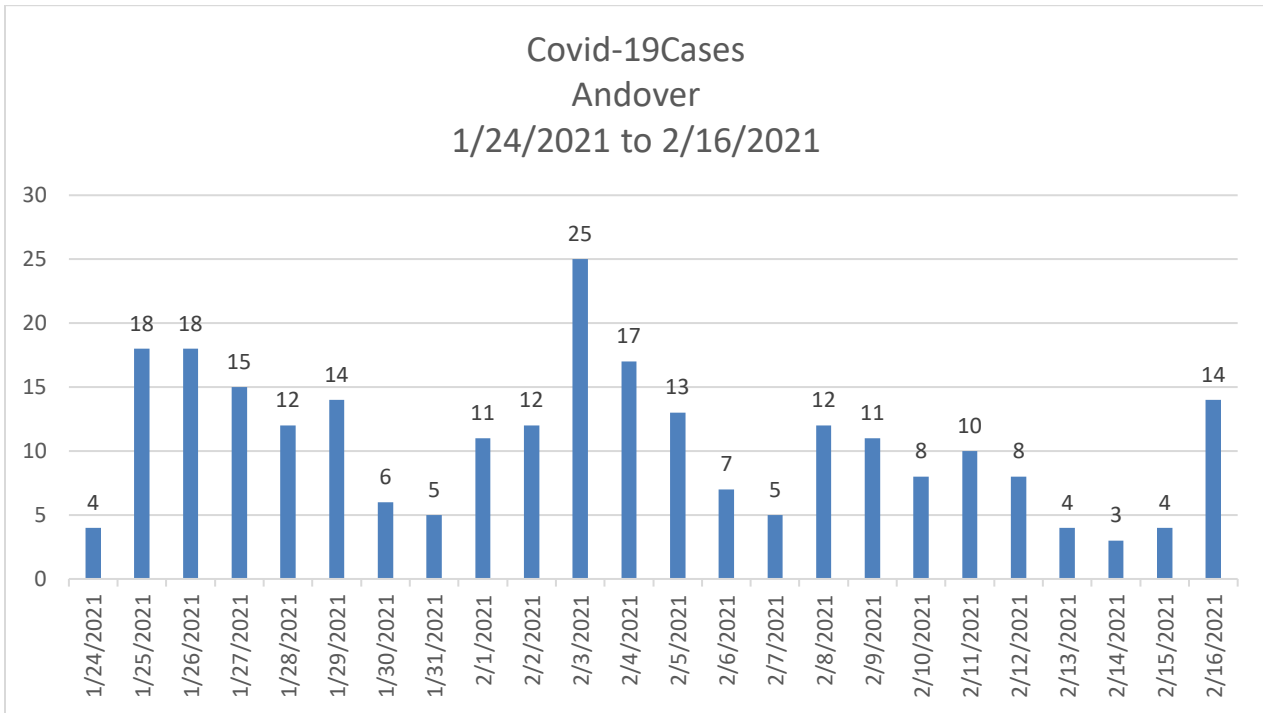


COVID-19 risk map, Feb. 18, 2021 SOURCE: WCVB

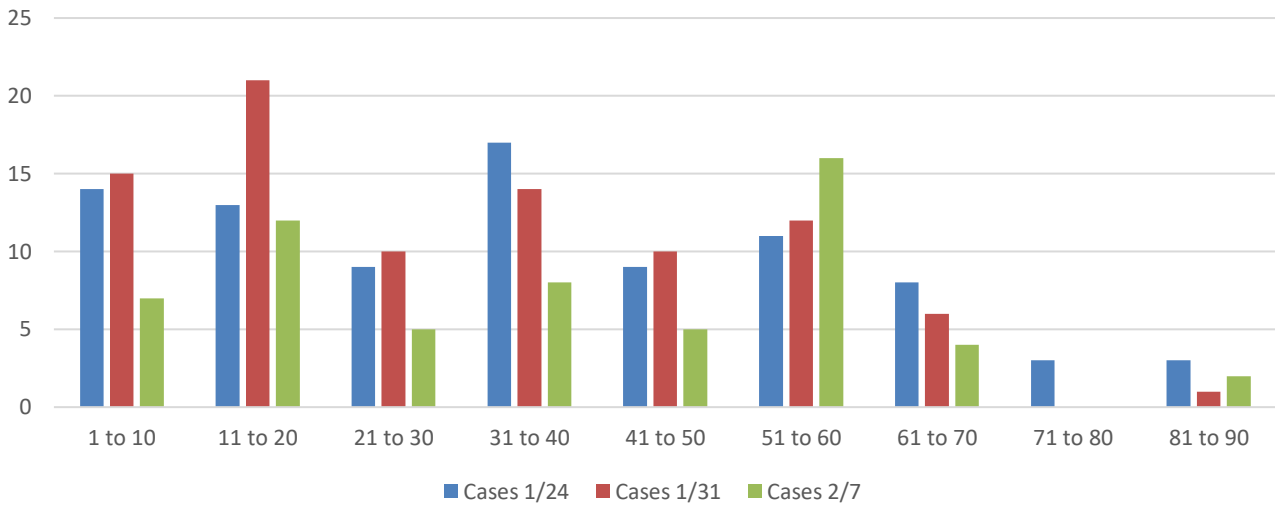
**Observations:**

- North Andover’s % positivity rate is artificially low, as the Merrimack College tests are reported for that community.
- Our standardized daily incident rate continues to drop, along with the 5 positivity rate.
- There were about 500 fewer tests performed in the last report than two weeks prior; we may see an increase in tests performed as people return from their February vacation travels.
- State-wide, clusters in child care settings are the highest current cluster group. Long term care settings and sports exposures come in next.

The following data was taken from MAVEN on 2/18/2021, for the dates 1/24/2021 through 2/16/2021.



Covid-19 Cases by Week & Age  
Andover  
1/24/2021 to 2/13/2021



Covid-19 Cases by Week & Age  
Andover  
1/24/21 to 2/13/2021



Age	Cases 1/24	Cases 1/31	Cases 1/7
0 to 5	2	8	1
6 to 10	12	7	6
11 to 15	3	9	6
16 to 20	10	13	6
21 to 25	7	5	4
26 to 30	2	5	1

Age	Cases 1/24	Cases 1/31	Cases 1/7
1 to 10	14	15	7
11 to 20	13	21	12
21 to 30	9	10	5
31 to 40	17	14	8
41 to 50	9	10	5
51 to 60	11	12	16
61 to 70	8	6	4
71 to 80	3	0	0
81 to 90	3	1	2

**Observations:**

- There is a spike in cases for January 23<sup>rd</sup>; 13 of those 25 cases are in persons under the age of 21. There does not seem to be a pattern, although 7 of those cases come from 2 homes.
- 37% of the 235 cases in this three week look back are aged 20 and under.
- During the week of 1/31/2021, there was a spike in cases aged 11 to 20 years; a narrower view of that data shows a spike in the ages of 16 to 20. This is likely associated with a sports related cluster that is known to us.
- During the week of 2/7/2021, the highest number of cases is in persons aged 51 to 60 years. There is no apparent cause for this.
- There were 4 cases associated with Merrimack College, in 4 different residence halls. The last case was diagnosed on February 3<sup>rd</sup>, more than two weeks ago.