



TOWN OF ANDOVER

Town Offices
 36 Bartlet Street
 Andover, MA 01810
 (978) 623-8200
 www.andoverma.gov

COVID-19 DATA REVIEW

April 9, 2021

Data from Weekly Covid-19 Dashboard 4/1/2021

Community	Total Case Count	Case Count (Last 14 Days)	Avg. Daily Incident Rate per 100,000 (last 14 days)	Relative Change in Case Counts	Total Tests	Total Test (last 14 days)	Total Positive Tests (last 14 days)	% Positivity (Last 14 Days)	Change in Percent Positivity
Andover	2570	136	26.9	Higher	90847	4499	161	3.58%	Higher
Haverhill	7572	222	24.0	Higher	141887	6804	256	3.76%	No Change
Lawrence	18906	494	40.2	Higher	208163	8764	595	6.79%	Higher
Lynnfield	1149	42	25.9	No Change	29834	1629	46	2.82%	Lower
Methuen	7046	240	31.8	Higher	114453	5087	285	5.60%	Higher
N. Andover	2790	121	28.5	No Change	157024	11765	134	1.14%	No Change
N. Reading	1327	66	28.3	Lower	35761	1931	74	3.83%	No Change
Reading	1973	76	19.6	Lower	57156	3090	82	2.65%	Lower
Tewksbury	3091	142	32.9	Higher	78164	4230	155	3.66%	Higher
Wilmington	2055	78	22.8	Lower	43900	2382	81	3.40%	Lower

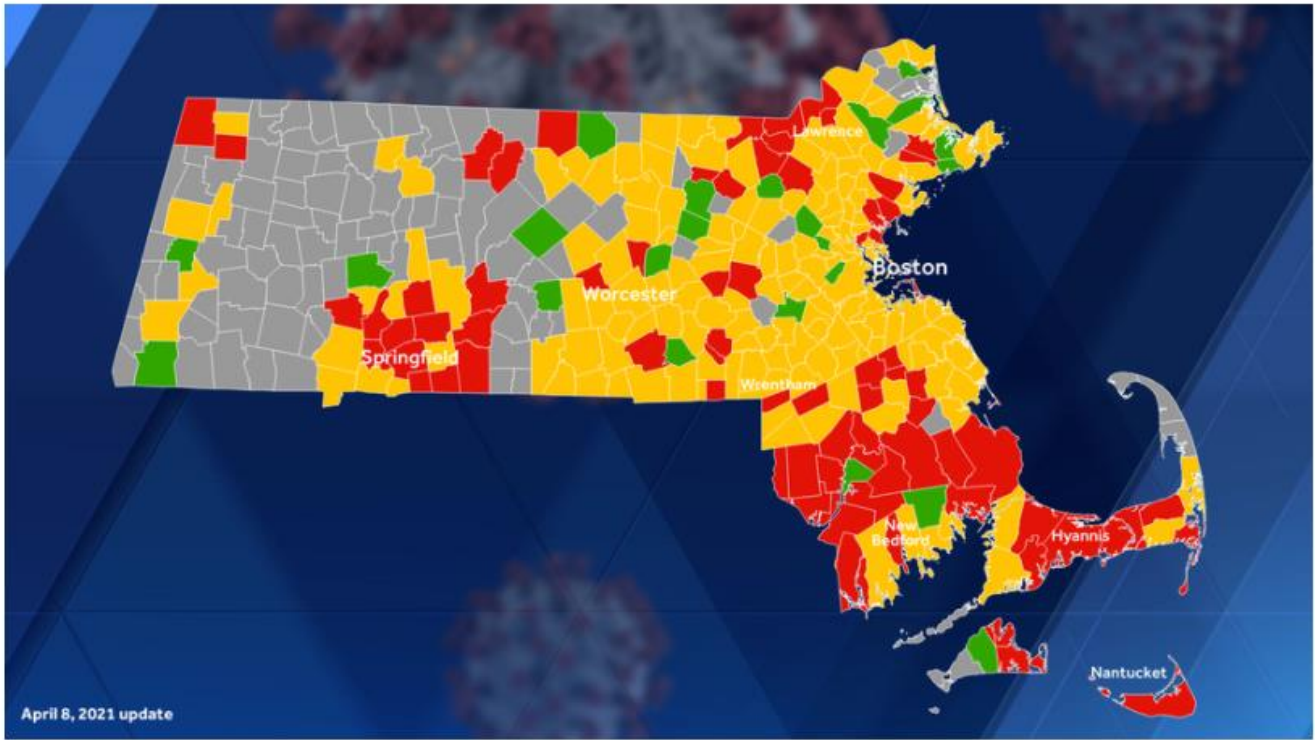
Andover Weekly Data

Date	Total Case Count	Case Count (Last 14 Days)	Avg. Daily Incident Rate per 100,000 (last 14 days)	Relative Change in Case Counts	Total Tests	Total Test (last 14 days)	Total Positive Tests (last 14 days)	% Positivity (Last 14 Days)	Change in Percent Positivity
3/4/2021	2260	90	17.8	Lower	78884	5183	107	2.06%	Lower
3/11/2021	2298	74	14.7	Lower	81288	5191	87	1.68%	Lower
3/18/2021	2355	85	16.8	Higher	83699	4662	95	2.04%	Higher
3/25/2021	2409	110	21.8	Higher	86062	4434	119	2.68%	Higher
4/1/2021	2478	118	23.4	Higher	88491	4464	133	2.98%	Higher
4/8/2021	2570	136	26.9	Higher	90847	4499	161	3.58%	Higher
State 4/9/2021	611,825	27,379	28.1	Higher	19,431,439	1,211,624	30775	2.54%	Higher

This table contains state-wide data & is intended to provide the reader with background on what type of cluster events are being noted (3/14/2021 to 4/3/2021).

Exposure Setting	New Clusters_ Clusters	New Clusters_ Confirmed Cases	New Clusters_ Close Contacts
24/7 Congregate Settings	1	2	1
Child Care	106	368	372
Colleges & Universities	22	151	47
Corrections	0	0	0
Hospitals	6	64	3
Household	7,733	19,812	---
Industrial Settings	10	40	16
K-12 Schools	25	138	156
Long Term Care Facilities	39	119	---
Offices	6	32	17
Organized Athletics & Camps	27	220	301
Other	2	9	9
Other Food Establishments	3	20	9
Other Healthcare	0	0	0
Other Workplaces	4	17	6
Places of Worship	2	11	0
Recreation/Cultural	4	25	6
Restaurants & Food Courts	16	97	25
Retail & Services	12	59	54
Senior Living	2	6	0
Shelters	0	0	0
Social Gatherings	18	112	51
Travel & Lodging	2	15	13
Total	8,040	21,317	1,086

This map is from <https://www.wcvb.com/article/massachusetts-coronavirus-covid-19-community-spread-risk-map-color-coded/33646711> on 4/9/2021.

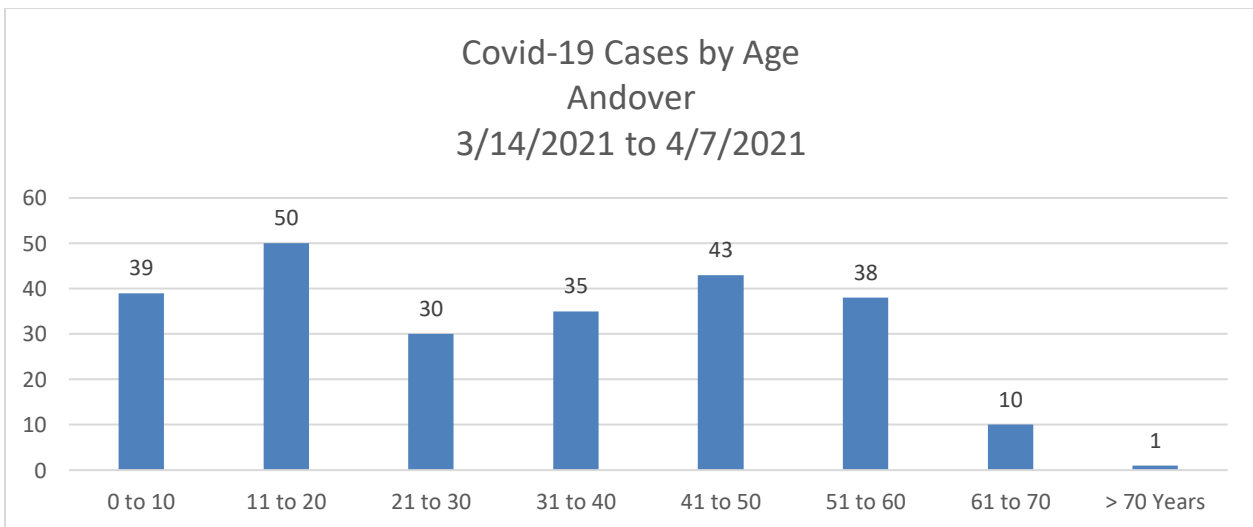
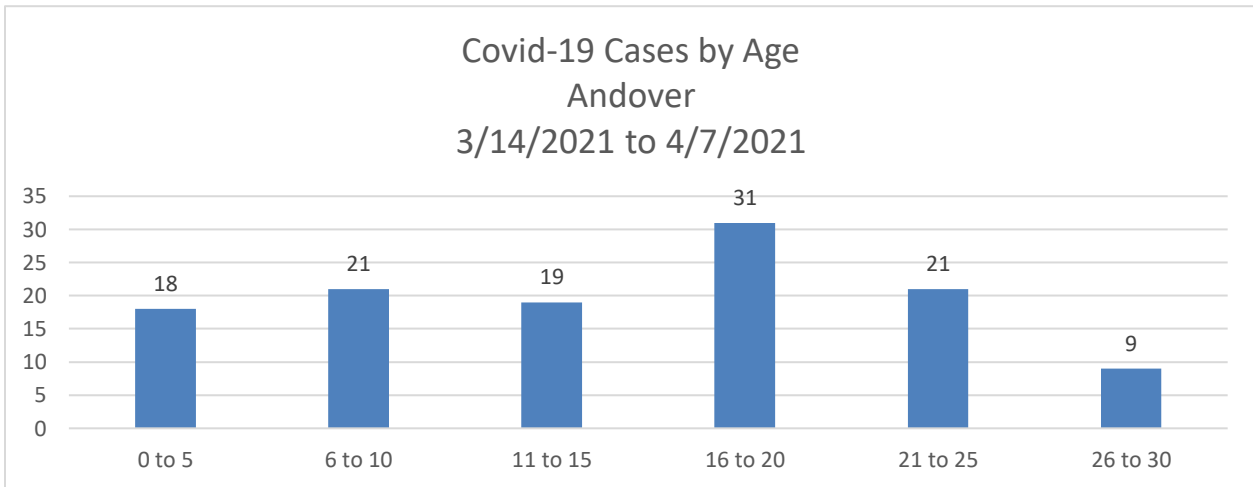
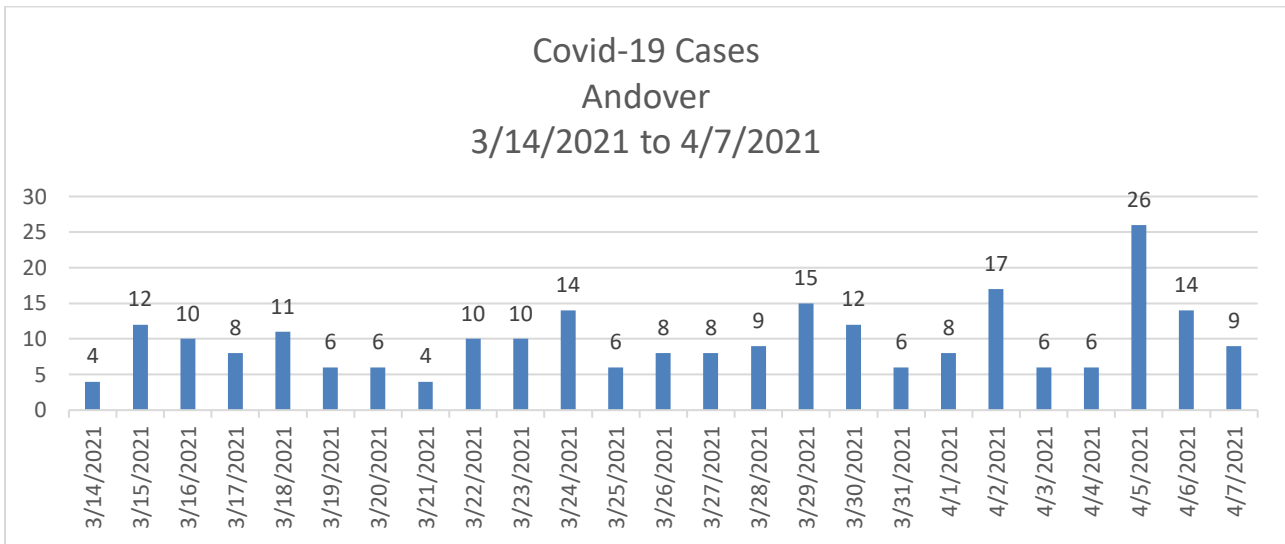


April 8 2021 covid-19 risk map, based on ranking from dph SOURCE: WCVB

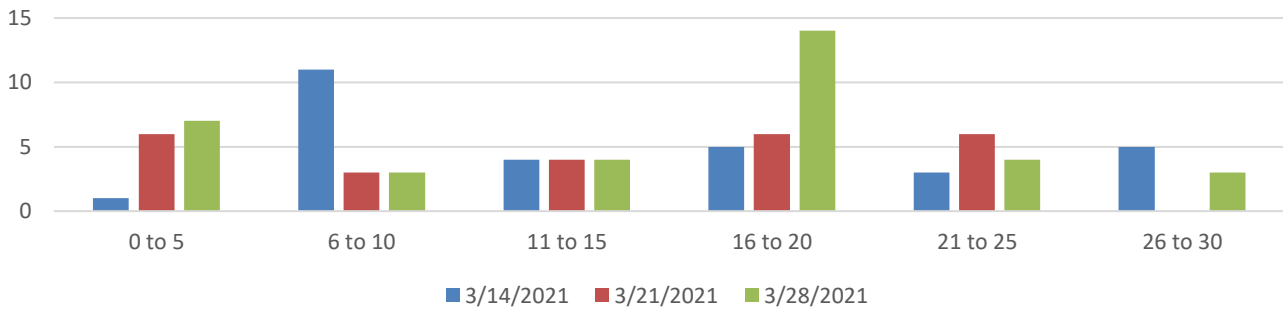
Observations:

- Andover’s 14 day standardized case rate continues to climb; testing rate is staying stagnant while the positivity rate increases.
- State-wide, Childcare clusters continue to be high, and school based spread seems to be increasing slightly.
- Clusters around athletics are increasing.
- Southeastern MA is experiencing a surge in cases, moving many of the communities to the high-risk designation.

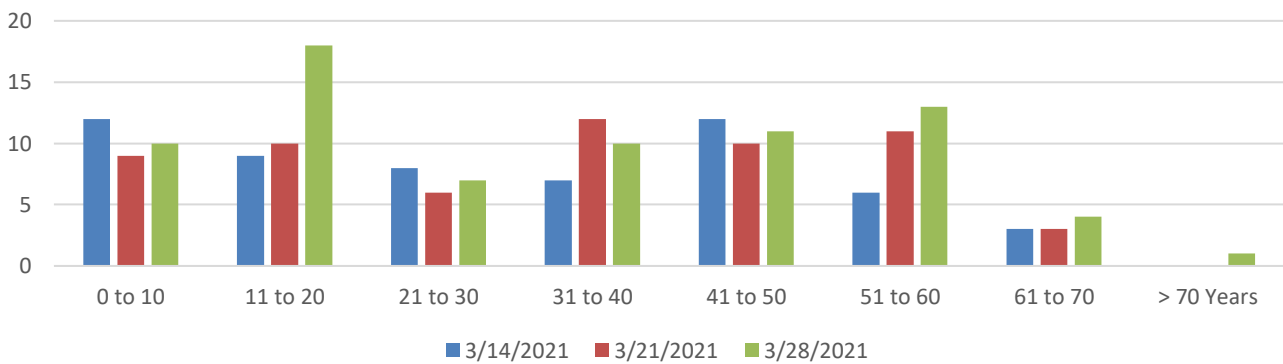
The following data comes from a report run from MAVEN on 4/8/2021, for the period 3/14/2021 to 4/7/2021.



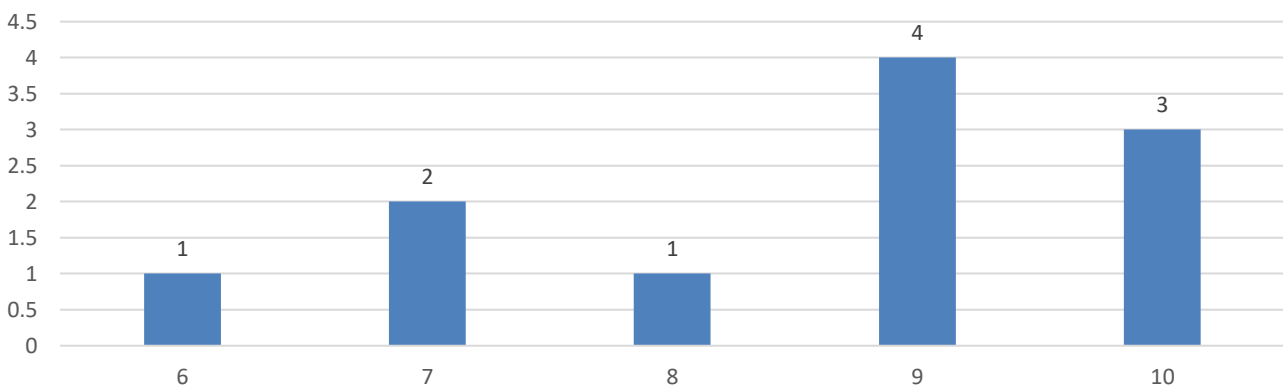
Covid-19 Cases by Age Group
Andover
3/14/2021 to 4/3/2021



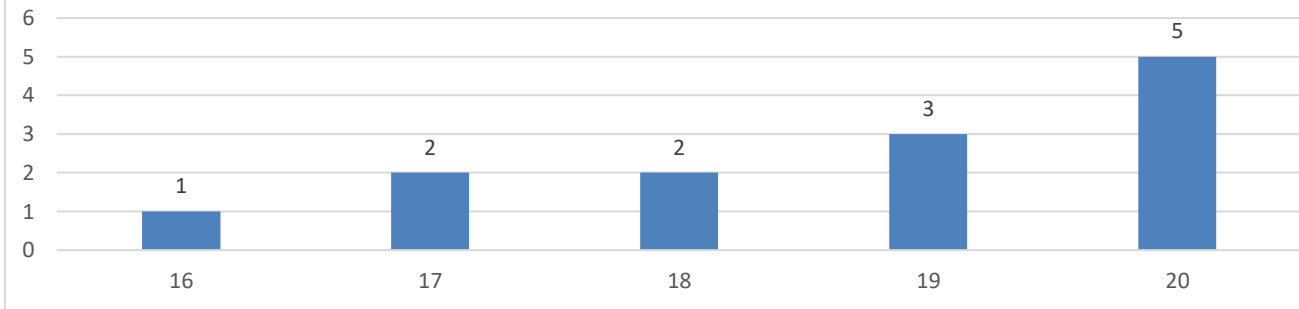
Covid-19 Cases by Age Group
Andover
4/14/2021 to 4/3/2021



Covid-19 Cases by Age (years)
Andover
3/14/2021 to 3/20/2021



Covid-19 Cases by Age (Years)
Andover
3/28/2021 to 4/3/2021



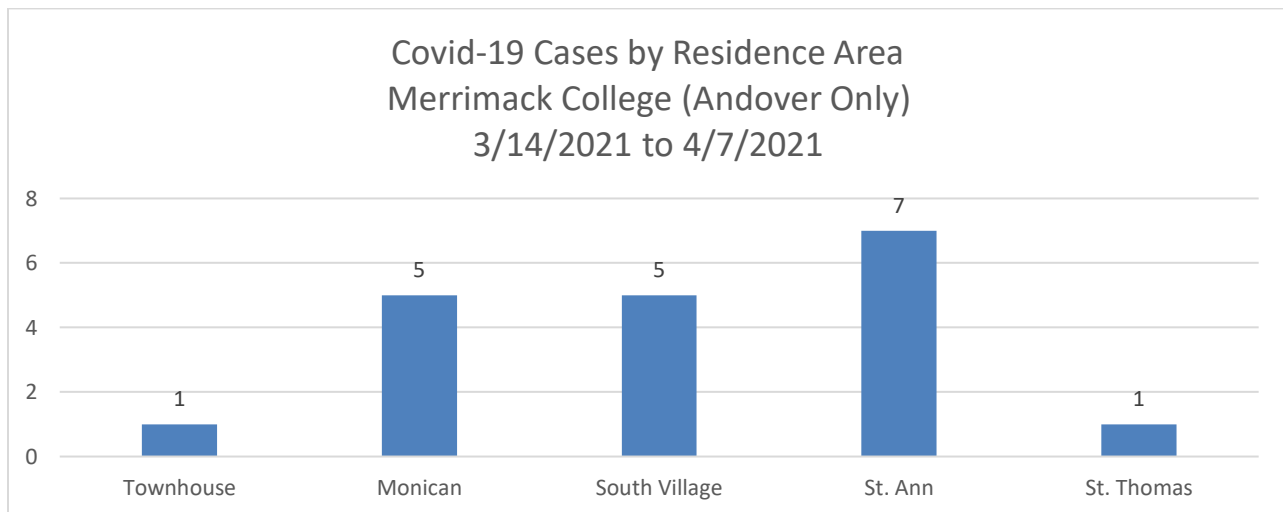
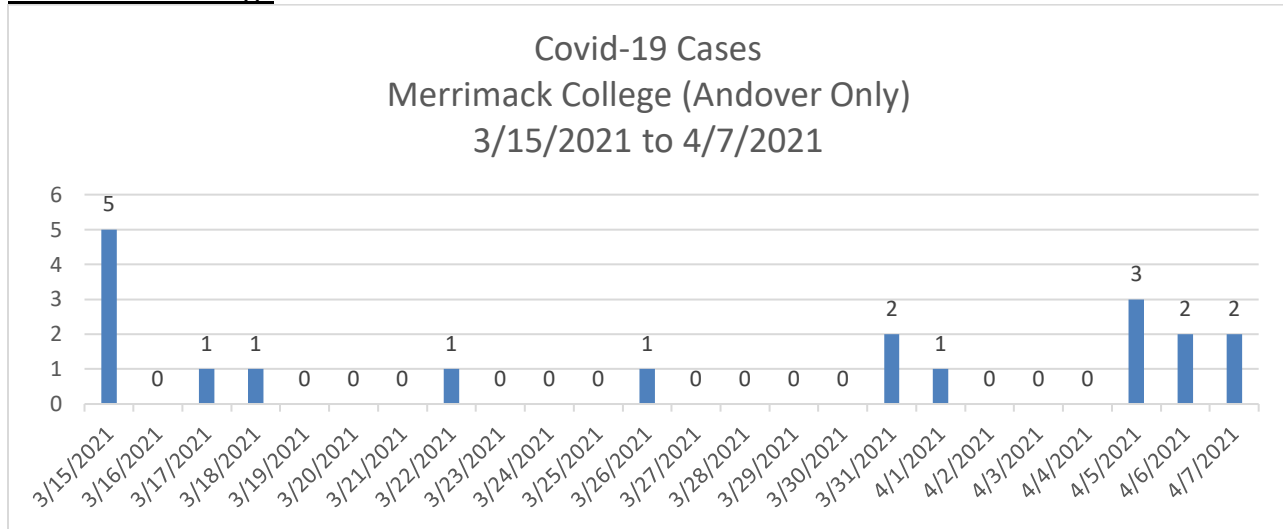
Age Range	3/14/2021	3/21/2021	3/28/2021
0 to 5	1	6	7
6 to 10	11	3	3
11 to 15	4	4	4
16 to 20	5	6	14
21 to 25	3	6	4
26 to 30	5	0	3

Age Range	3/14/2021	3/21/2021	3/28/2021
0 to 10	12	9	10
11 to 20	9	10	18
21 to 30	8	6	7
31 to 40	7	12	10
41 to 50	12	10	11
51 to 60	6	11	13
61 to 70	3	3	4
> 70 Years	0	0	1

Observations:

- There appears to be a spike related to family gatherings around religious holidays; we will likely see continued cases into next week that are connected to easter gatherings.
- In the look back period, the age group of 16 to 20 years seems to be leading in cases.
- The week of March 14th shows a spike of cases in the 6 to 10 year range; in breaking that data out by year, the cases are associated with the ages 9 and 10 years.
- The week of March 28th, the spike occurs in the 16 to 20 year range; 8 of those cases are in ages 19 and 20 years.
- There have been 11 cases in persons over the age of 60 years, showing that the vaccine program is working. We should anticipate that these numbers will drop in the 50 years and older over the next few weeks as vaccine eligibility opens.

Merrimack College



Observations:

- The 7 cases identified on April 5, 6, and 7 are from 4 different residential areas.
- The St. Ann cases are reported from 3/15/21 to 4/5/2021.
- The college will be ending classes the first week of May.