



# TOWN OF ANDOVER

Town Offices  
 36 Bartlet Street  
 Andover, MA 01810  
 (978) 623-8200  
 www.andoverma.gov

## COVID-19 DATA REVIEW March 26, 2021

### Data from Weekly Covid-19 Dashboard 3/25/2021

| Community  | Total Case Count | Case Count (Last 14 Days) | Avg. Daily Incident Rate per 100,000 (last 14 days) | Relative Change in Case Counts | Total Tests | Total Test (last 14 days) | Total Positive Tests (last 14 days) | % Positivity (Last 14 Days) | Change in Percent Positivity |
|------------|------------------|---------------------------|---|--------------------------------|-------------|---------------------------|-------------------------------------|-----------------------------|------------------------------|
| Andover    | 2409             | 110                       | 21.8  | Higher                         | 86062       | 4434                      | 119                                 | 2.68%                       | Higher                       |
| Haverhill  | 7326             | 229                       | 24.8  | Higher                         | 134885      | 6305                      | 270                                 | 4.28%                       | Higher                       |
| Lawrence   | 18367            | 320                       | 26.1  | Higher                         | 198888      | 8229                      | 406                                 | 4.93%                       | Higher                       |
| Lynnfield  | 1106             | 43                        | 26.5  | Lower                          | 28197       | 1739                      | 51                                  | 2.93%                       | No Change                    |
| Methuen    | 6803             | 218                       | 28.9  | Higher                         | 109245      | 5565                      | 251                                 | 4.51%                       | Higher                       |
| N. Andover | 2669             | 103                       | 24.3  | Higher                         | 144098      | 11259                     | 116                                 | 1.03%                       | Higher                       |
| N. Reading | 1264             | 61                        | 26.2  | Higher                         | 33948       | 1939                      | 64                                  | 3.30%                       | Higher                       |
| Reading    | 1894             | 114                       | 29.4  | Higher                         | 53976       | 3208                      | 124                                 | 3.87%                       | Higher                       |
| Tewksbury  | 2947             | 72                        | 16.7  | Higher                         | 73840       | 3985                      | 78                                  | 1.96%                       | Higher                       |
| Wilmington | 1976             | 69                        | 20.1  | Lower                          | 41436       | 2433                      | 74                                  | 3.04%                       | Higher                       |

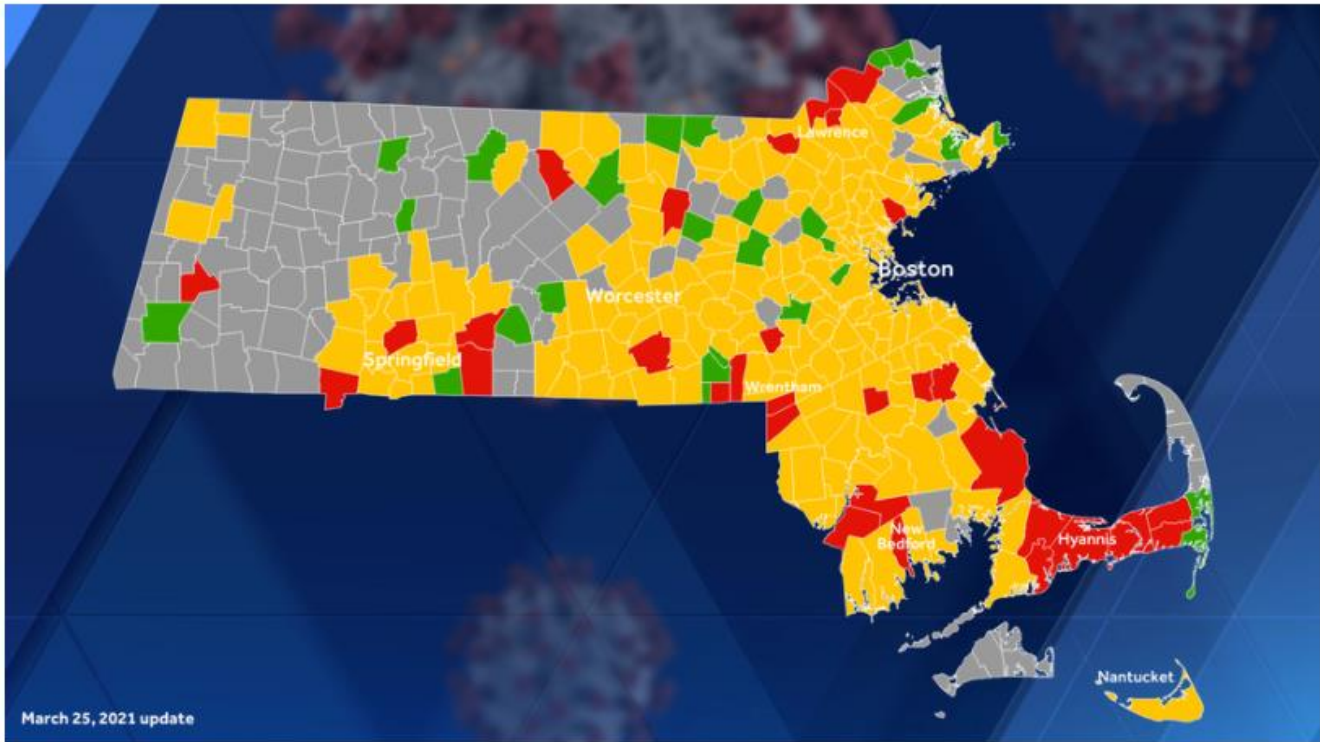
### Andover Weekly Data

| Date               | Total Case Count | Case Count (Last 14 Days) | Avg. Daily Incident Rate per 100,000 (last 14 days) | Relative Change in Case Counts | Total Tests | Total Test (last 14 days) | Total Positive Tests (last 14 days) | % Positivity (Last 14 Days) | Change in Percent Positivity |
|--------------------|------------------|---------------------------|---|--------------------------------|-------------|---------------------------|-------------------------------------|-----------------------------|------------------------------|
| 2/18/2021          | 2176             | 152                       | 30.1  | Lower                          | 73317       | 5577                      | 177                                 | 3.17%                       | Lower                        |
| 2/25/2021          | 2231             | 108                       | 21.4  | Lower                          | 76184       | 5418                      | 132                                 | 2.44%                       | Lower                        |
| 3/4/2021           | 2260             | 90                        | 17.8  | Lower                          | 78884       | 5183                      | 107                                 | 2.06%                       | Lower                        |
| 3/11/2021          | 2298             | 74                        | 14.7  | Lower                          | 81288       | 5191                      | 87                                  | 1.68%                       | Lower                        |
| 3/18/2021          | 2355             | 85                        | 16.8  | Higher                         | 83699       | 4662                      | 95                                  | 2.04%                       | Higher                       |
| 3/25/2021          | 2409             | 110                       | 21.8  | Higher                         | 86062       | 4434                      | 119                                 | 2.68%                       | Higher                       |
| State<br>3/25/2021 | 584024           | 20975                     | 21.5  | Higher                         | 18201030    | 1175822                   | 23589                               | 2.01%                       | Higher                       |

This table contains state-wide data & is intended to provide the reader with background on what type of cluster events are being noted.

| Exposure Setting          | New Clusters             |                 |                |
|---------------------------|--------------------------|-----------------|----------------|
|                           | (Identified 2/21 – 3/20) |                 |                |
|                           | Clusters                 | Confirmed Cases | Close Contacts |
| 24/7 Congregate Settings  | 2                        | 7               | 6              |
| Child Care                | 82                       | 298             | 245            |
| Colleges & Universities   | 28                       | 180             | 91             |
| Corrections               | 0                        | 0               | 0              |
| Hospitals                 | 4                        | 60              | 0              |
| Household                 | 6,278                    | 15,978          | 0              |
| Industrial Settings       | 13                       | 74              | 5              |
| K-12 Schools              | 16                       | 75              | 92             |
| Long Term Care Facilities | 32                       | 85              | 0              |
| Offices                   | 5                        | 19              | 4              |
| Organized Athletics/Camps | 21                       | 157             | 190            |
| Other                     | 0                        | 0               | 0              |
| Other Food Establishments | 3                        | 11              | 0              |
| Other Healthcare          | 1                        | 3               | 0              |
| Other Workplaces          | 5                        | 19              | 0              |
| Places of Worship         | 6                        | 72              | 1              |
| Recreation/Cultural       | 5                        | 21              | 69             |
| Restaurants & Food Courts | 16                       | 100             | 26             |
| Retail & Services         | 10                       | 40              | 10             |
| Senior Living             | 4                        | 16              | 0              |
| Shelters                  | 0                        | 0               | 0              |
| Social Gatherings         | 17                       | 105             | 67             |
| Travel & Lodging          | 0                        | 0               | 0              |
| <b>TOTAL</b>              | <b>6,548</b>             | <b>17,320</b>   | <b>806</b>     |

This map is from <https://www.wcvb.com/article/massachusetts-coronavirus-covid-19-community-spread-risk-map-color-coded/33646711> on 3/26/2021.

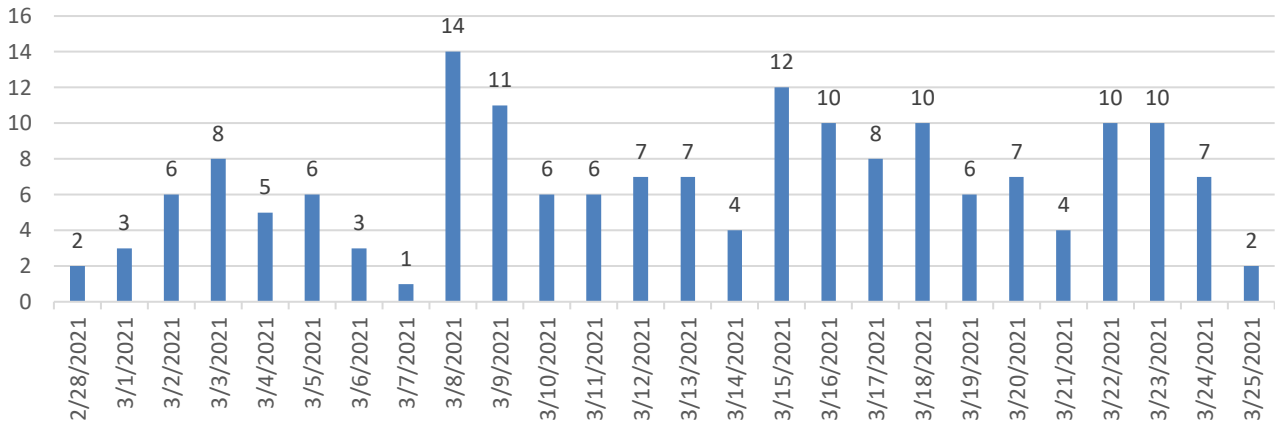


covid-19 risk map, march 25, 2021 SOURCE: WCVB

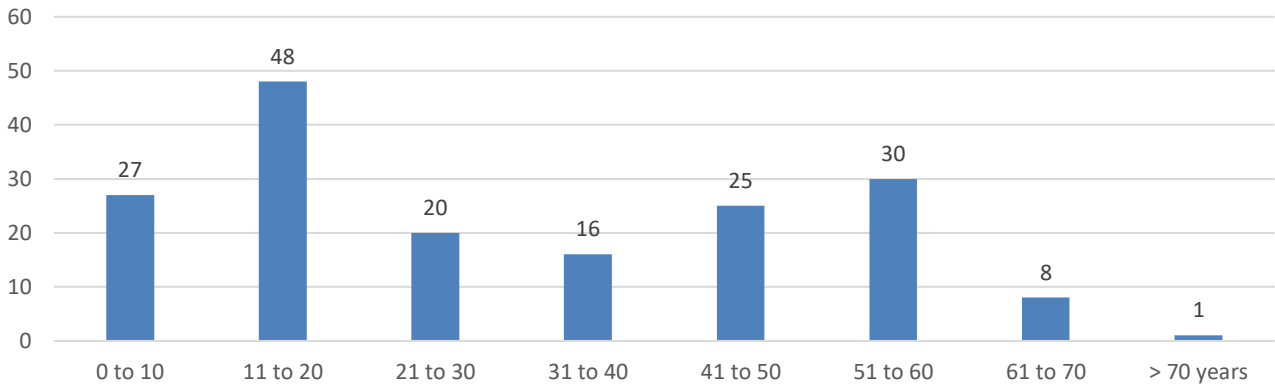
**Observations:**

- Standardized Daily Incident Rates have increased in most communities and the state.
- This is the second week in a row that Andover’s Standardized Incident Rate has increased.
- Haverhill and Methuen were able to be out of the high risk category for one single week.
- The number of high risk communities increased this week.
- Childcare clusters continue to be high, and will likely remain high until vaccine can be provided to that age group.
- Organized athletics continue to be a source of clusters; MDPH reports that hockey continues to be a sport with high transmission rates, and upticks are being seen in baseball, football, soccer, and lacrosse.

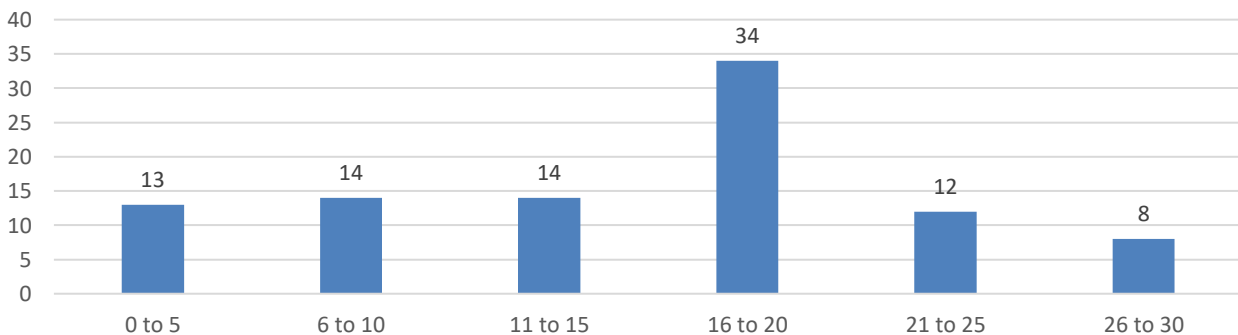
### Covid-19 Cases Andover 2/28/2021 to 3/25/2021



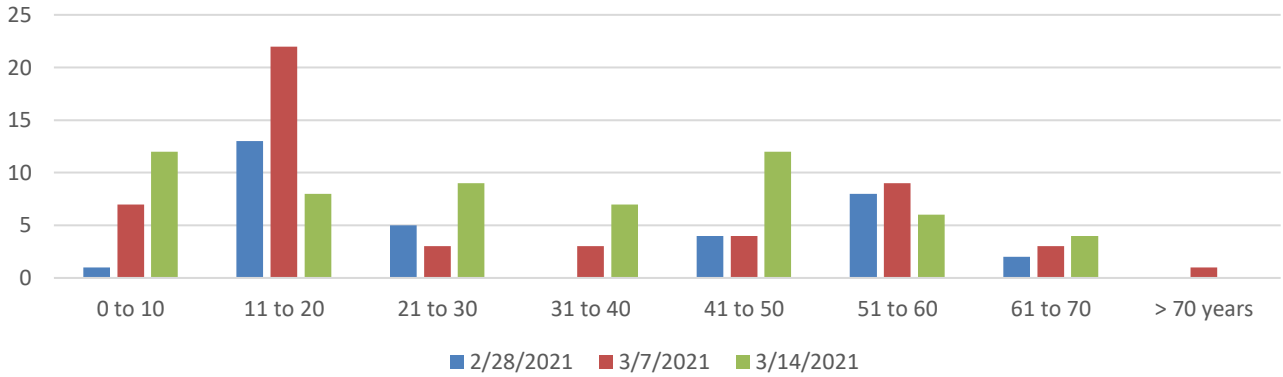
### Covid-19 Cases by Age Andover 2/28/2021 to 3/25/2021



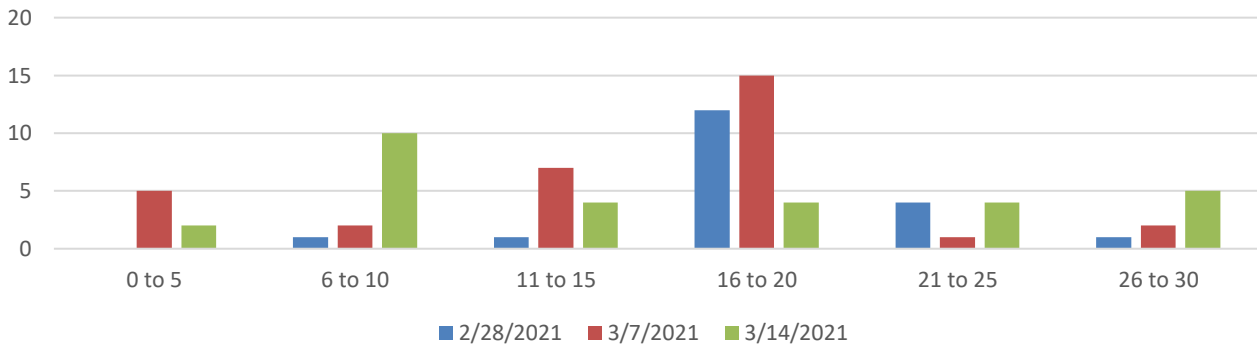
### Covid-19 Cases by Age Andover 2/28/2021 to 3/25/2021



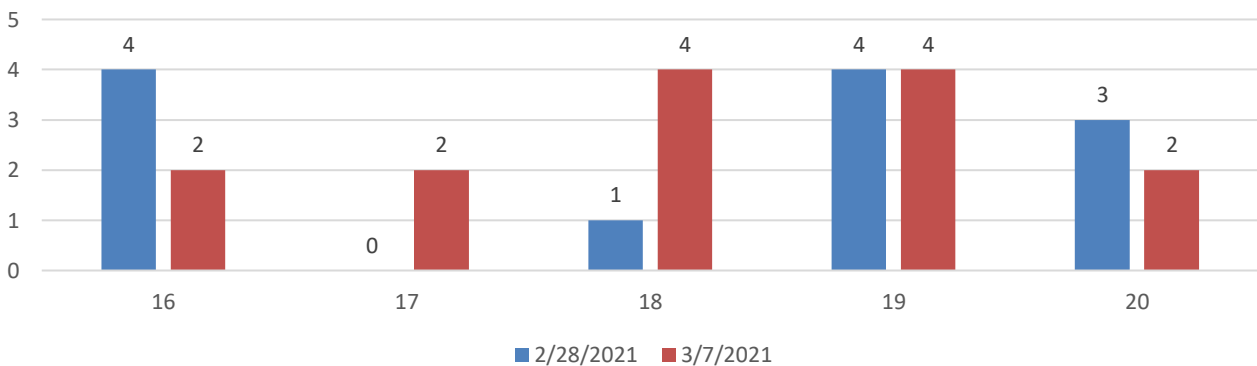
Covid-19 Cases by Age  
Andover  
2/28/2021 to 3/20/2021



Covid-19 Cases by Age  
Andover  
2/28/2021 to 3/20/2021



Covid-19 Cases by Age (Years)  
Andover  
2/28/2021 to 3/13/2021



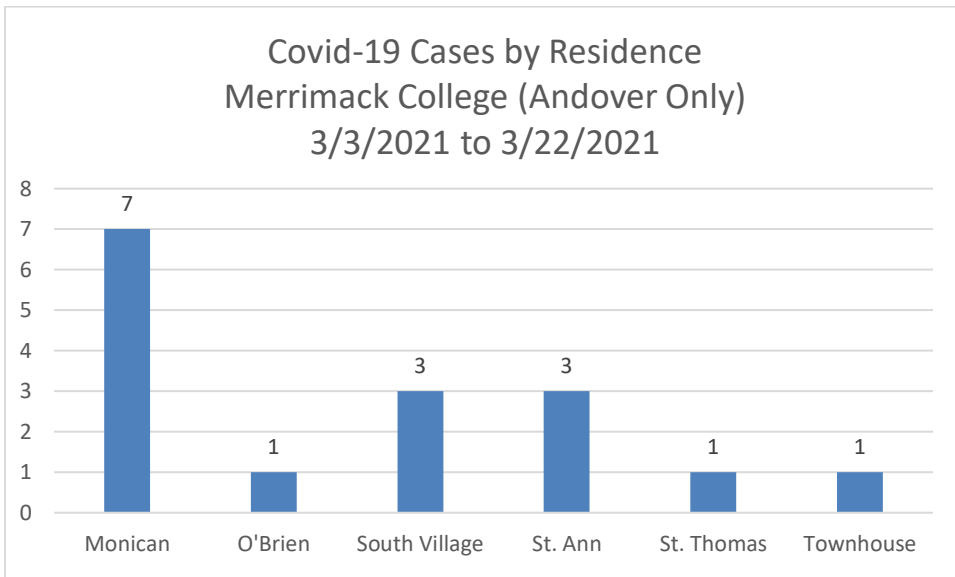
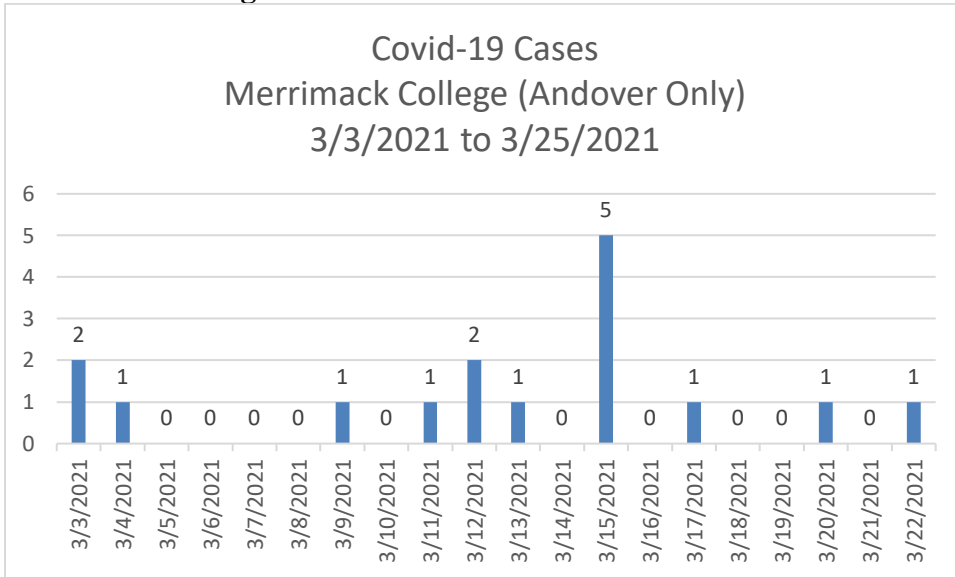
| Age      | 2/28/2021 | 3/7/2021 | 3/14/2021 |
|----------|-----------|----------|-----------|
| 0 to 5   | 0         | 5        | 2         |
| 6 to 10  | 1         | 2        | 10        |
| 11 to 15 | 1         | 7        | 4         |
| 16 to 20 | 12        | 15       | 4         |
| 21 to 25 | 4         | 1        | 4         |
| 26 to 30 | 1         | 2        | 5         |

| Age           | 2/28/2021 | 3/7/2021 | 3/14/2021 |
|---------------|-----------|----------|-----------|
| 0 to 10       | 1         | 7        | 12        |
| 11 to 20      | 13        | 22       | 8         |
| 21 to 30      | 5         | 3        | 9         |
| 31 to 40      | 0         | 3        | 7         |
| 41 to 50      | 4         | 4        | 12        |
| 51 to 60      | 8         | 9        | 6         |
| 61 to 70      | 2         | 3        | 4         |
| > 70<br>years | 0         | 1        | 0         |

**Observations:**

- The data indicates that there is an increase in positive cases through the weeks of March 7<sup>th</sup> and 14<sup>th</sup>.
- During the reporting period, we again see higher case numbers in teens and persons aged 51 to 60.
- Case numbers in the age group 16 to 20 are double of the other cases in this reporting period.
- Cases in the age group 16 to 20 appear to be high.
- Cases in age group 0 to 10 years have increased each of the last two weeks, as have ages 41 to 50 years.

**Merrimack College**



**Observations:**

- There was a definite spike in Monican Hall cases.
- The cases reported on 3/15/2021 come from 5 different dorm rooms in three different dorms and range in age from 18 to 22 years old.
- Andover continues to participate in a weekly call among Merrimack College, North Andover, and Andover nurses.